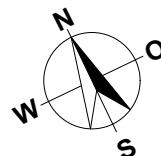
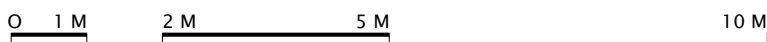


WHG 7	WHG 8
WHG 4	WHG 5
WHG 1	WHG 2
UG Links	UG Rechts

MEHRFAMILIENHAUS
BOESINGENSTRASSE
3177 LAUPEN
4.5 ZIMMER

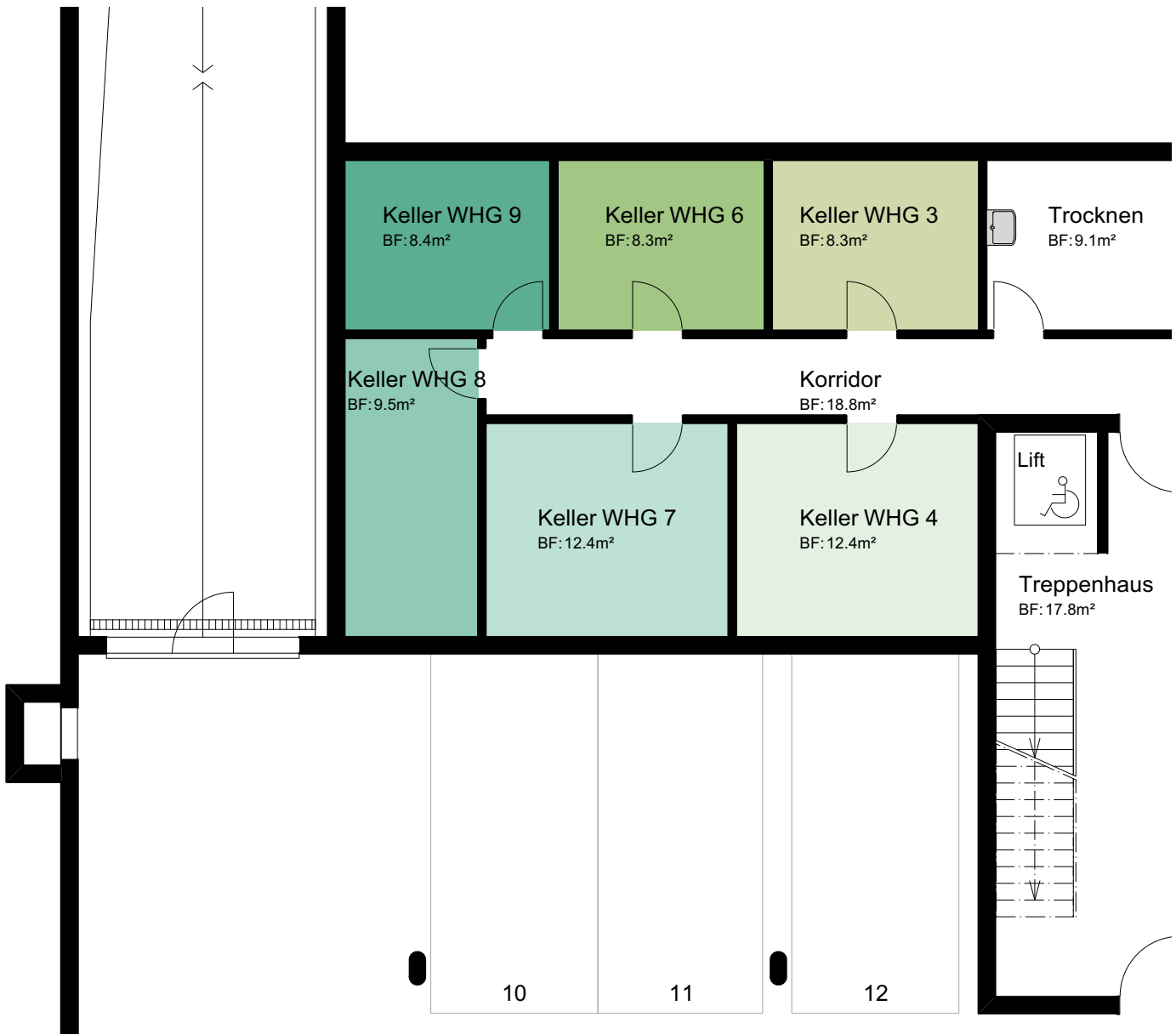
WOHNUNG: WHG 7, 2. OG
 KELLER: 12.0 m²
 SITZPLATZ: 15.0 m²
 NETTOWOHNFLÄCHE: 106.0 m²



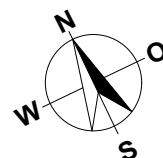
MASSTAB 1:100

MEHRFAMILIENHAUS
BOESINGENSTRASSE
3177 LAUPEN

UNTERGESCHOSS LINKS



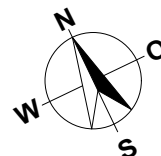
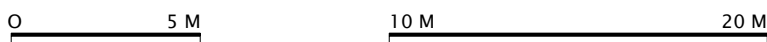
0 1 M 2 M 5 M 10 M

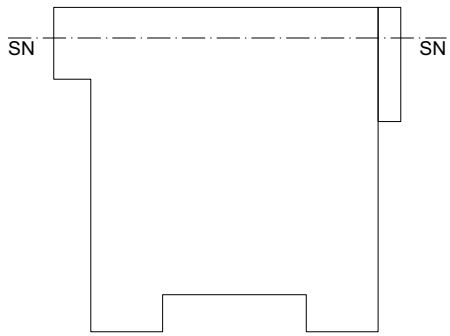


MASSTAB 1:100

MEHRFAMILIENHAUS
BOESINGENSTRASSE
3177 LAUPEN

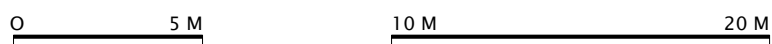
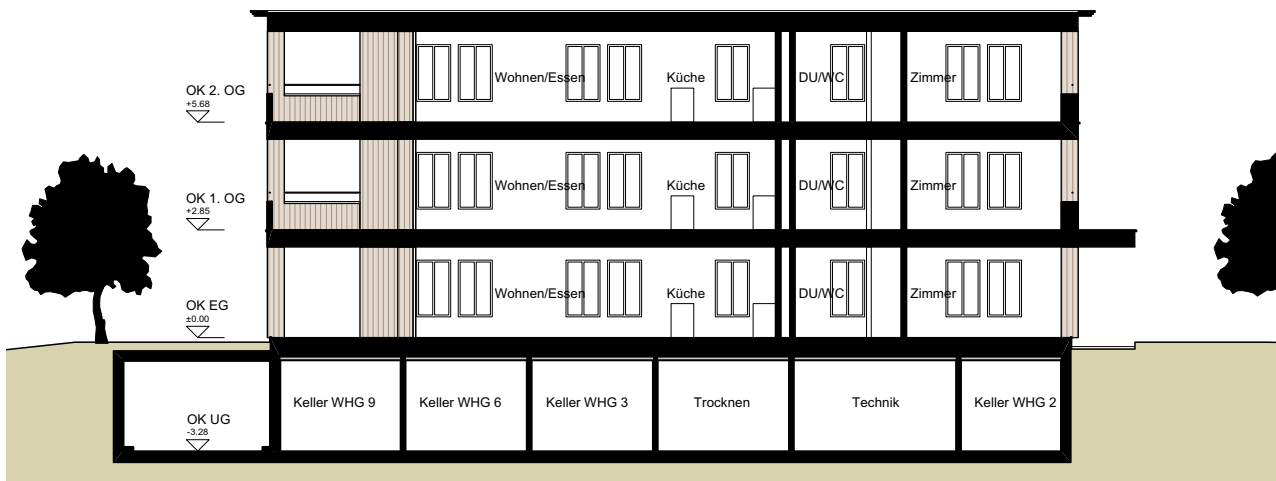
EINSTELLHALLE / KELLER



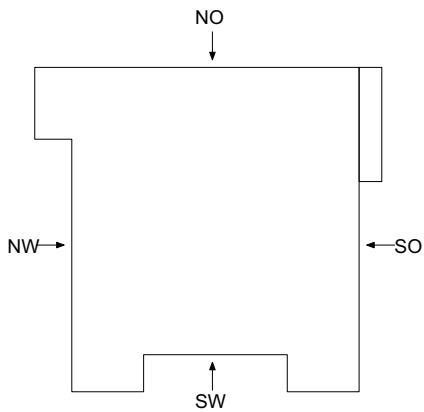


MEHRFAMILIENHAUS
BOESINGENSTRASSE
3177 LAUPEN

SCHNITT



MASSSTAB 1:200



MEHRFAMILIENHAUS
BOESINGENSTRASSE
3177 LAUPEN

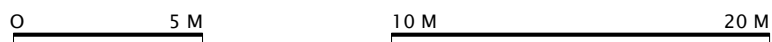
FASSADEN



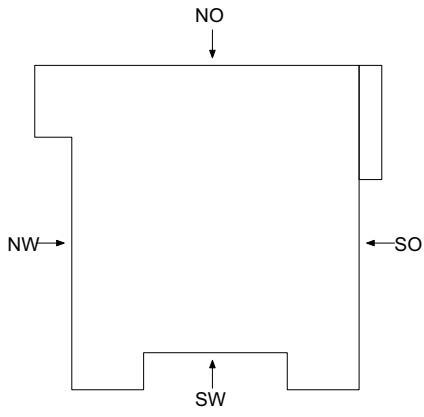
Nordwestfassade



Südwestfassade

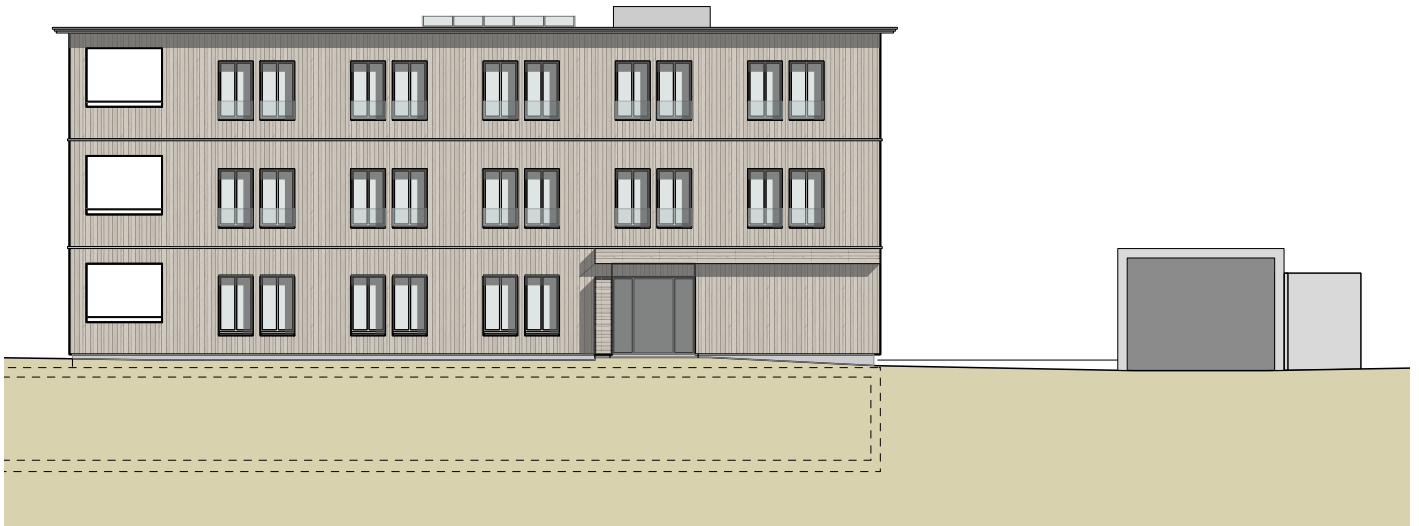


MASSTAB 1:200



MEHRFAMILIENHAUS
BOESINGENSTRASSE
3177 LAUPEN

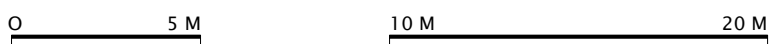
FASSADEN



Südostfassade



Nordostfassade



MASSTAB 1:200