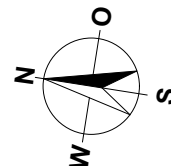
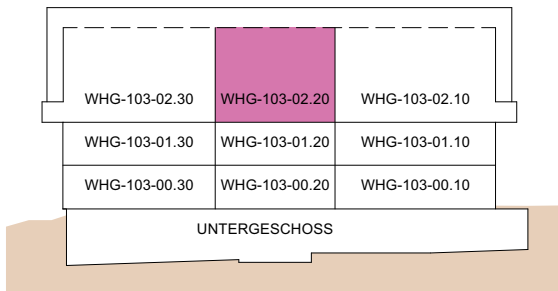


**MEHRFAMILIENHAUS
ZILMATTSTRASSE 103
3255 RAPPERSWIL (BE)
2.5 ZIMMER**

WOHNUNG: WHG-103-02.20, DG
 KELLER: 11.5 m²
 LOGGIA: 7.0 m²
 NETTOWOHNFLÄCHE DG: 51.0 m²
 NETTOWOHNFLÄCHE GALERIE: 10.0 m²
 NETTOWOHNFLÄCHE TOTAL: 61.0 m²

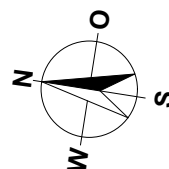
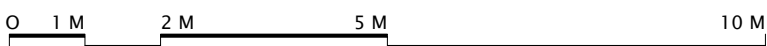
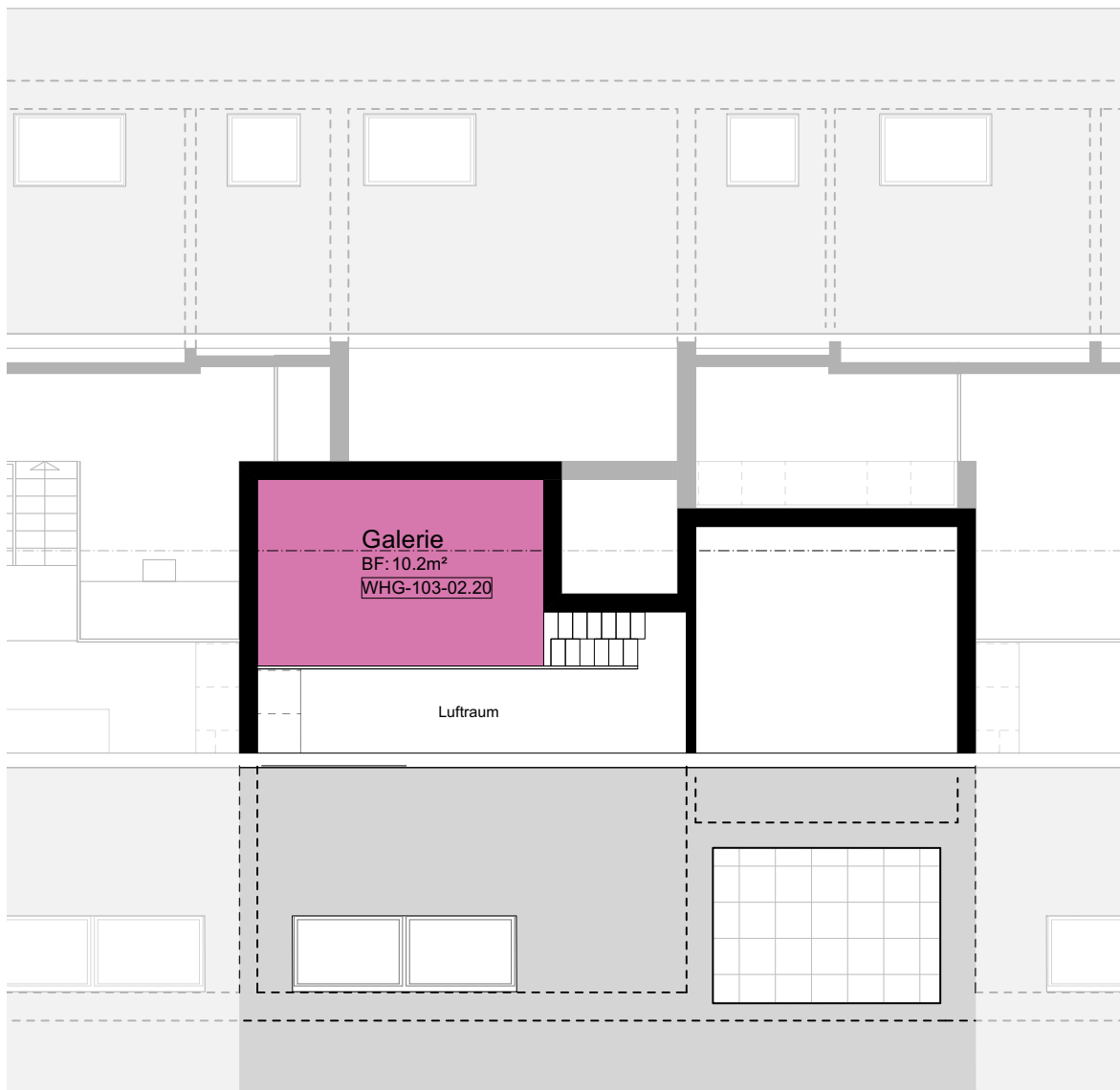


MASSTAB 1:100

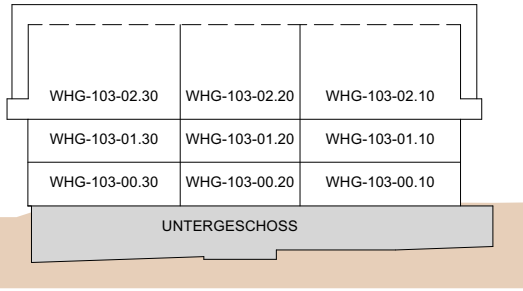


MEHRFAMILIENHAUS
 ZILMATTSTRASSE 103
 3255 RAPPERSWIL (BE)
 2.5 ZIMMER

WOHNUNG:	WHG-103-02.20, Galerie
KELLER:	11.5 m ²
LOGGIA:	7.0 m ²
NETTOWOHNFLÄCHE DG:	51.0 m ²
NETTOWOHNFLÄCHE GALERIE:	10.0 m ²
NETTOWOHNFLÄCHE TOTAL:	61.0 m ²

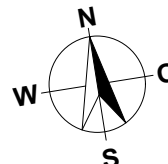


MASSTAB 1:100



MEHRFAMILIENHAUS
ZILMATTSTRASSE 103
3255 RAPPERSWIL (BE)

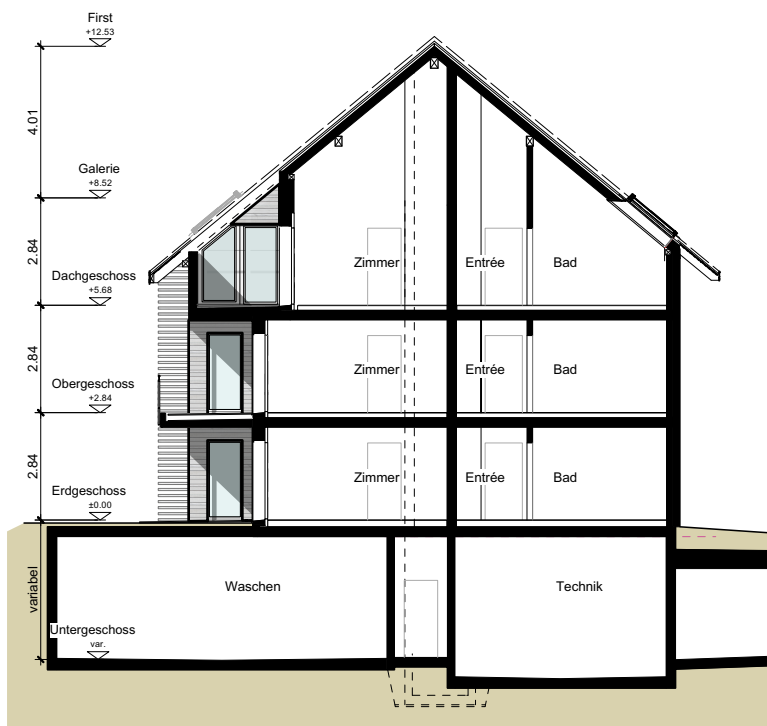
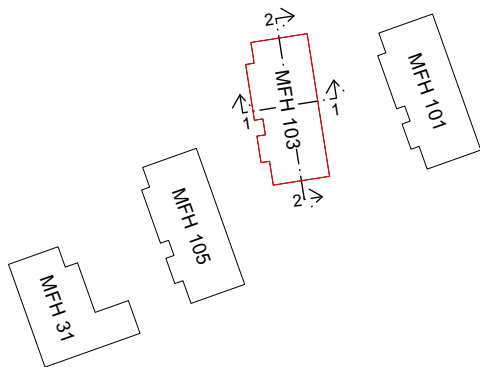
HAUS 103
UNTERGESCHOSS



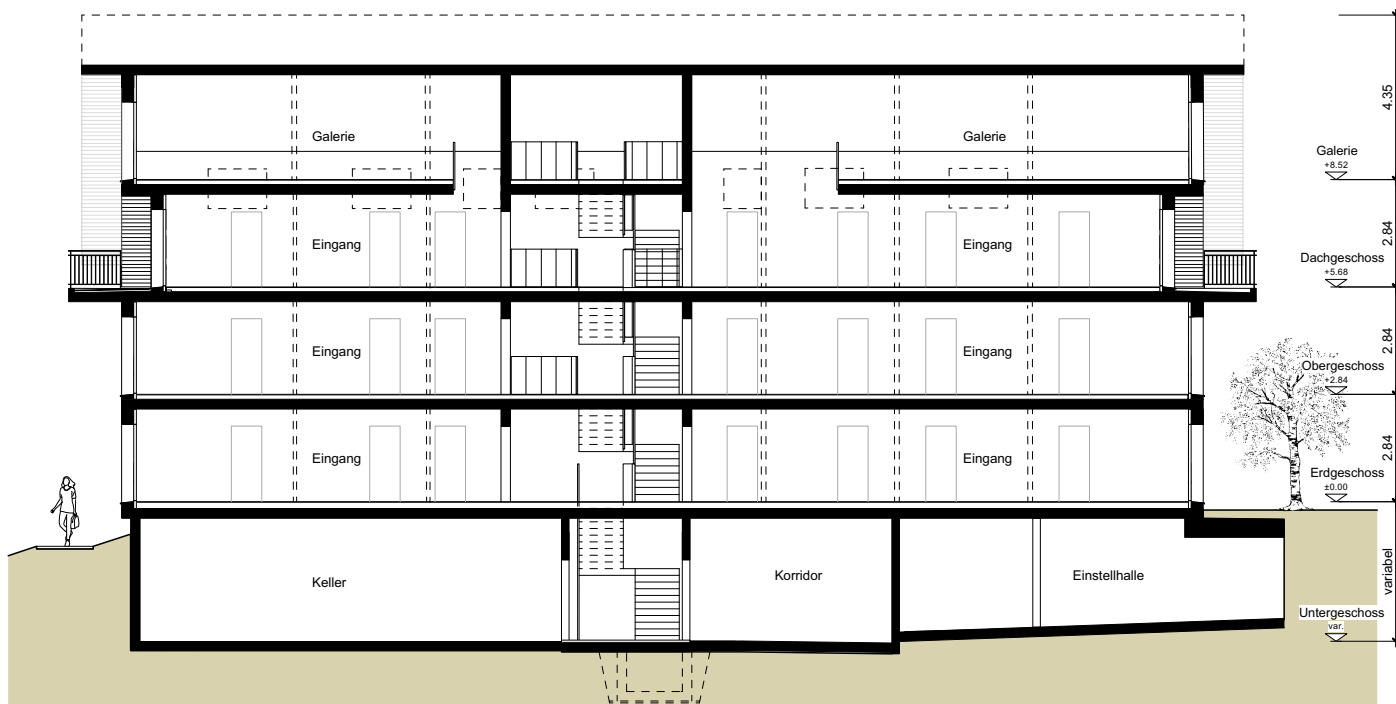
MASSTAB 1:150

MEHRFAMILIENHAUS
ZILMATTSTRASSE 103
3255 RAPPERSWIL (BE)

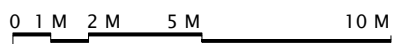
HAUS 103
SCHNITTE



SCHNITT 1-1



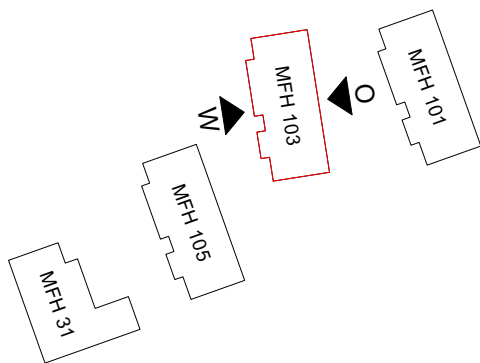
SCHNITT 2-2



MASSTAB 1:200

MEHRFAMILIENHAUS
ZILMATTSTRASSE 103
3255 RAPPERSWIL (BE)

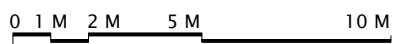
HAUS 103
FASSADEN



OSTEN



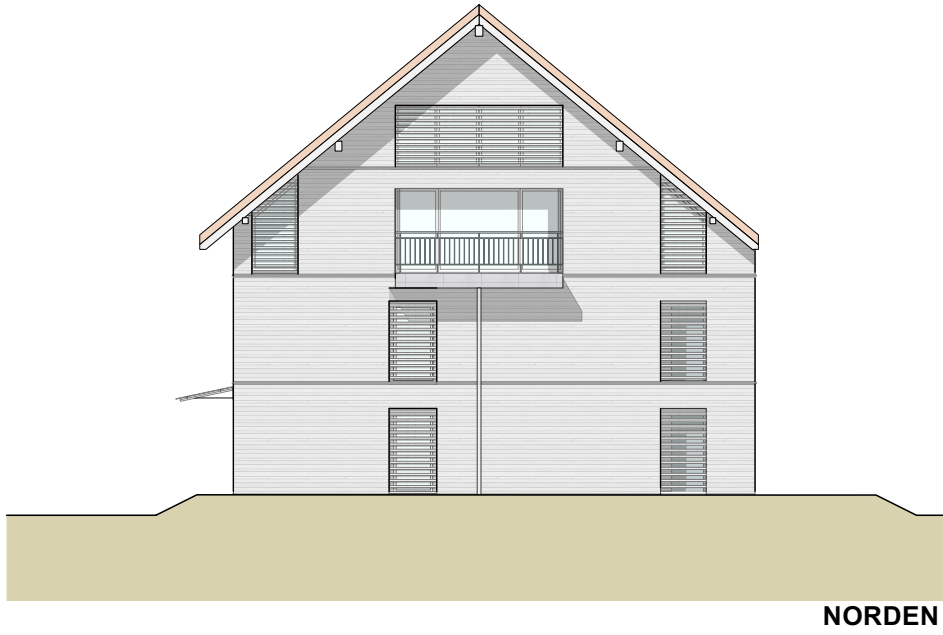
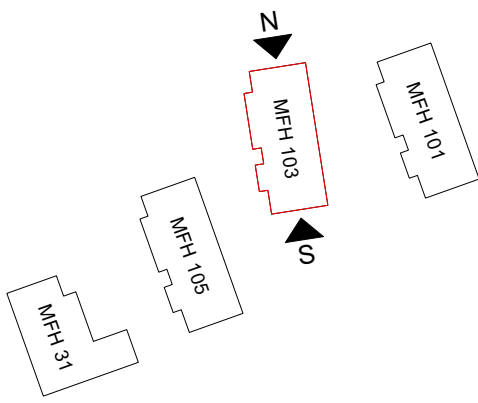
WESTEN



MASSTAB 1:200

MEHRFAMILIENHAUS
ZILMATTSTRASSE 103
3255 RAPPERSWIL (BE)

HAUS 103
FASSADEN

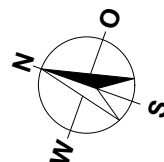
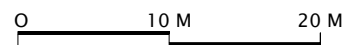


0 1 M 2 M 5 M 10 M

MASSTAB 1:200

MEHRFAMILIENHÄUSER
HAUPTSTRASSE 31
ZILMATTSTRASSE 101, 103 UND 105
3255 RAPPERSWIL (BE)

SITUATION / UNTERGESCHOSS / ESTH



MASSTAB 1:500