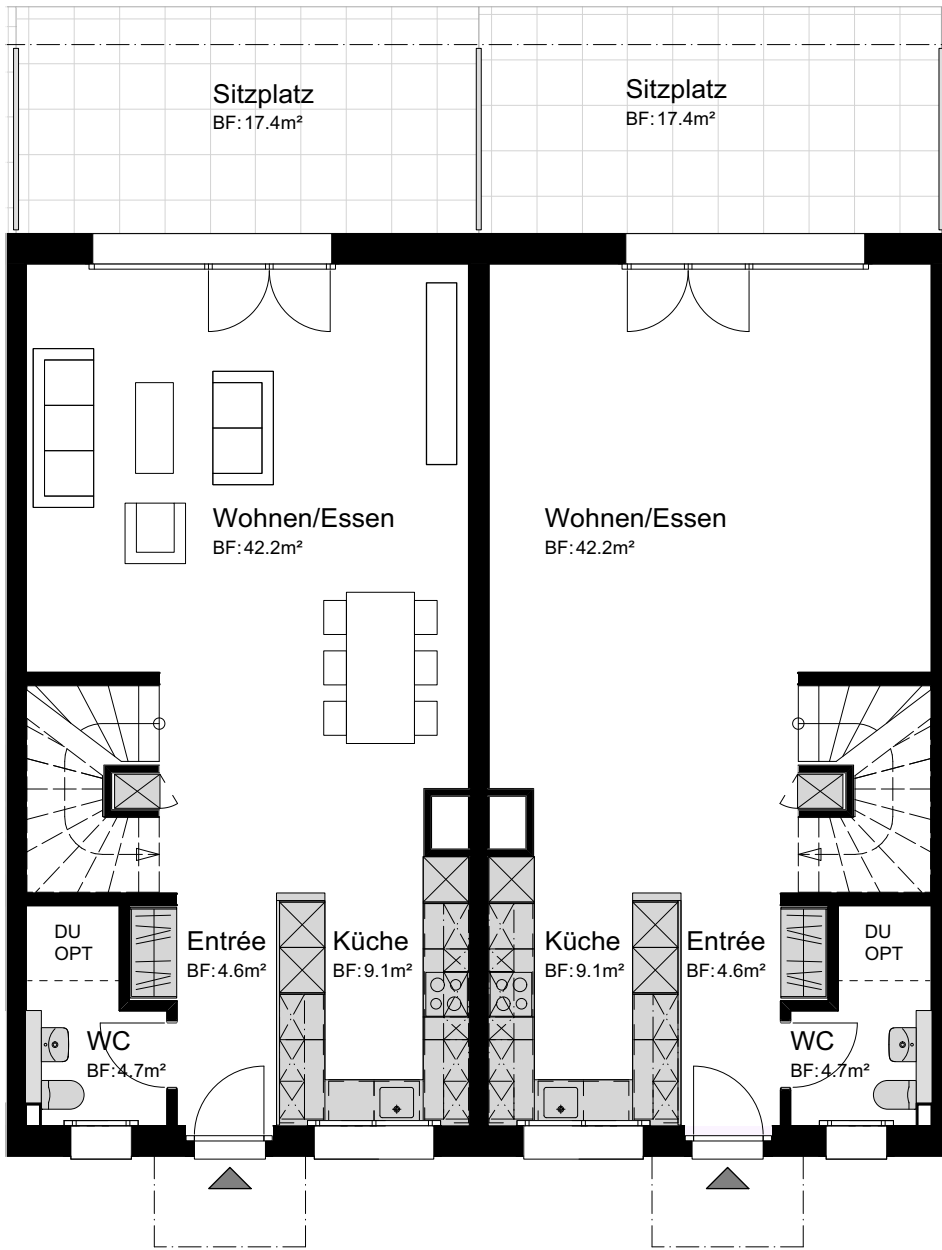
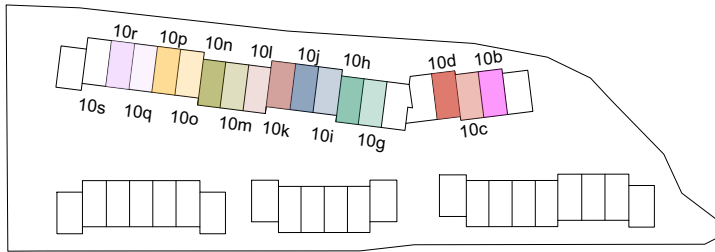


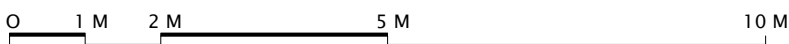
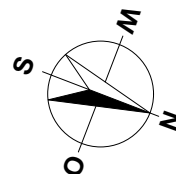
ÜBERBAUUNG
WANNERSMATT
3250 LYSS

ERDGESCHOSS
REFH 10b bis 10d
REFH 10g bis 10s
Typ B



REFH 10r	REFH 10i
REFH 10p	REFH 10g
REFH 10m	REFH 10d
REFH 10k	REFH 10b

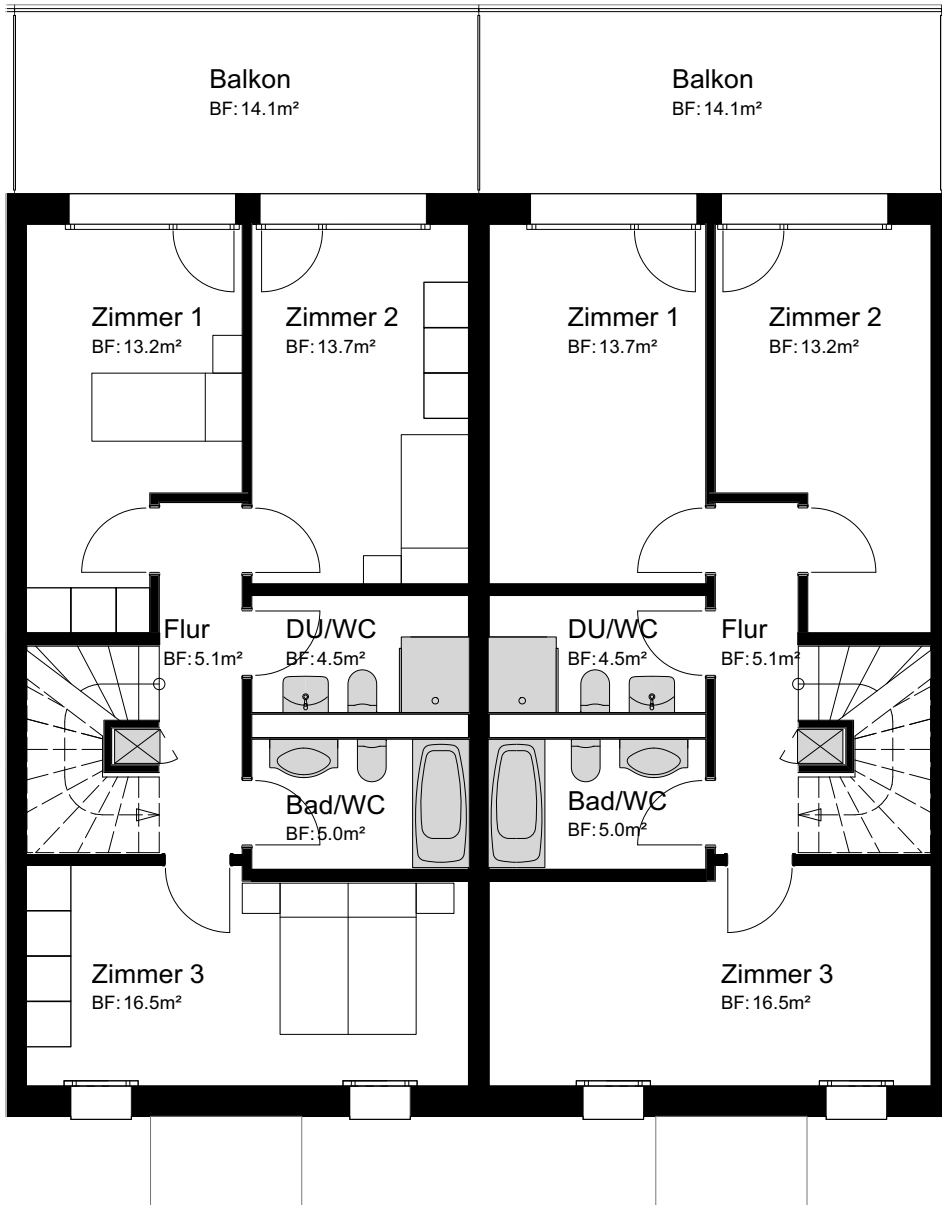
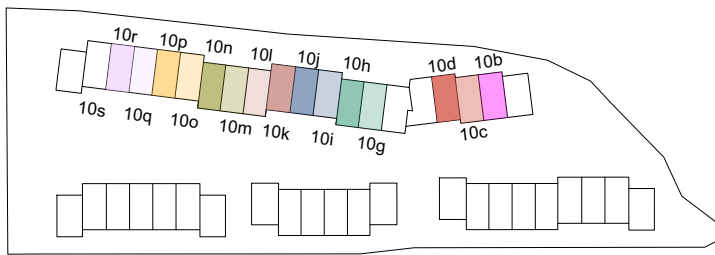
REFH 10q	REFH 10l
REFH 10s	REFH 10j
REFH 10o	REFH 10h
REFH 10n	REFH 10c



MASSSTAB 1:100

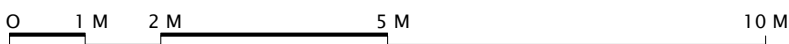
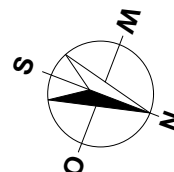
ÜBERBAUUNG
WANNERSMATT
3250 LYSS

OBERGESCHOSS
REFH 10b bis 10d
REFH 10g bis 10s
Typ B



REFH 10r	REFH 10i
REFH 10p	REFH 10g
REFH 10m	REFH 10d
REFH 10k	REFH 10b

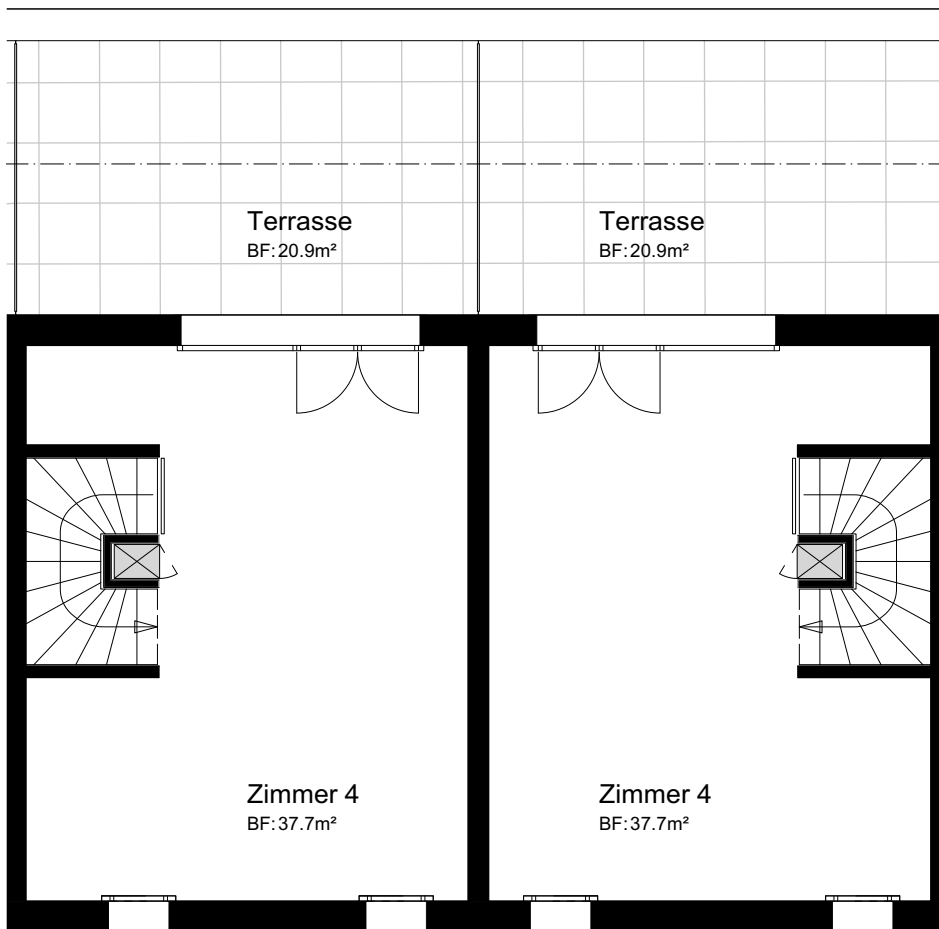
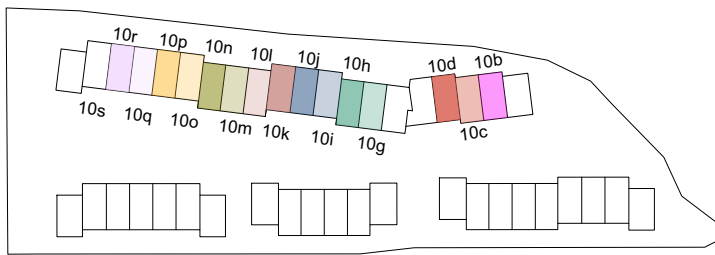
REFH 10q	REFH 10l
REFH 10s	REFH 10j
REFH 10o	REFH 10h
REFH 10n	REFH 10c



MASSSTAB 1:100

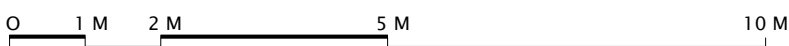
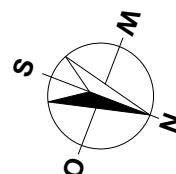
ÜBERBAUUNG
WANNERSMATT
3250 LYSS

ATTIKAGESCHOSS
REFH 10b bis 10d
REFH 10g bis 10s
Typ B



REFH 10r	REFH 10i
REFH 10p	REFH 10g
REFH 10m	REFH 10d
REFH 10k	REFH 10b

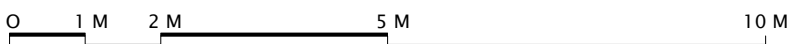
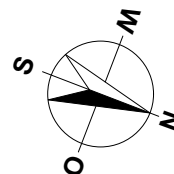
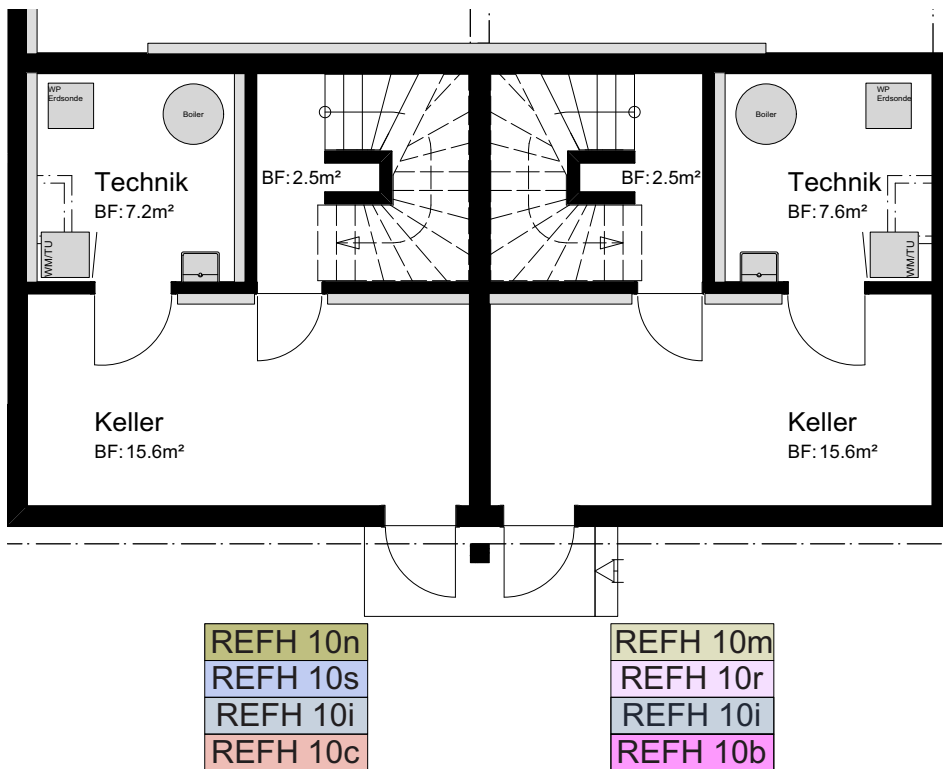
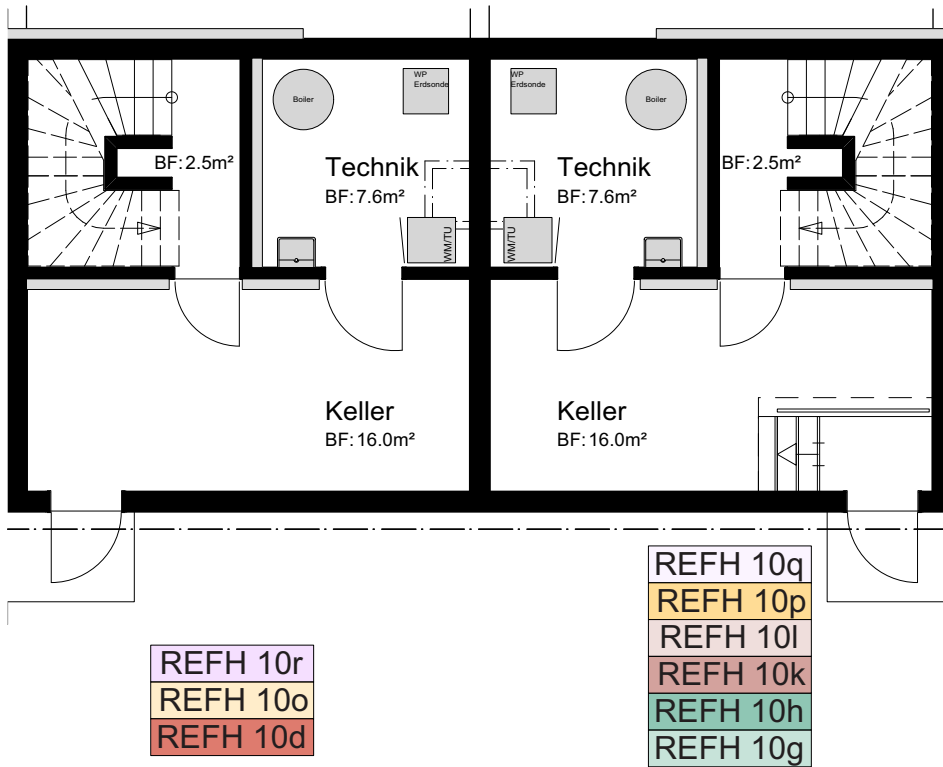
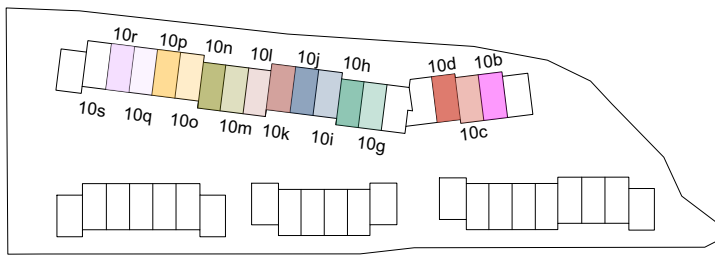
REFH 10q	REFH 10l
REFH 10s	REFH 10j
REFH 10o	REFH 10h
REFH 10n	REFH 10c



MASSSTAB 1:100

ÜBERBAUUNG
WANNERSMATT
3250 LYSS

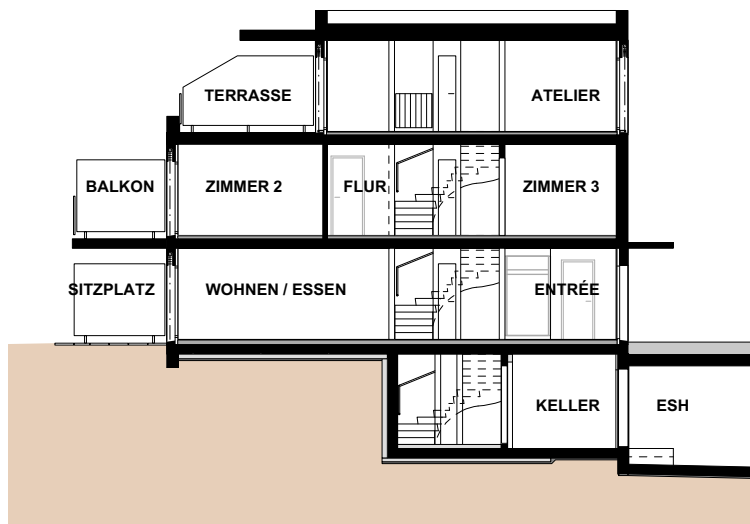
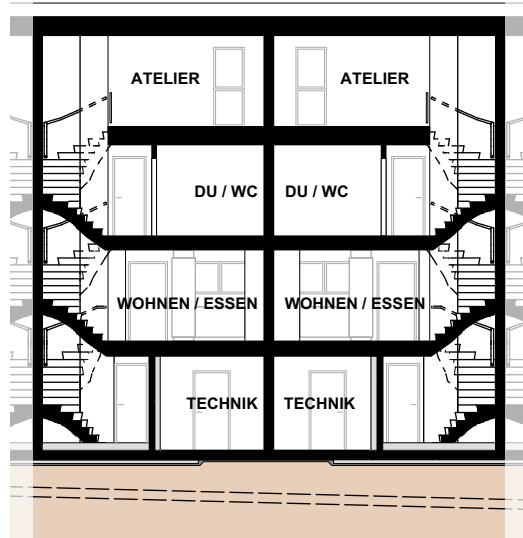
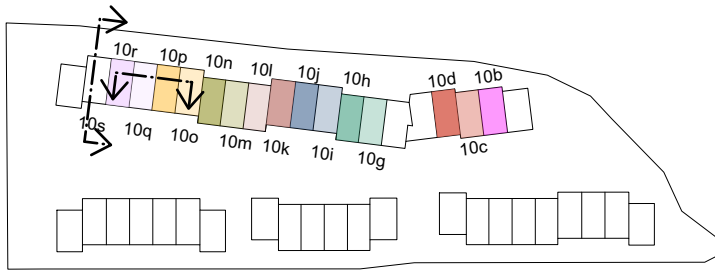
UNTERGESCHOSS
REFH 10b bis 10d
REFH 10g bis 10s
Typ B



MASSSTAB 1:100

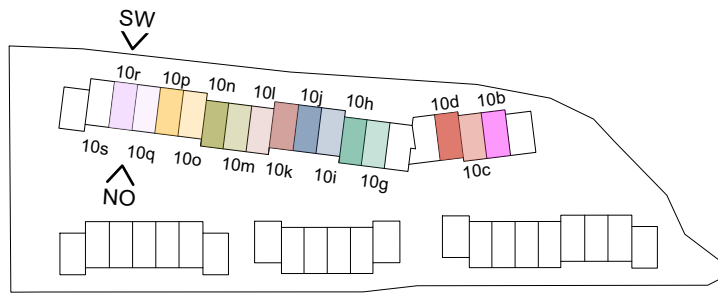
ÜBERBAUUNG
WANNERSMATT
3250 LYSS

SCHEMASCHNITTE
REFH 10b bis 10d
REFH 10g bis 10s
Typ B



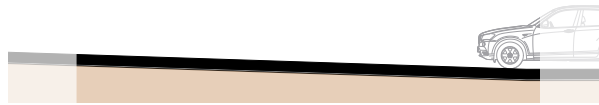
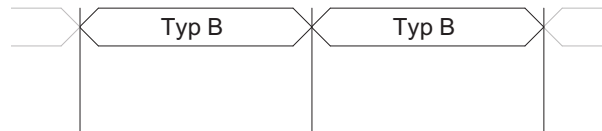
0 1 M 2 M 5 M 10 M

MASSSTAB 1:200

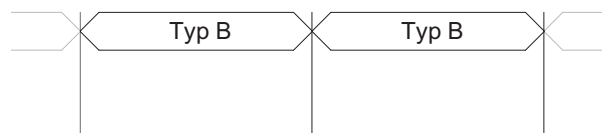


**ÜBERBAUUNG
WANNERSMATT
3250 LYSS**

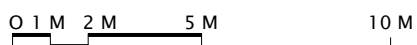
Fassaden
REFH 10b bis 10d
REFH 10g bis 10s
Typ B



NORDOST



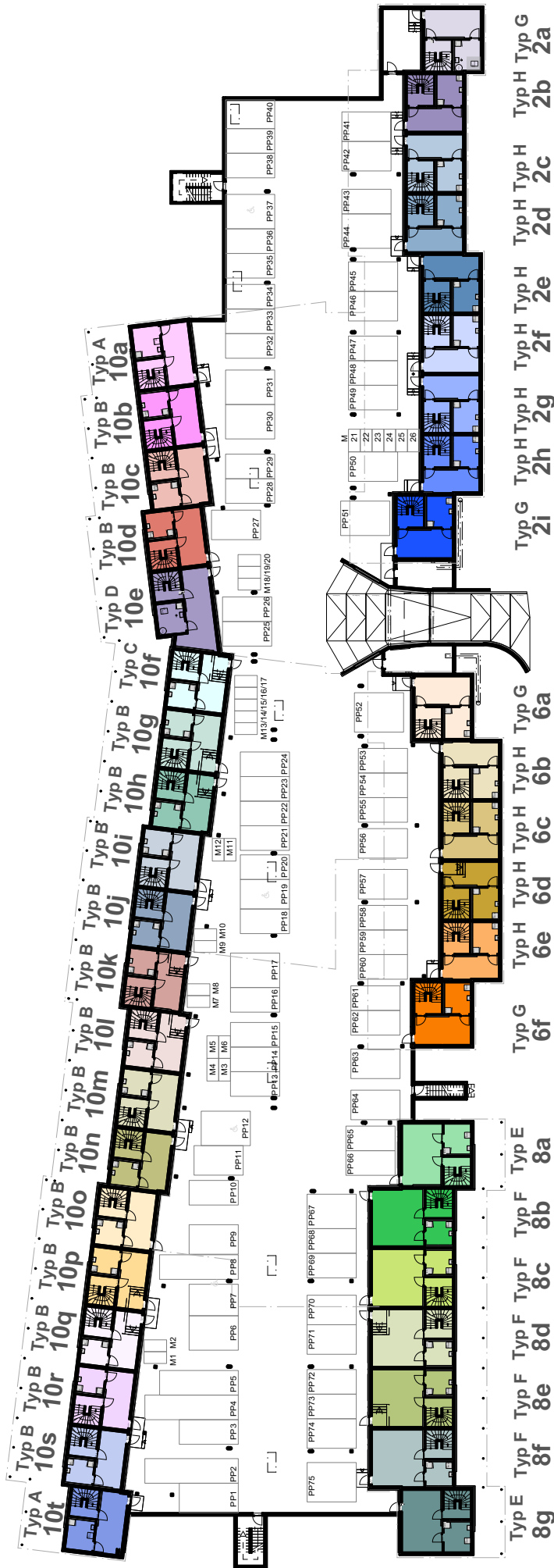
SÜDWEST



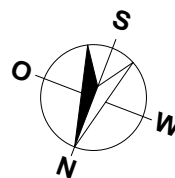
MASSSTAB 1:200

ÜBERBAUUNG
WANNERSMATT
3250 LYSS

Übersichtsplan
Einstellhalle



Typ A 10t
Typ B 10s
Typ B 10r
Typ B 10q
Typ B 10p
Typ B 10o
Typ B 10n
Typ B 10m
Typ B 10l
Typ B 10k
Typ B 10j
Typ B 10i
Typ B 10h
Typ B 10g
Typ B 10f
Typ B 10e
Typ B 10d
Typ B 10c
Typ B 10b
Typ B 10a
Typ A
Typ B
Typ C
Typ D
Typ E 8g
Typ E 8f
Typ F 8e
Typ F 8d
Typ F 8c
Typ F 8b
Typ F 8a
Typ G 6f
Typ H 6e
Typ H 6d
Typ H 6c
Typ H 6b
Typ G 6a
Typ H 2i
Typ H 2h
Typ H 2g
Typ H 2f
Typ H 2e
Typ H 2d
Typ H 2c
Typ H 2b
Typ H 2a



MASSSTAB 1:600

0 10 M 20 M 50 M