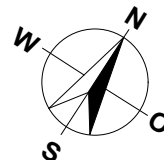


MEHRFAMILIENHAUS
MILCHGÄSSLI 10
3150 SCHWARZENBURG
3.5-ZIMMER

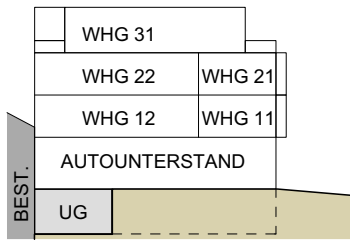
WOHNUNG: WHG 21, 2.OG
KELLER: 7.0 m²
LOGGIA / BALKON: 16.0 m²
NETTOWOHNFLÄCHE: 79.0 m²



WOHNUNG: WHG 22, 2.OG
KELLER: 7.0 m²
LOGGIA / BALKON: 18.0 m²
NETTOWOHNFLÄCHE: 80.0 m²

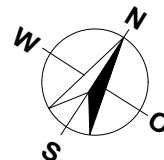
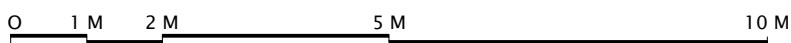


MASSSTAB 1:100

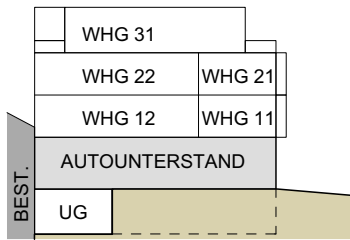


MEHRFAMILIENHAUS
MILCHGÄSSLI 10
3150 SCHWARZENBURG

UNTERGESCHOSS MFH

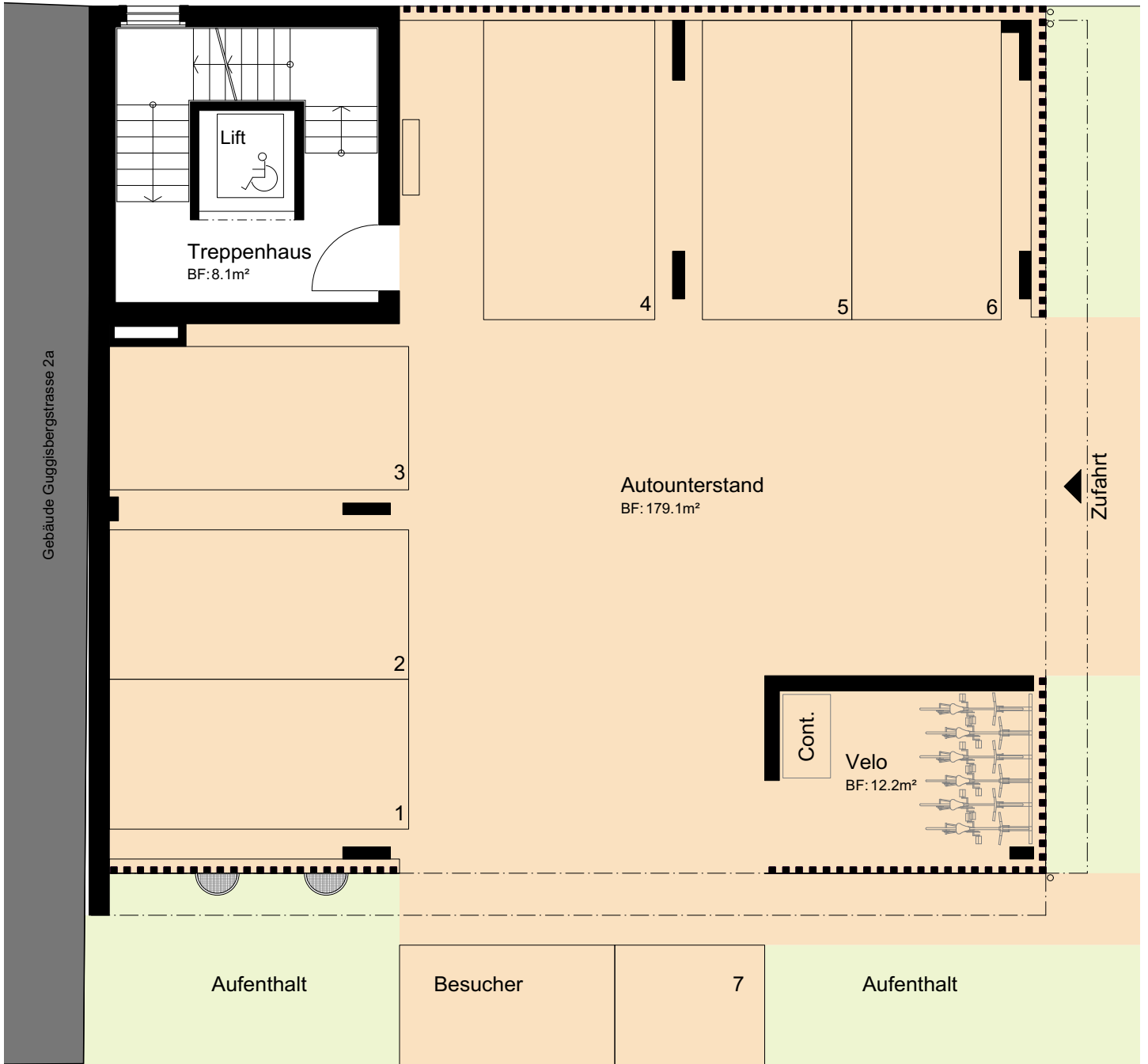


MASSSTAB 1:100

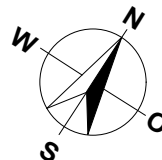


MEHRFAMILIENHAUS
MILCHGÄSSLI 10
3150 SCHWARZENBURG

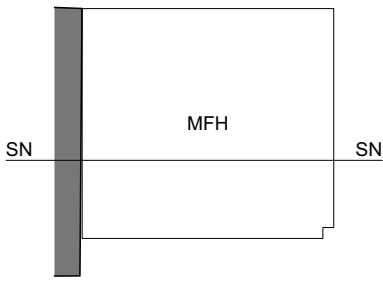
ERDGESCHOSS MFH



0 1 M 2 M 5 M 10 M

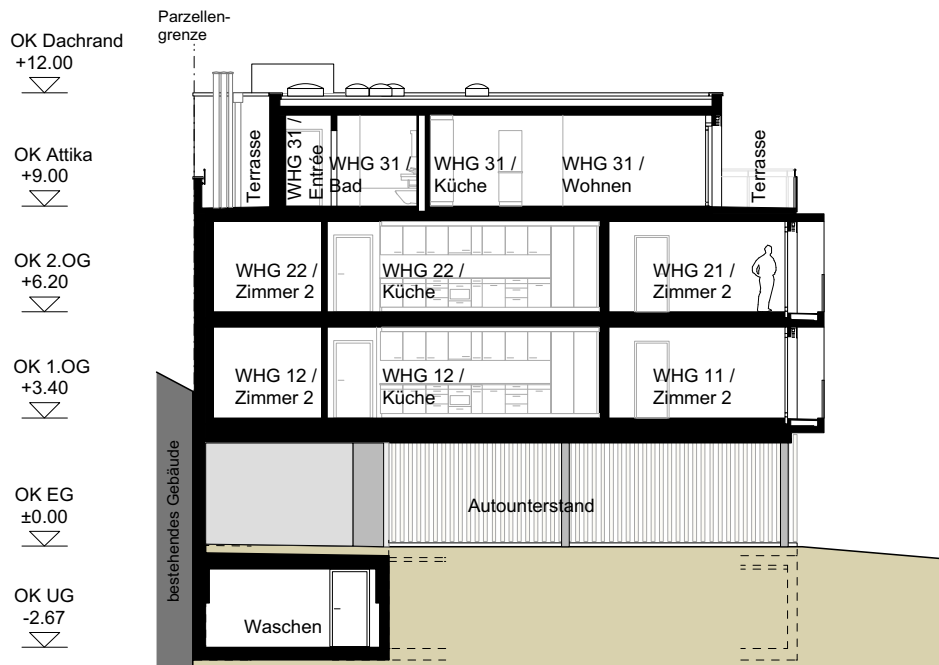


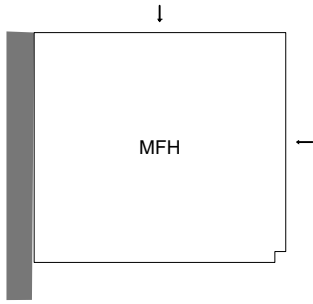
MASSSTAB 1:100



MEHRFAMILIENHAUS
MILCHGÄSSLI 10
3150 SCHWARZENBURG

SCHNITT



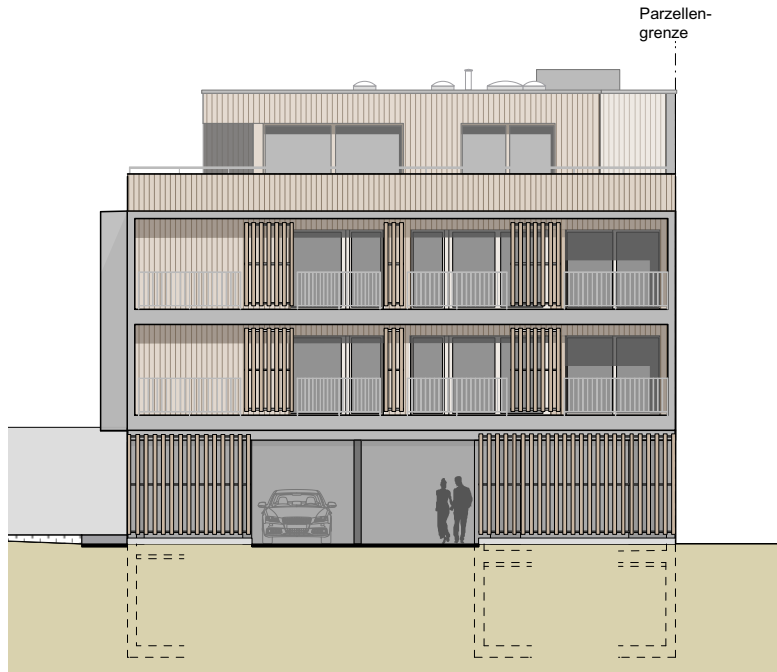


MEHRFAMILIENHAUS
MILCHGÄSSLI 10
3150 SCHWARZENBURG

FASSADEN

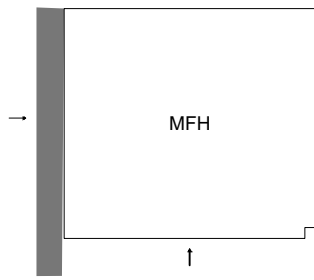


Nord



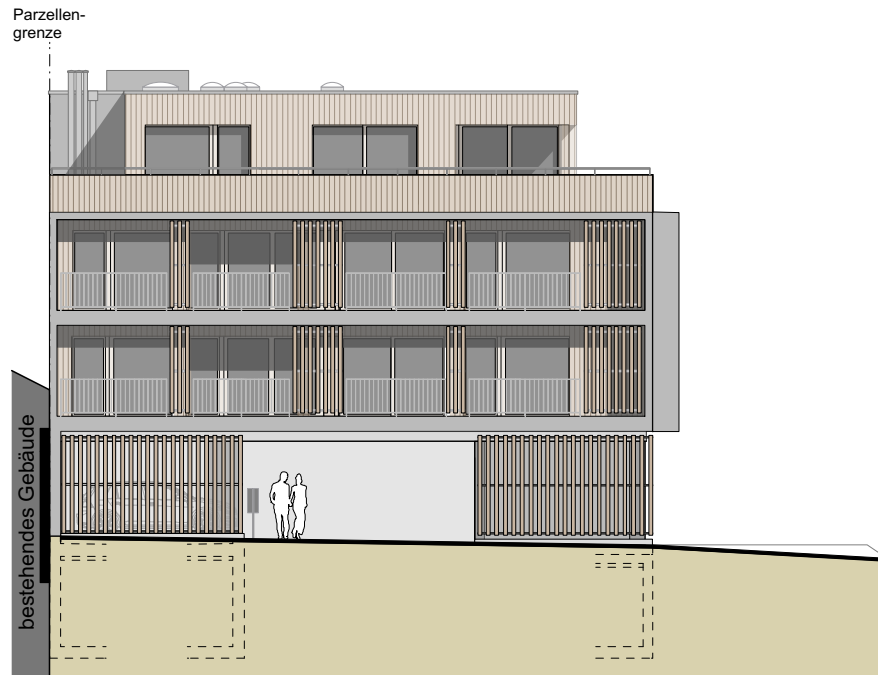
Ost



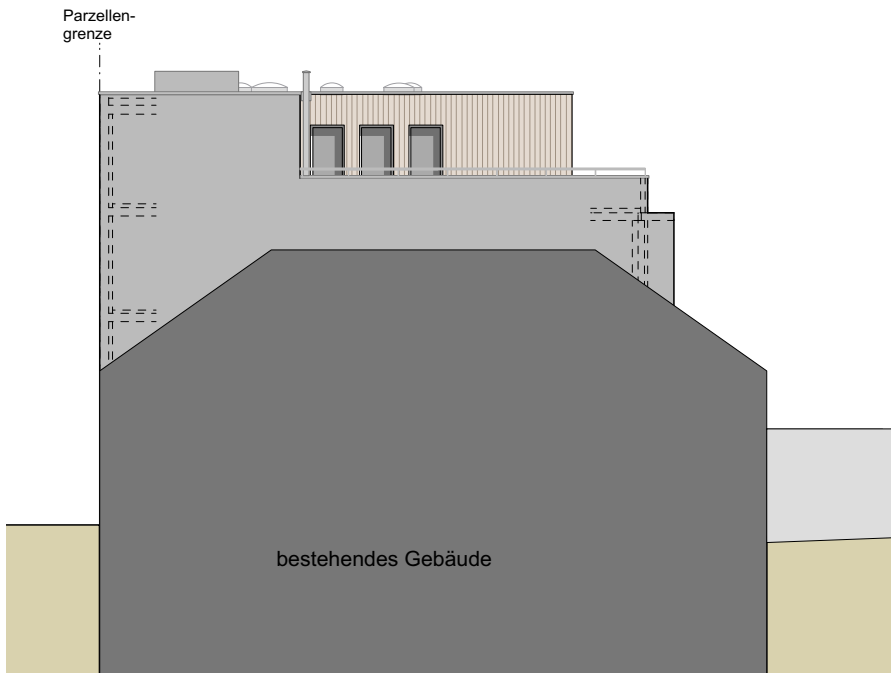


MEHRFAMILIENHAUS
MILCHGÄSSLI 10
3150 SCHWARZENBURG

FASSADEN



Süd



West



MASSSTAB 1:200