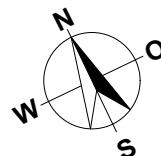


MEHRFAMILIENHAUS  
BOESINGENSTRASSE  
3177 LAUPEN  
2.5 ZIMMER

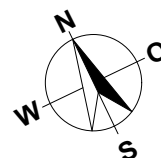
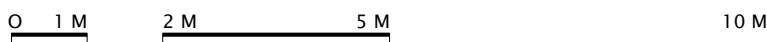
WOHNUNG: WHG 6, 1. OG  
 KELLER: 8.0 m<sup>2</sup>  
 SITZPLATZ: 15.0 m<sup>2</sup>  
 NETTOWOHNFLÄCHE: 70.0 m<sup>2</sup>



MASSTAB 1:100

MEHRFAMILIENHAUS  
BOESINGENSTRASSE  
3177 LAUPEN

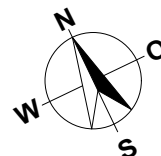
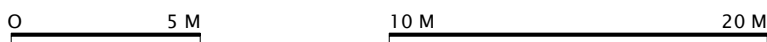
UNTERGESCHOSS LINKS

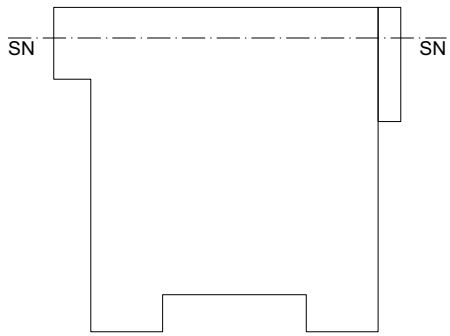


MASSTAB 1:100

MEHRFAMILIENHAUS  
BOESINGENSTRASSE  
3177 LAUPEN

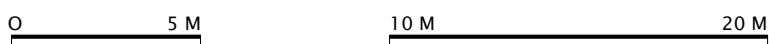
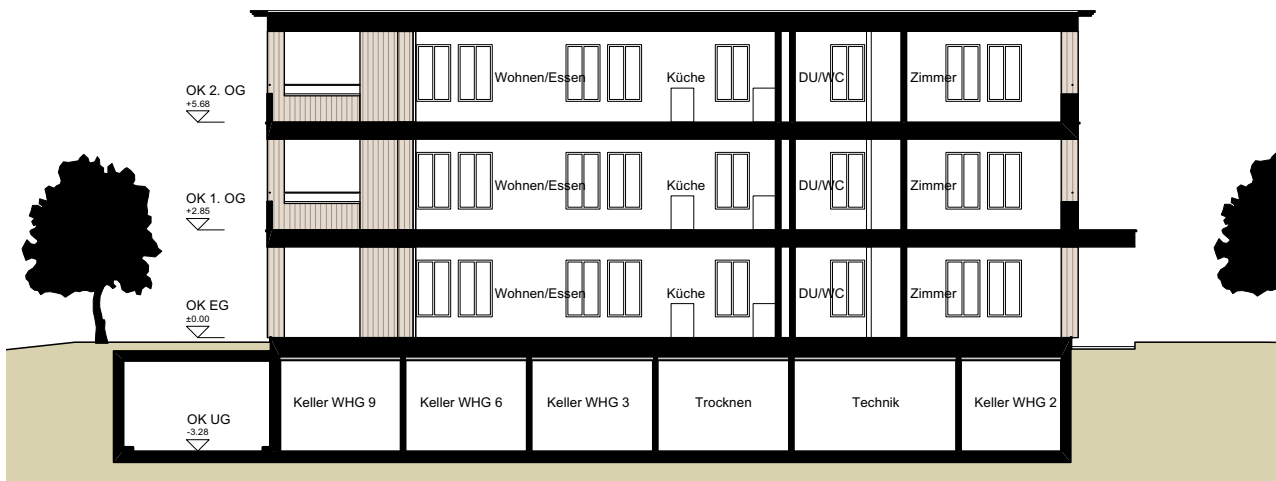
EINSTELLHALLE / KELLER



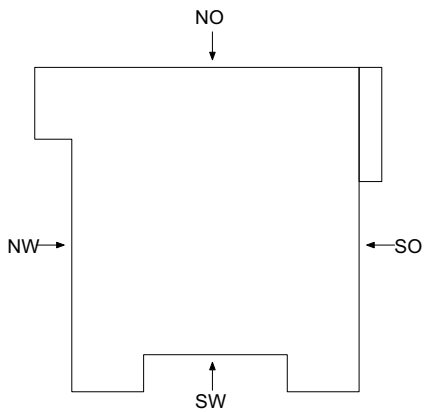


MEHRFAMILIENHAUS  
BOESINGENSTRASSE  
3177 LAUPEN

SCHNITT



MASSSTAB 1:200



MEHRFAMILIENHAUS  
BOESINGENSTRASSE  
3177 LAUPEN

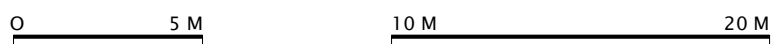
FASSADEN



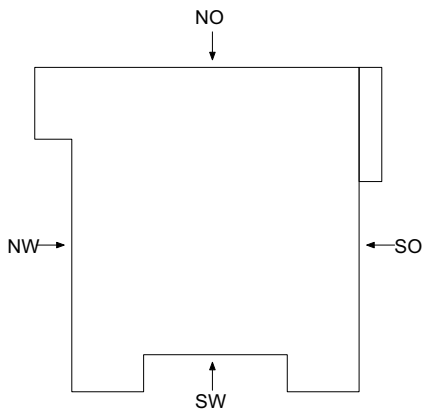
Nordwestfassade



Südwestfassade

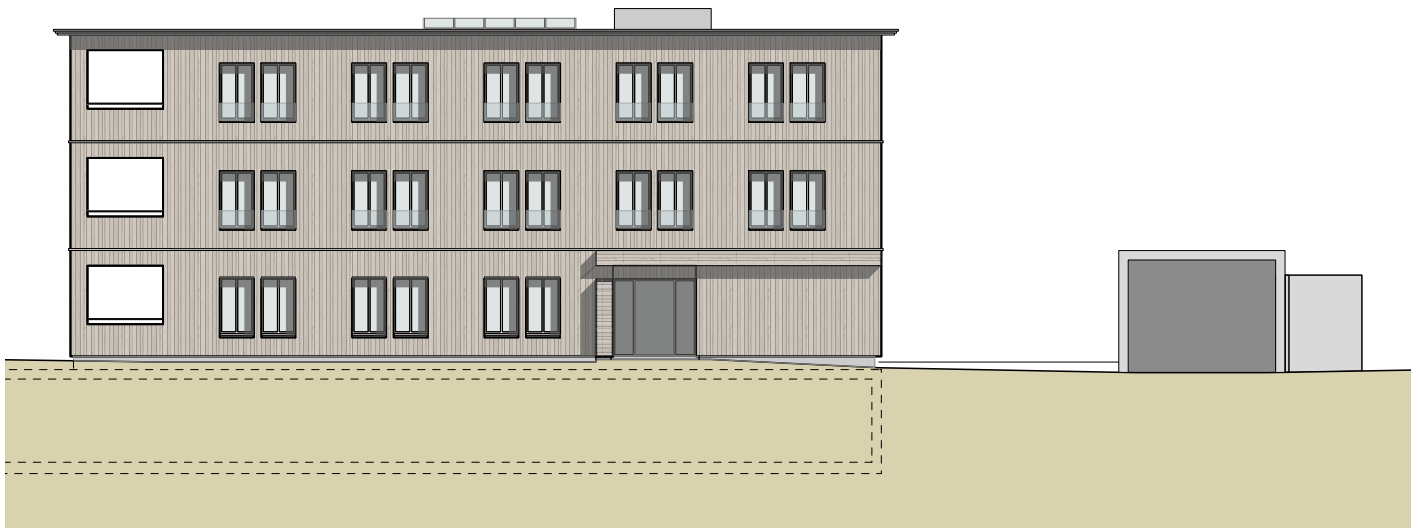


MASSTAB 1:200



MEHRFAMILIENHAUS  
BOESINGENSTRASSE  
3177 LAUPEN

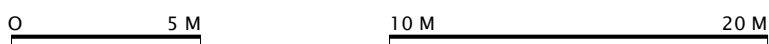
FASSADEN



Südostfassade



Nordostfassade



MASSTAB 1:200