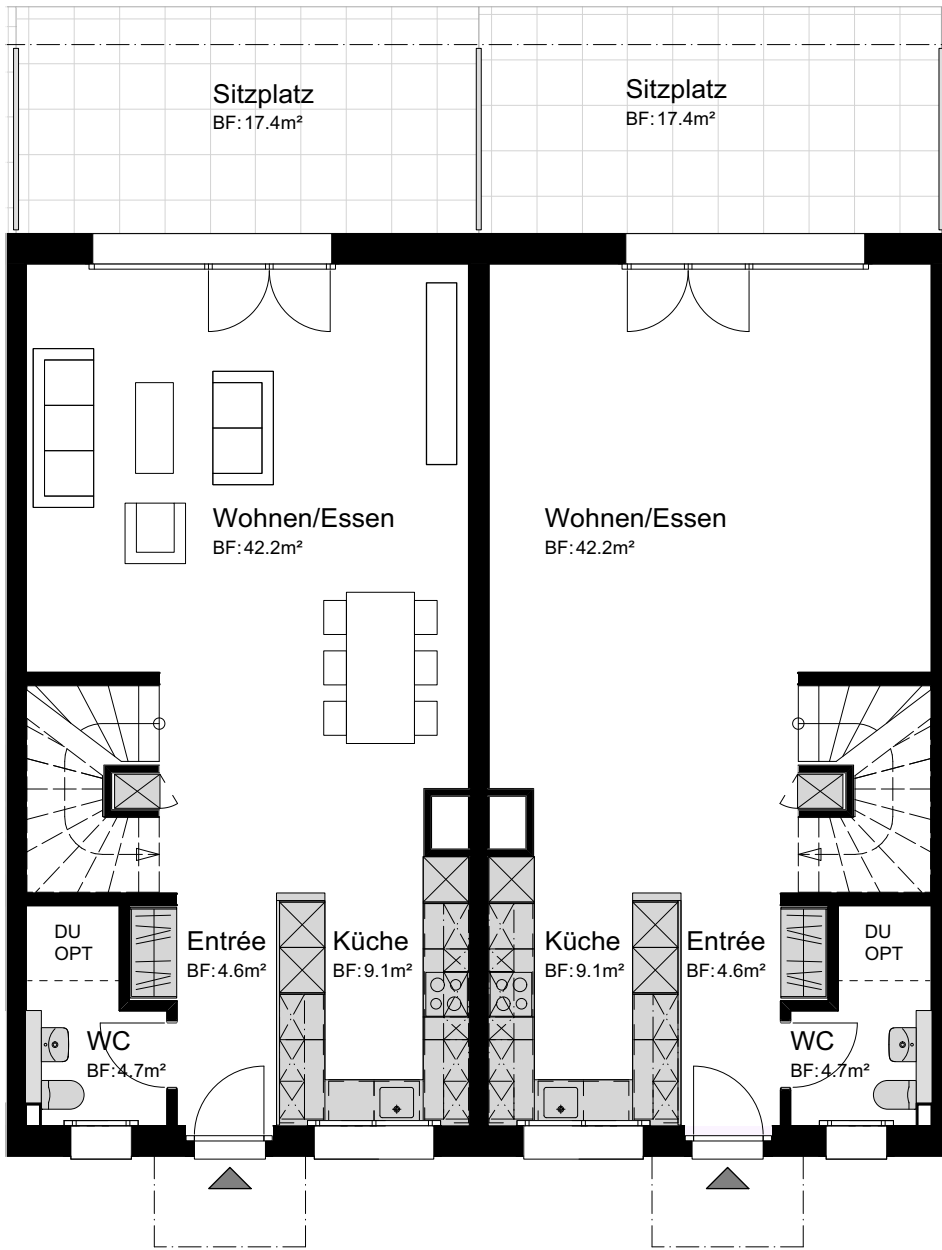
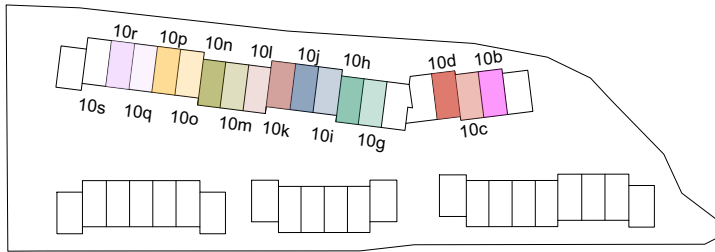


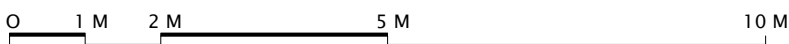
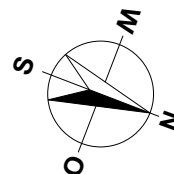
ÜBERBAUUNG
WANNERSMATT
3250 LYSS

ERDGESCHOSS
REFH 10b bis 10d
REFH 10g bis 10s
Typ B



REFH 10r	REFH 10i
REFH 10p	REFH 10g
REFH 10m	REFH 10d
REFH 10k	REFH 10b

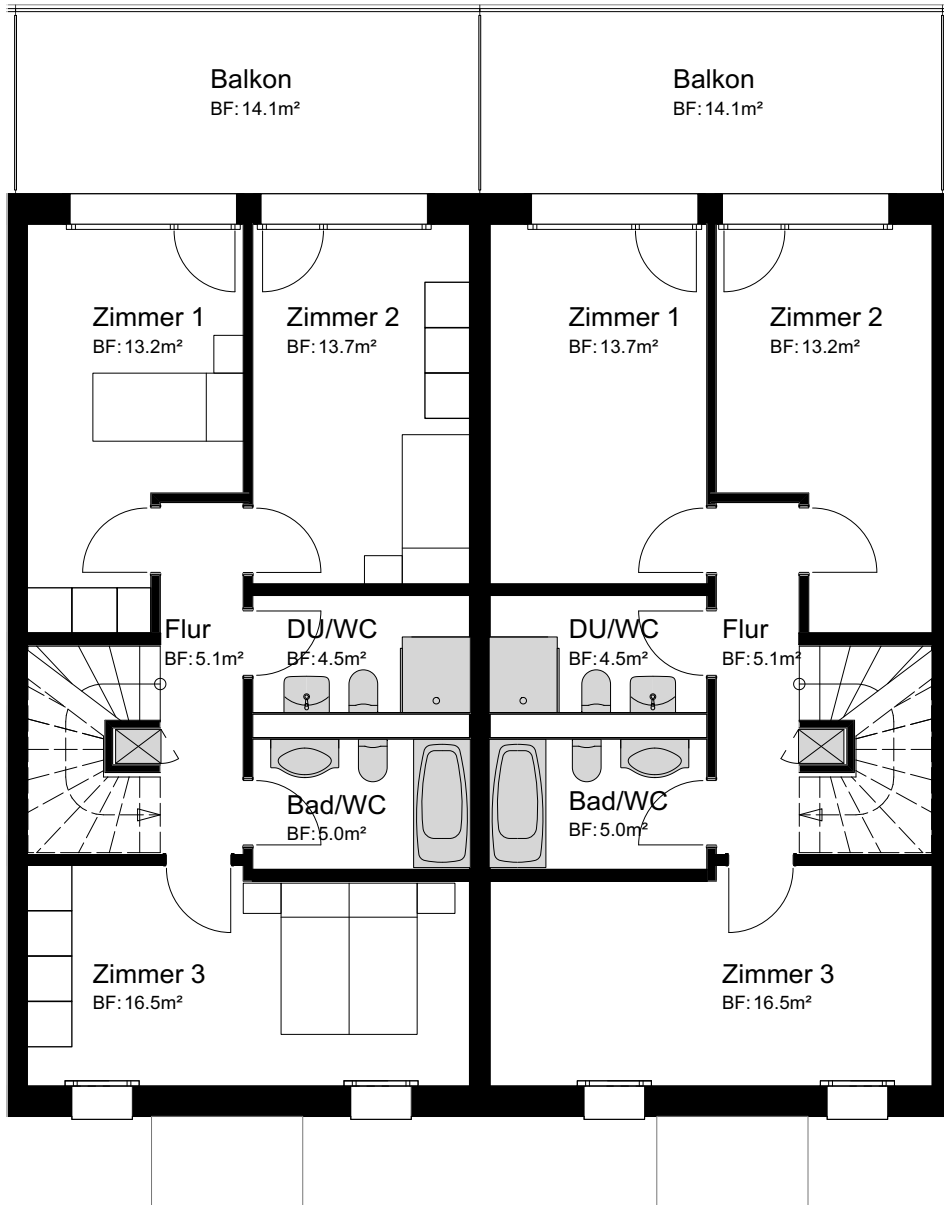
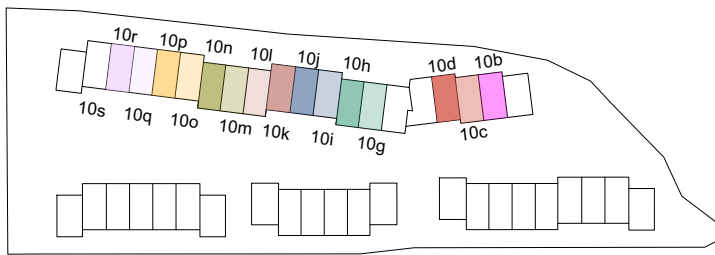
REFH 10q	REFH 10l
REFH 10s	REFH 10j
REFH 10o	REFH 10h
REFH 10n	REFH 10c



MASSSTAB 1:100

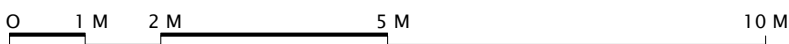
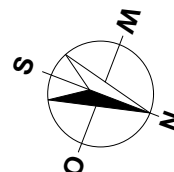
ÜBERBAUUNG
WANNERSMATT
3250 LYSS

OBERGESCHOSS
REFH 10b bis 10d
REFH 10g bis 10s
Typ B



REFH 10r	REFH 10i
REFH 10p	REFH 10g
REFH 10m	REFH 10d
REFH 10k	REFH 10b

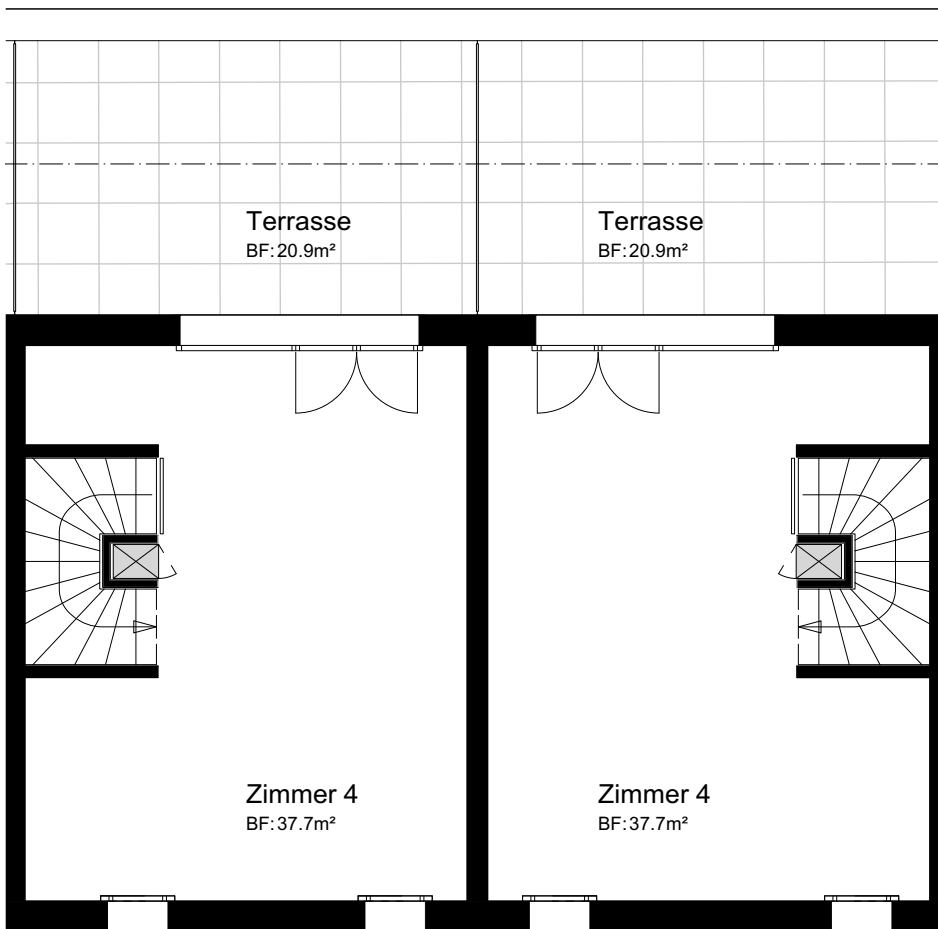
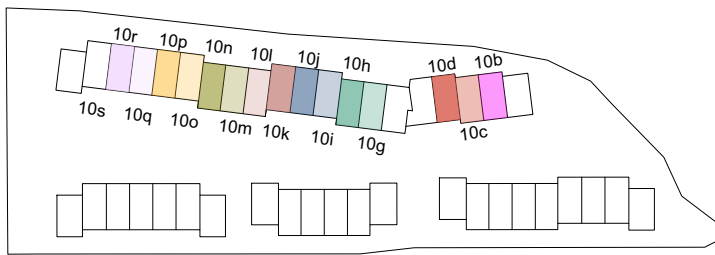
REFH 10q	REFH 10l
REFH 10s	REFH 10j
REFH 10o	REFH 10h
REFH 10n	REFH 10c



MASSSTAB 1:100

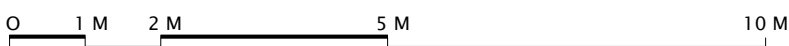
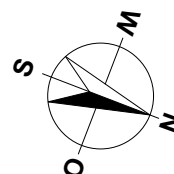
ÜBERBAUUNG
WANNERSMATT
3250 LYSS

ATTIKAGESCHOSS
REFH 10b bis 10d
REFH 10g bis 10s
Typ B



REFH 10r	REFH 10i
REFH 10p	REFH 10g
REFH 10m	REFH 10d
REFH 10k	REFH 10b

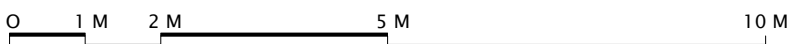
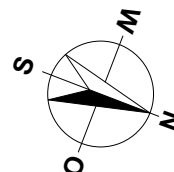
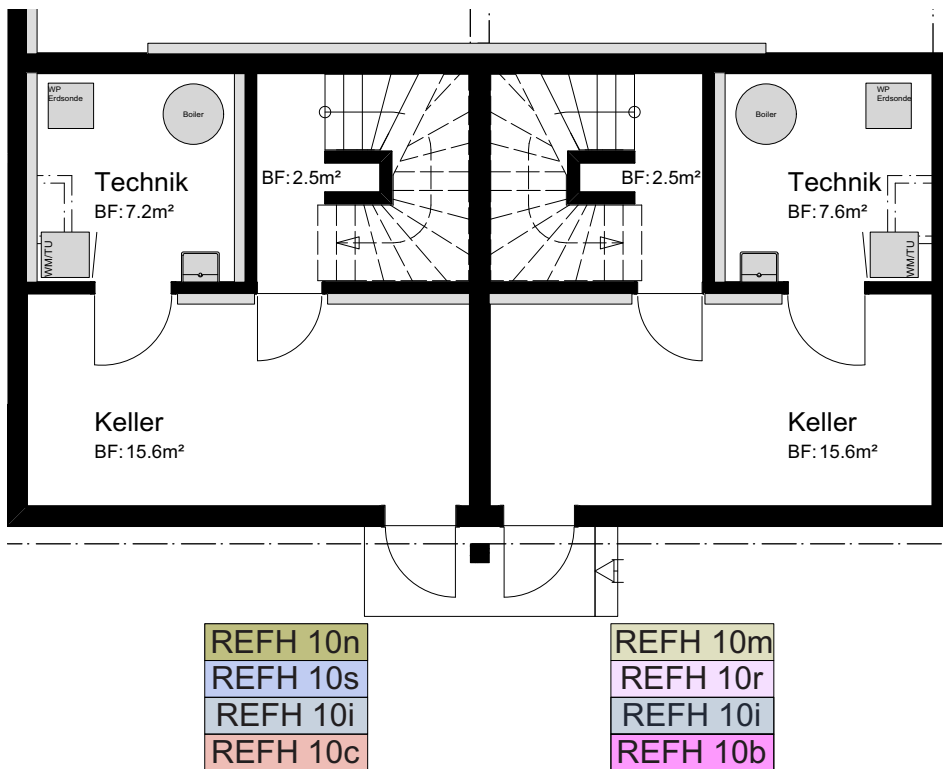
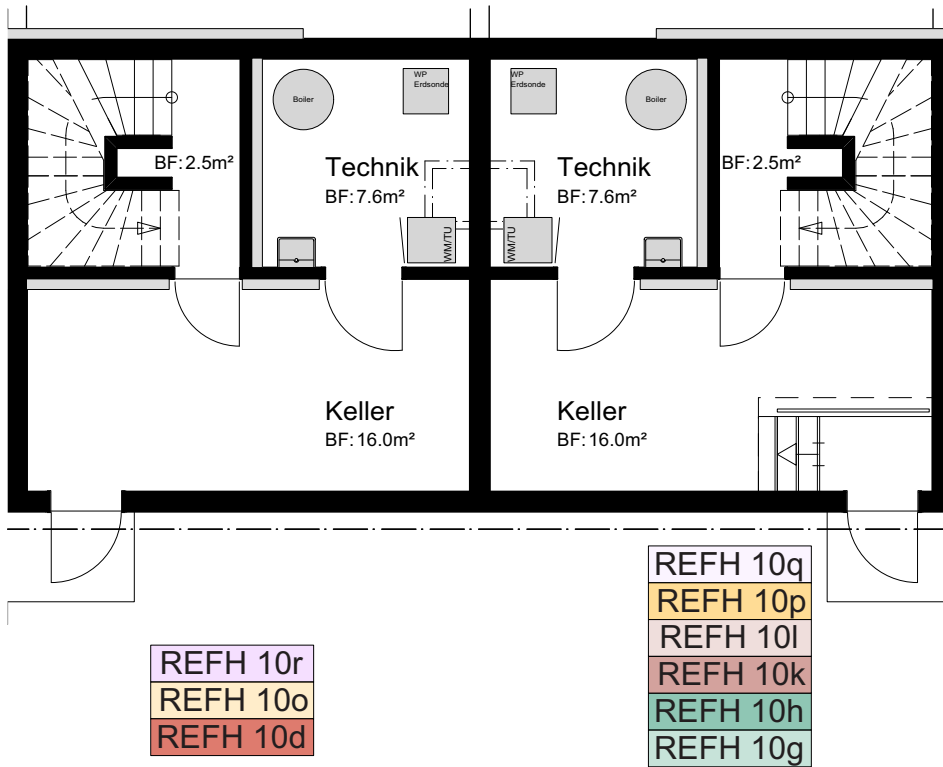
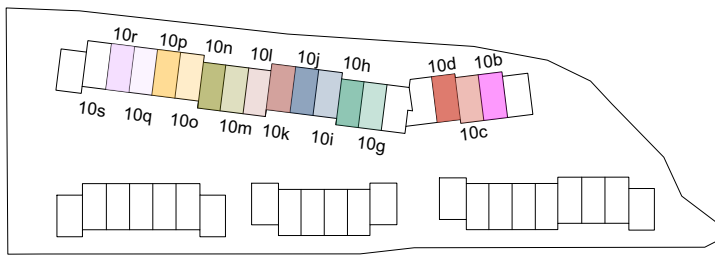
REFH 10q	REFH 10l
REFH 10s	REFH 10j
REFH 10o	REFH 10h
REFH 10n	REFH 10c



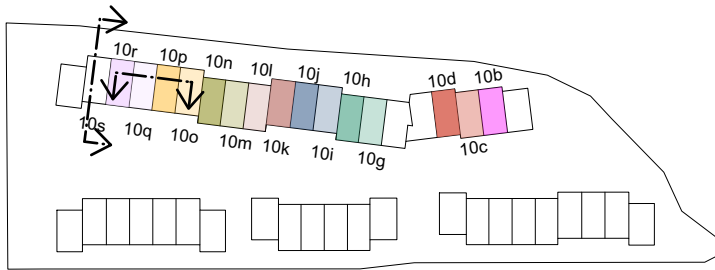
MASSSTAB 1:100

ÜBERBAUUNG
WANNERSMATT
3250 LYSS

UNTERGESCHOSS
REFH 10b bis 10d
REFH 10g bis 10s
Typ B

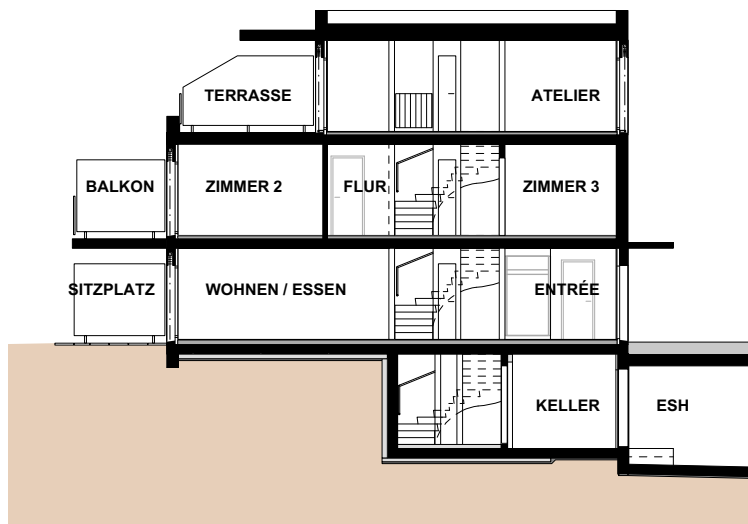
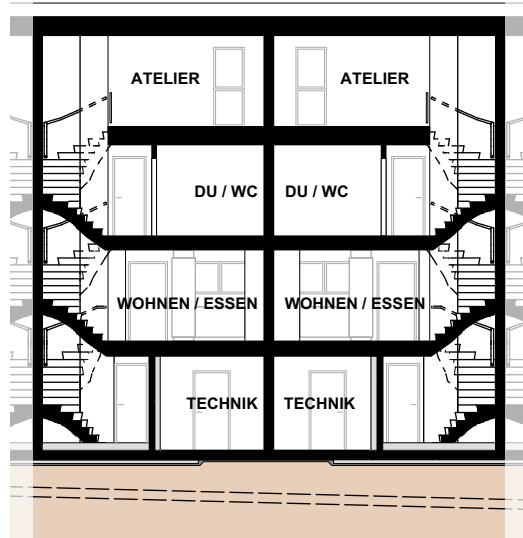


MASSSTAB 1:100



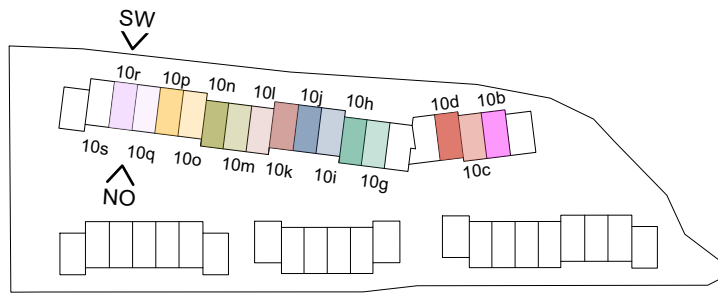
ÜBERBAUUNG
WANNERSMATT
3250 LYSS

SCHEMASCHNITTE
REFH 10b bis 10d
REFH 10g bis 10s
Typ B



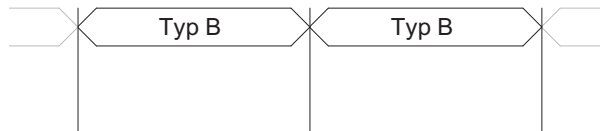
0 1 M 2 M 5 M 10 M

MASSSTAB 1:200

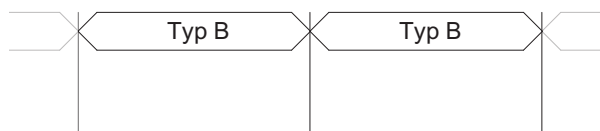


**ÜBERBAUUNG
WANNERSMATT
3250 LYSS**

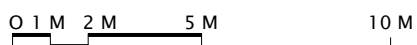
Fassaden
REFH 10b bis 10d
REFH 10g bis 10s
Typ B



NORDOST



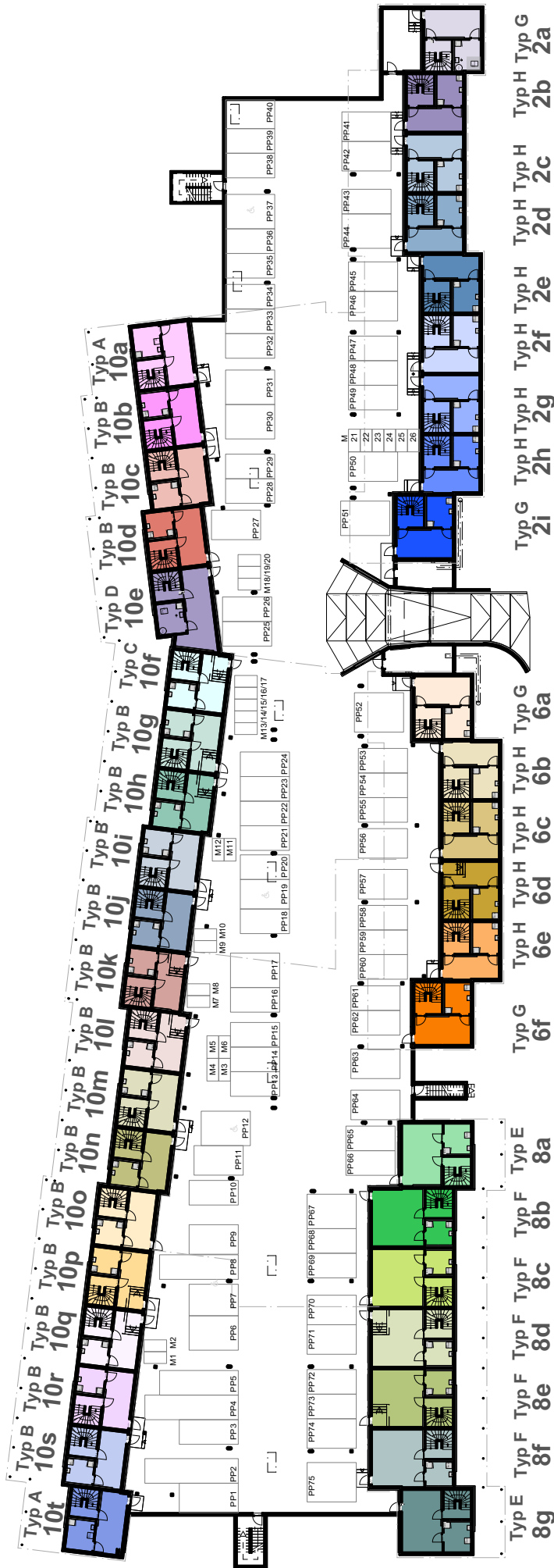
SÜDWEST



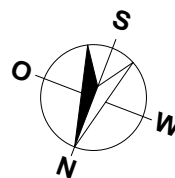
MASSTAB 1:200

ÜBERBAUUNG
WANNERSMATT
3250 LYSS

Übersichtsplan
Einstellhalle



Typ A 10s Typ B 10r Typ B 10q Typ B 10p Typ B 10o Typ B 10n Typ B 10m Typ B 10k Typ B 10j Typ B 10i Typ B 10h Typ B 10g Typ B 10f Typ B 10e Typ B 10d Typ B 10c Typ B 10b Typ B 10a
 Typ A 10t
 Typ B 10s
 Typ B 10r
 Typ B 10q
 Typ B 10p
 Typ B 10o
 Typ B 10n
 Typ B 10m
 Typ B 10k
 Typ B 10j
 Typ B 10i
 Typ B 10h
 Typ B 10g
 Typ B 10f
 Typ B 10e
 Typ B 10d
 Typ B 10c
 Typ B 10b
 Typ B 10a
 Typ G 6f
 Typ H 6e
 Typ H 6d
 Typ H 6c
 Typ H 6b
 Typ G 6a
 Typ G 2i
 Typ H 2h
 Typ H 2g
 Typ H 2f
 Typ H 2e
 Typ H 2d
 Typ H 2c
 Typ H 2b
 Typ H 2a



MASSSTAB 1:600

0 10 M 20 M 50 M