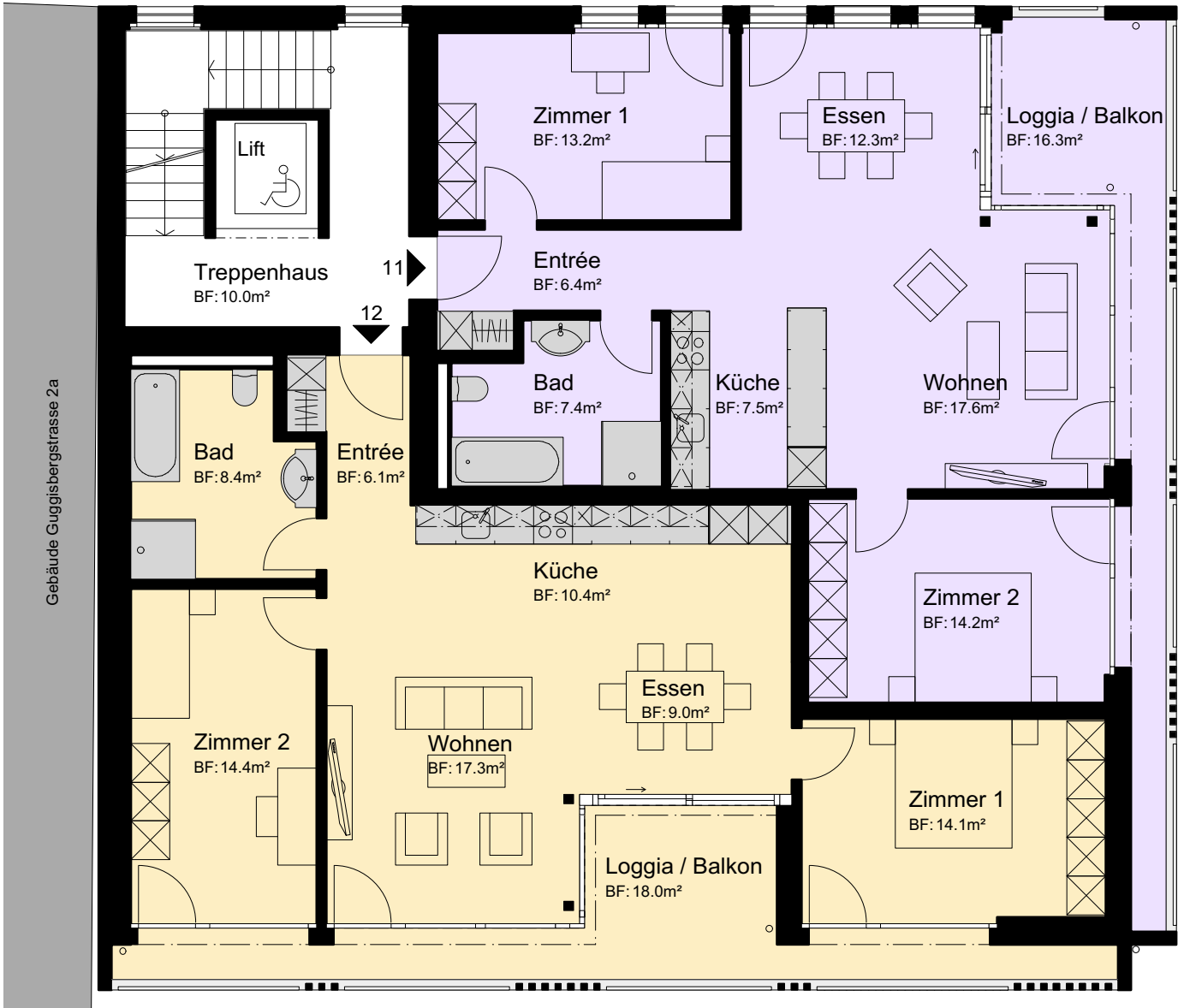
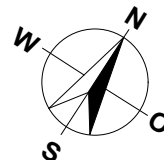
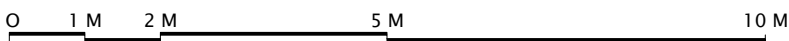


MEHRFAMILIENHAUS  
MILCHGÄSSLI 10  
3150 SCHWARZENBURG  
3.5-ZIMMER

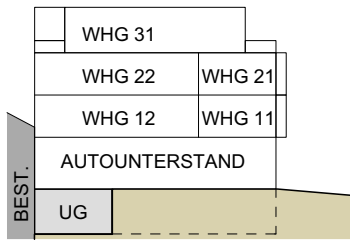
WOHNUNG: WHG 11, 1.OG  
 KELLER: 7.0 m<sup>2</sup>  
 LOGGIA / BALKON: 16.0 m<sup>2</sup>  
 NETTOWOHNFLÄCHE: 79.0 m<sup>2</sup>



WOHNUNG: WHG 12, 1.OG  
 KELLER: 7.0 m<sup>2</sup>  
 LOGGIA / BALKON: 18.0 m<sup>2</sup>  
 NETTOWOHNFLÄCHE: 80.0 m<sup>2</sup>

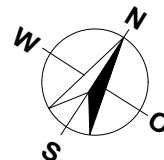
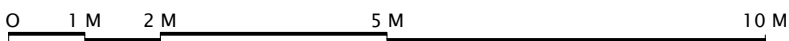


MASSSTAB 1:100

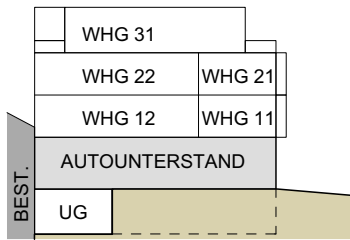


MEHRFAMILIENHAUS  
 MILCHGÄSSLI 10  
 3150 SCHWARZENBURG

UNTERGESCHOSS MFH

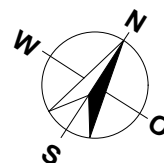
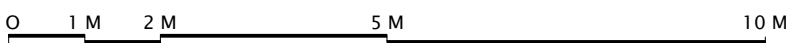
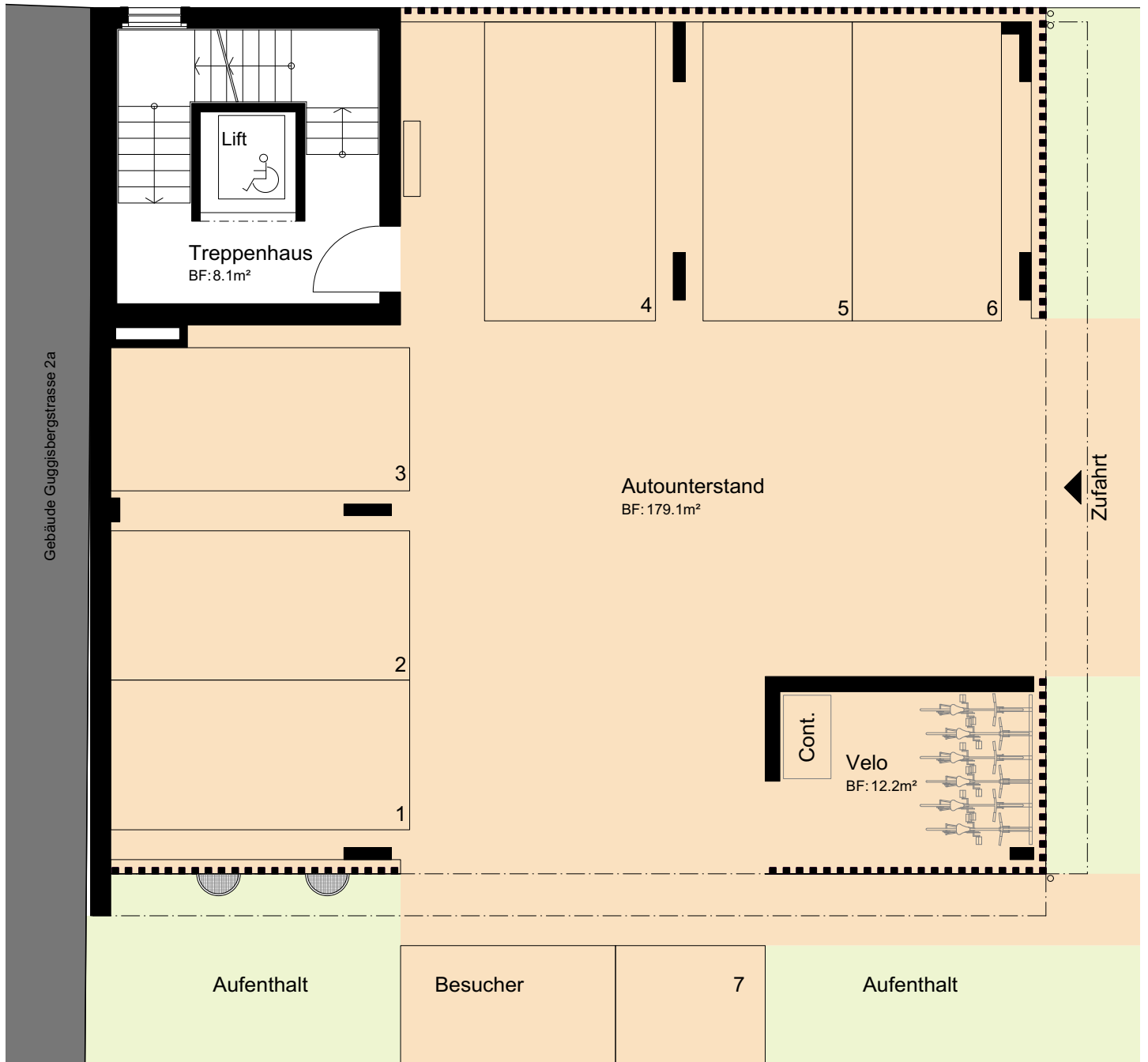


MASSSTAB 1:100

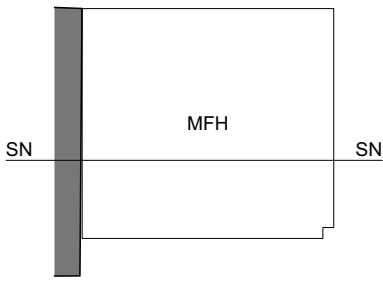


MEHRFAMILIENHAUS  
MILCHGÄSSLI 10  
3150 SCHWARZENBURG

ERDGESCHOSS MFH

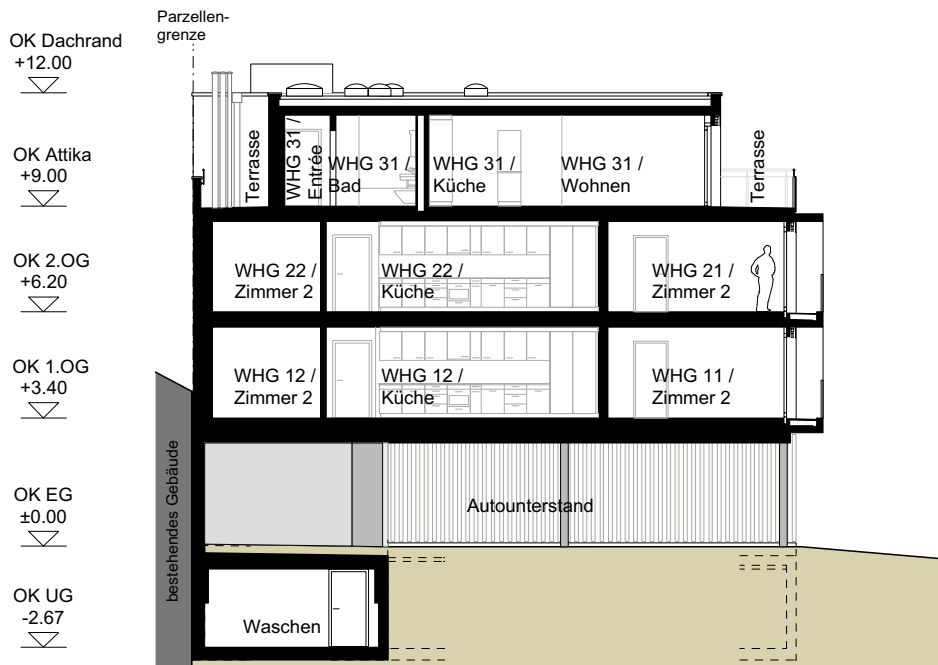


MASSSTAB 1:100

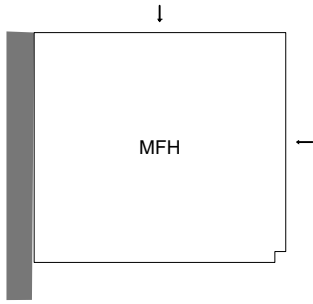


MEHRFAMILIENHAUS  
MILCHGÄSSLI 10  
3150 SCHWARZENBURG

SCHNITT



MASSSTAB 1:200

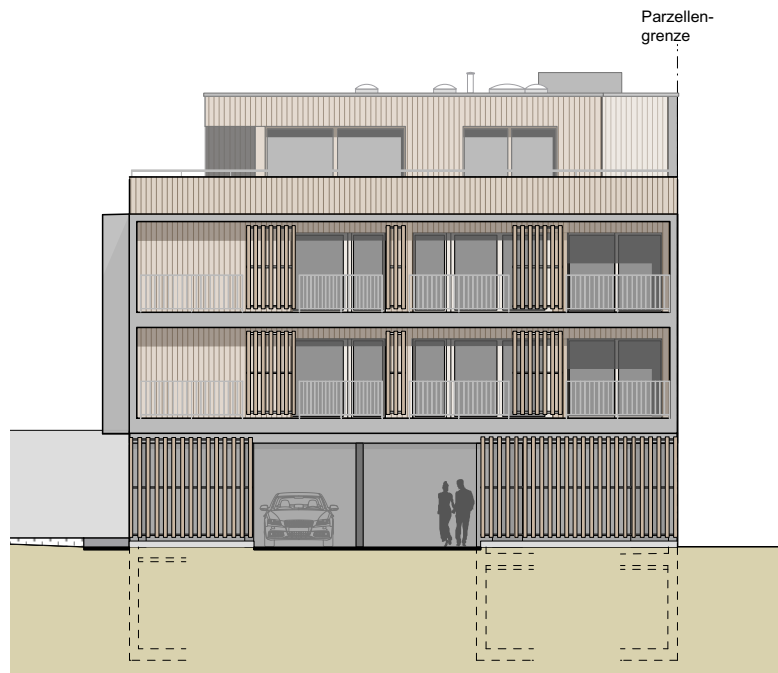


MEHRFAMILIENHAUS  
MILCHGÄSSLI 10  
3150 SCHWARZENBURG

FASSADEN



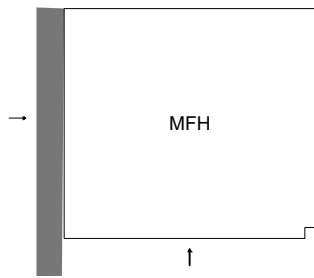
Nord



Ost

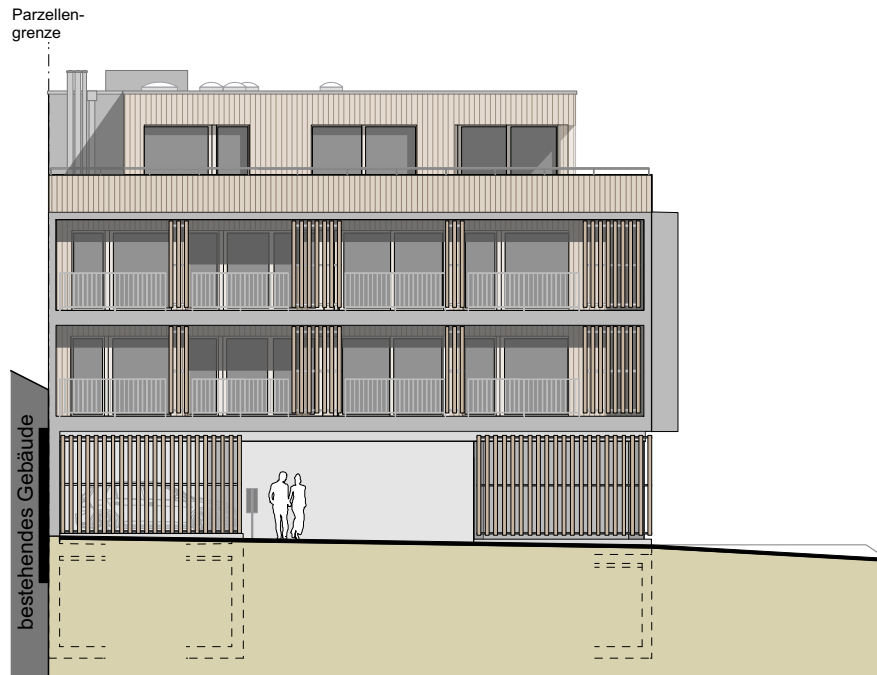


MASSSTAB 1:200

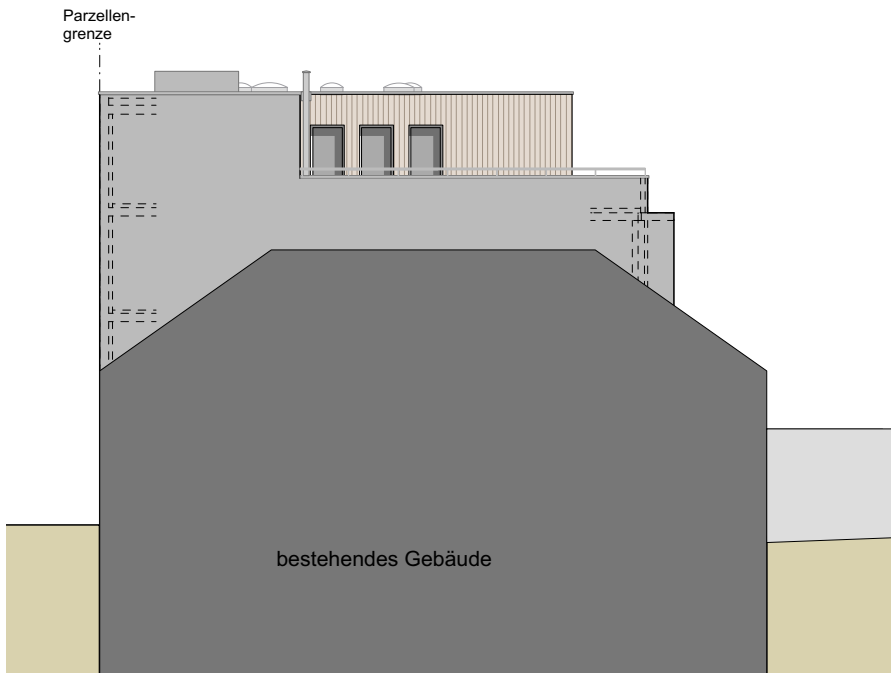


MEHRFAMILIENHAUS  
MILCHGÄSSLI 10  
3150 SCHWARZENBURG

FASSADEN



Süd



West



MASSSTAB 1:200