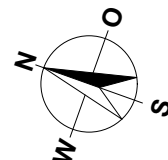
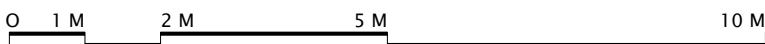
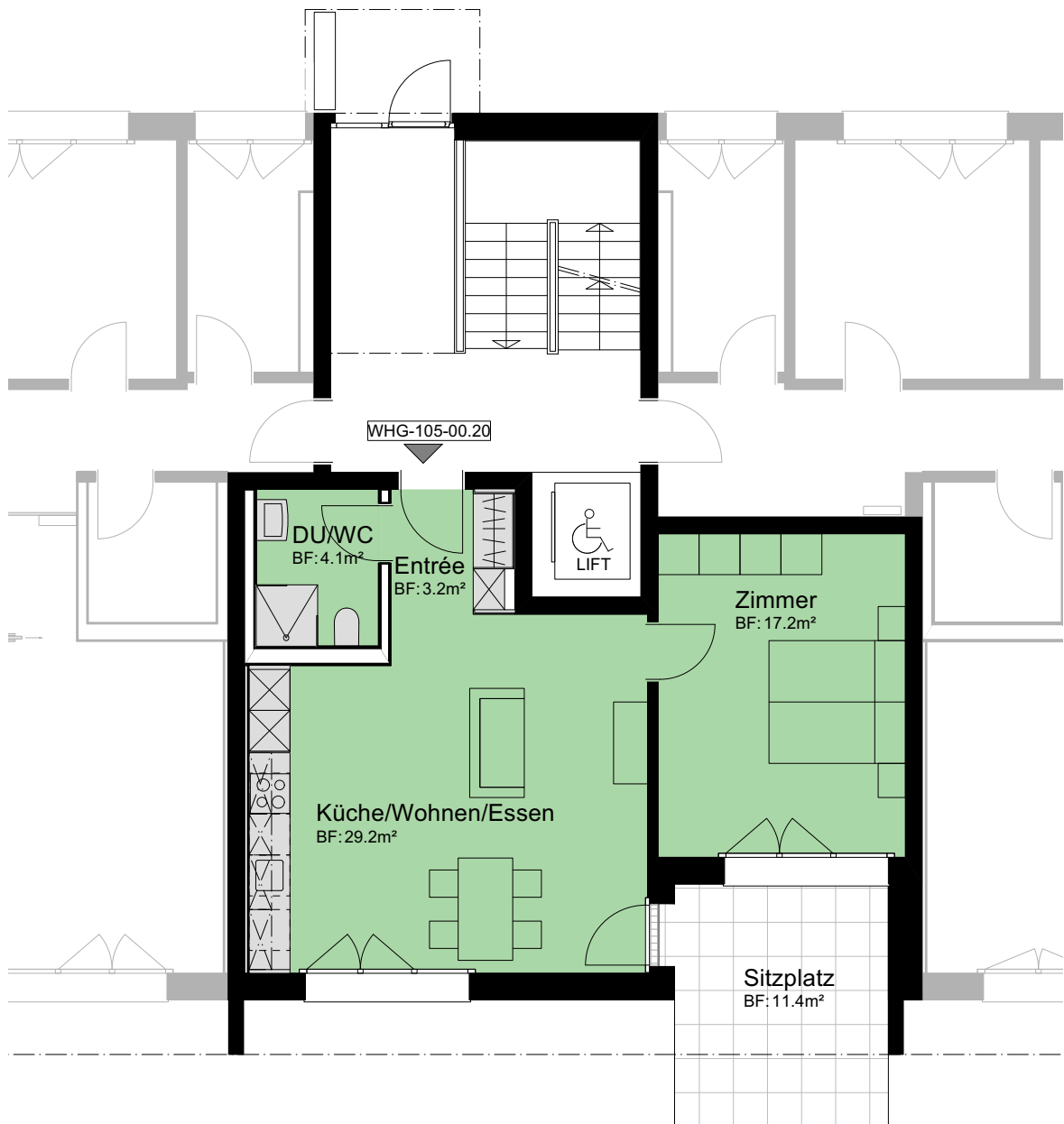
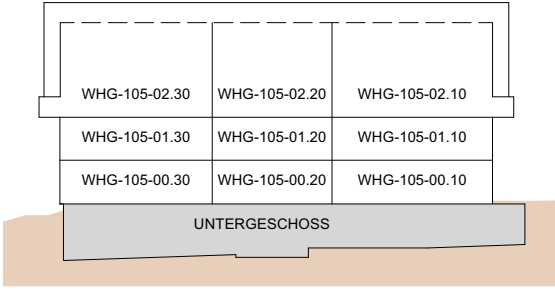


MEHRFAMILIENHAUS  
 ZILMATTSTRASSE 105  
 3255 RAPPERSWIL (BE)  
 2.5 ZIMMER

WOHNUNG: WHG-105-00.20, EG  
 KELLER: 7.5 m<sup>2</sup>  
 SITZPLATZ: 11.5 m<sup>2</sup>  
 NETTOWOHNFLÄCHE: 53.5 m<sup>2</sup>

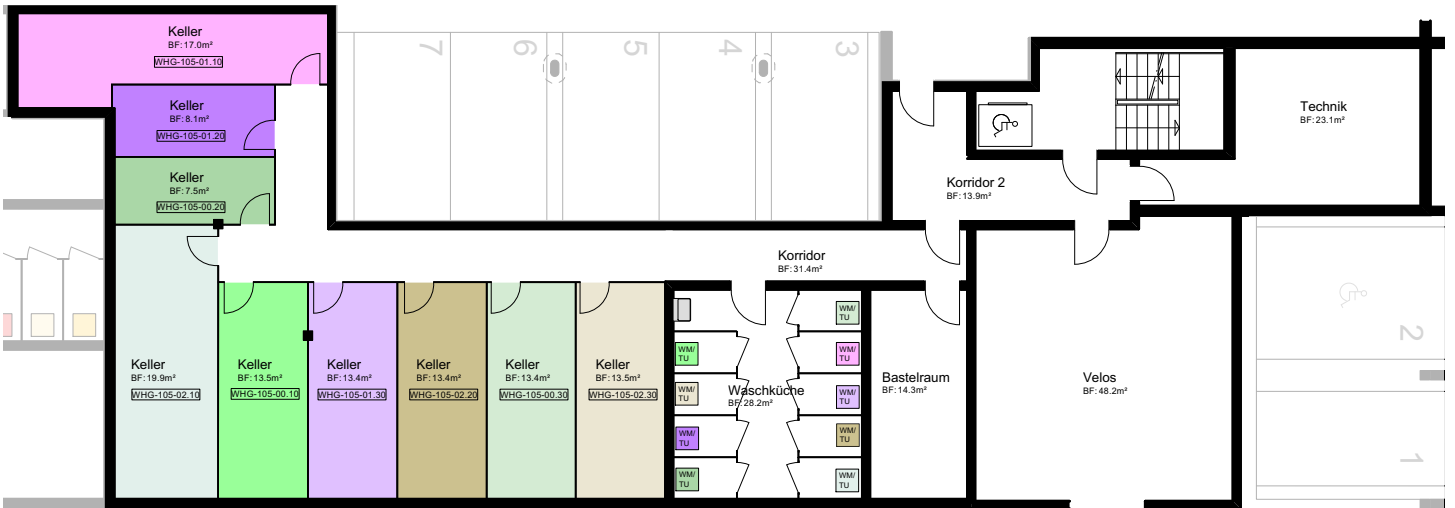


MASSTAB 1:100

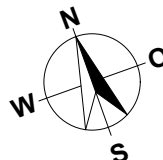


MEHRFAMILIENHAUS  
ZILMATTSTRASSE 105  
3255 RAPPERSWIL (BE)

HAUS 105  
UNTERGESCHOSS



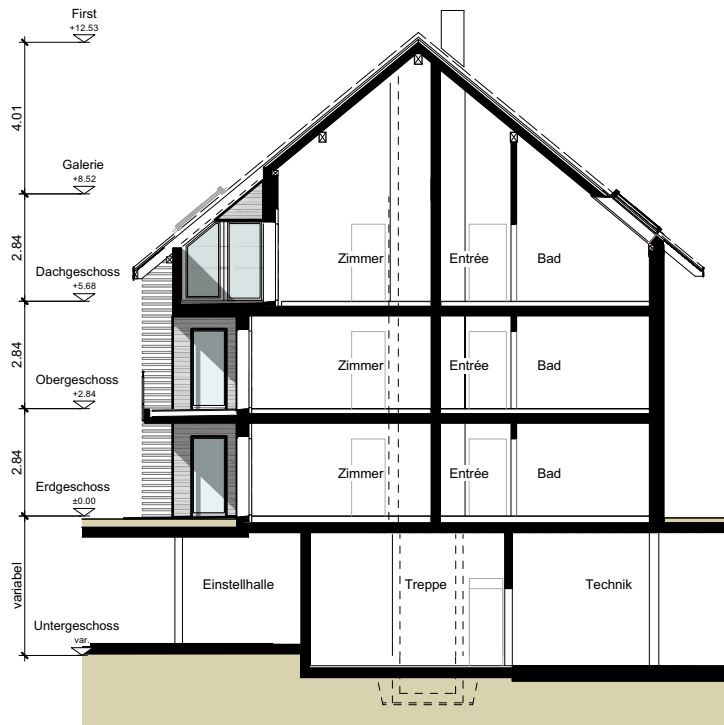
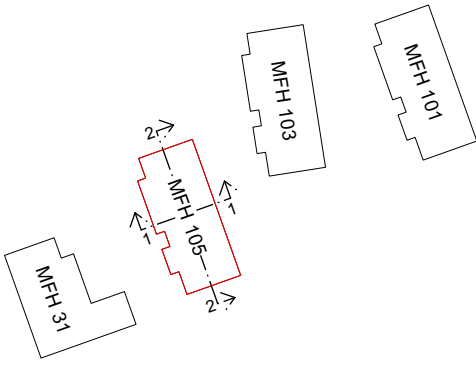
0 1 M 2 M 5 M 10 M



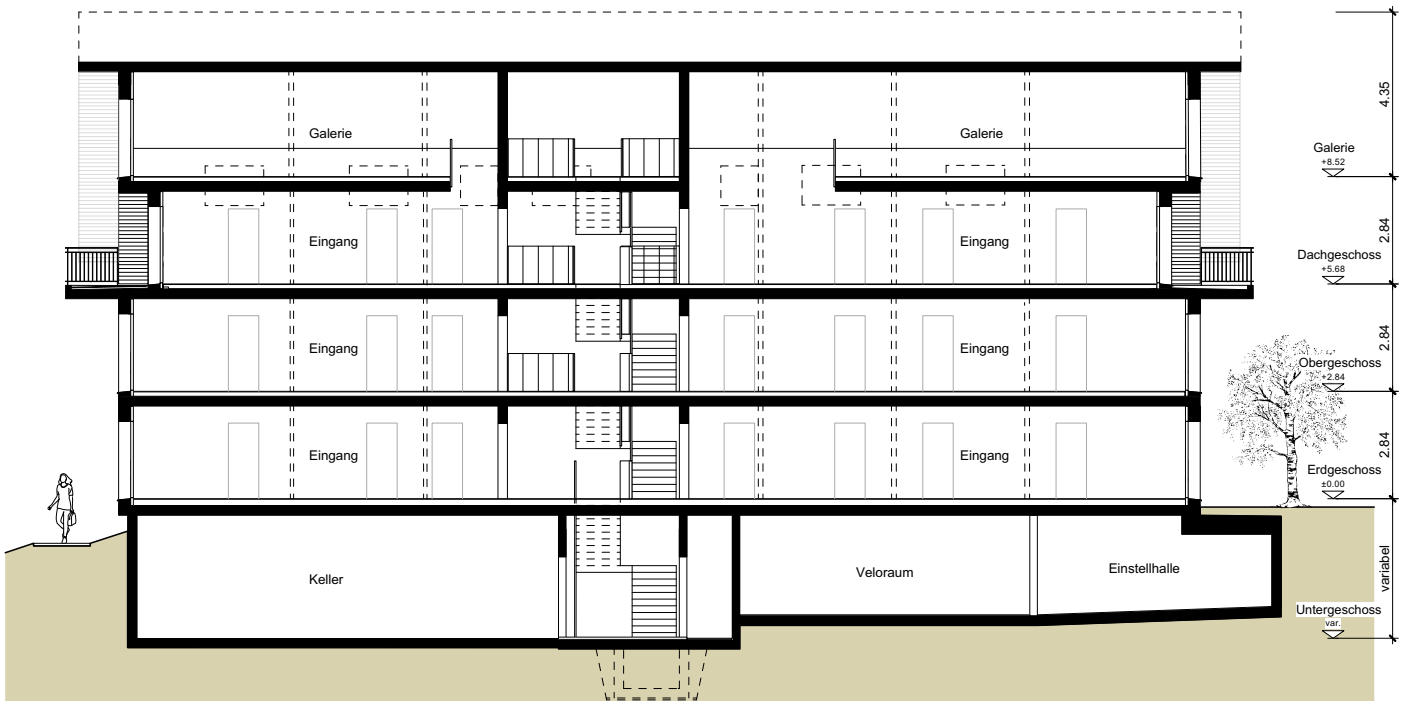
MASSTAB 1:200

MEHRFAMILIENHAUS  
ZILMATTSTRASSE 105  
3255 RAPPERSWIL (BE)

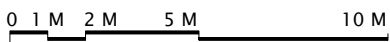
HAUS 105  
SCHNITTE



SCHNITT 1-1



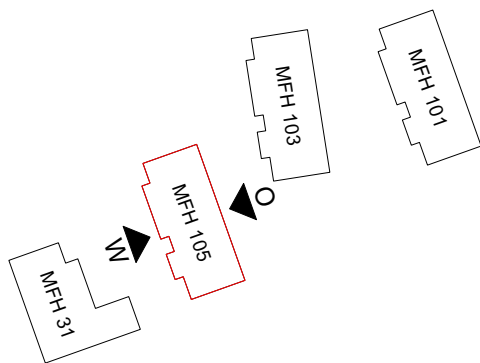
SCHNITT 2-2



MASSTAB 1:200

MEHRFAMILIENHAUS  
ZILMATTSTRASSE 105  
3255 RAPPERSWIL (BE)

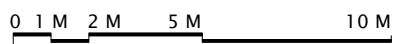
HAUS 105  
FASSADEN



OSTEN



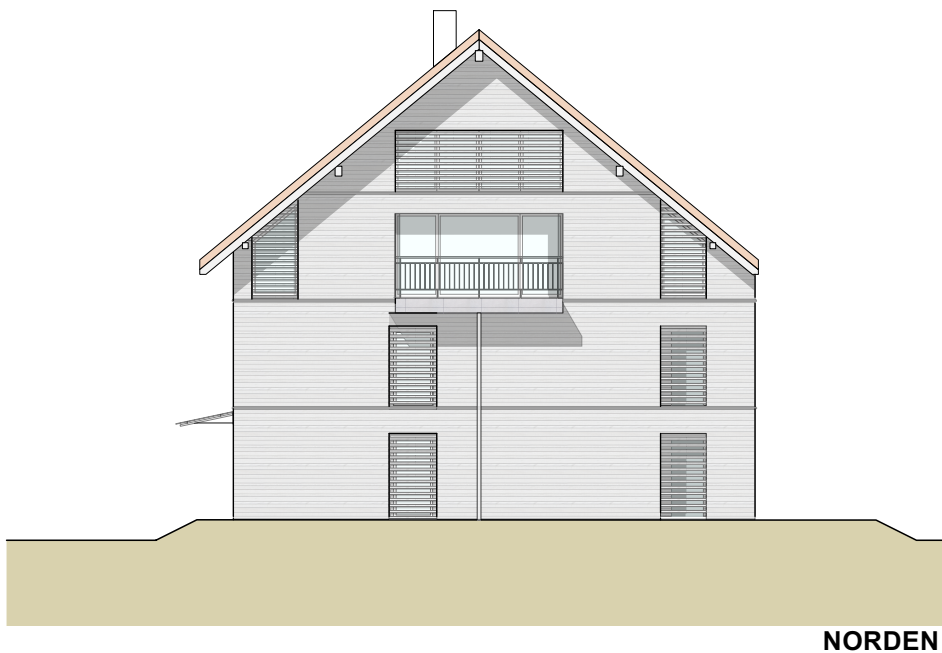
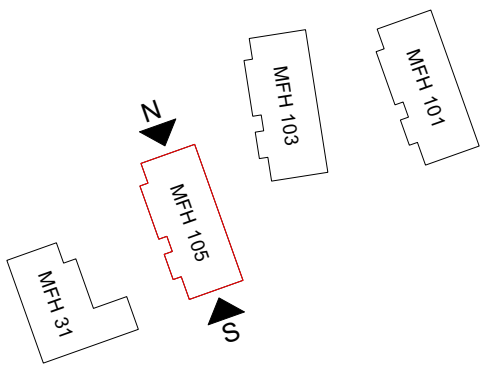
WESTEN



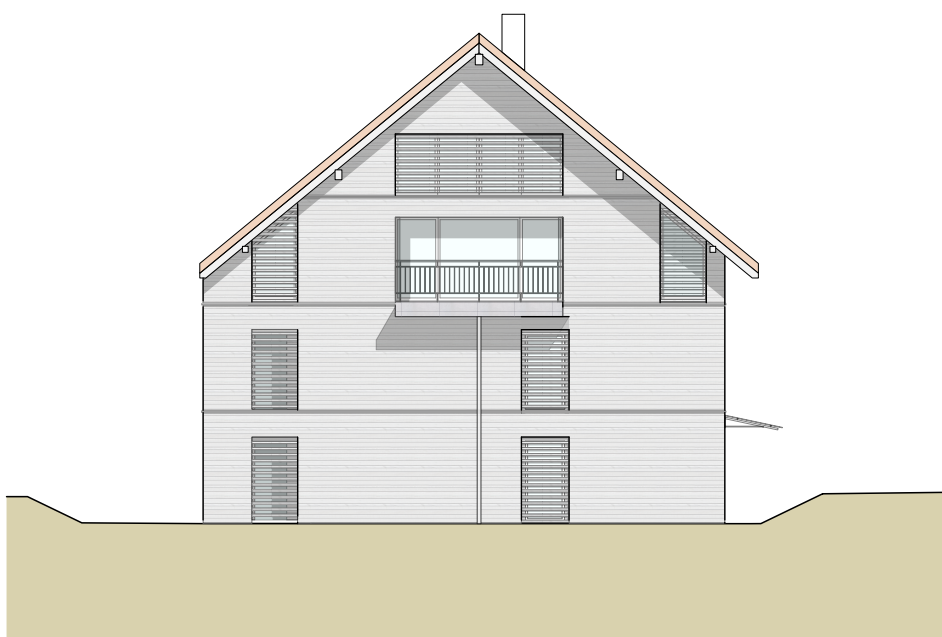
MASSTAB 1:200

MEHRFAMILIENHAUS  
ZILMATTSTRASSE 105  
3255 RAPPERSWIL (BE)

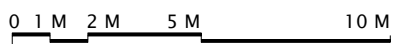
HAUS 105  
FASSADEN



NORDEN



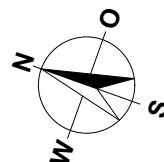
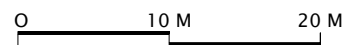
SÜDEN



MASSTAB 1:200

MEHRFAMILIENHÄUSER  
HAUPTSTRASSE 31  
ZILMATTSTRASSE 101, 103 UND 105  
3255 RAPPERSWIL (BE)

SITUATION / UNTERGESCHOSS / ESTH



MASSSTAB 1:500