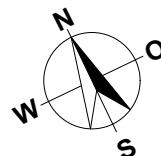
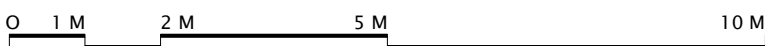
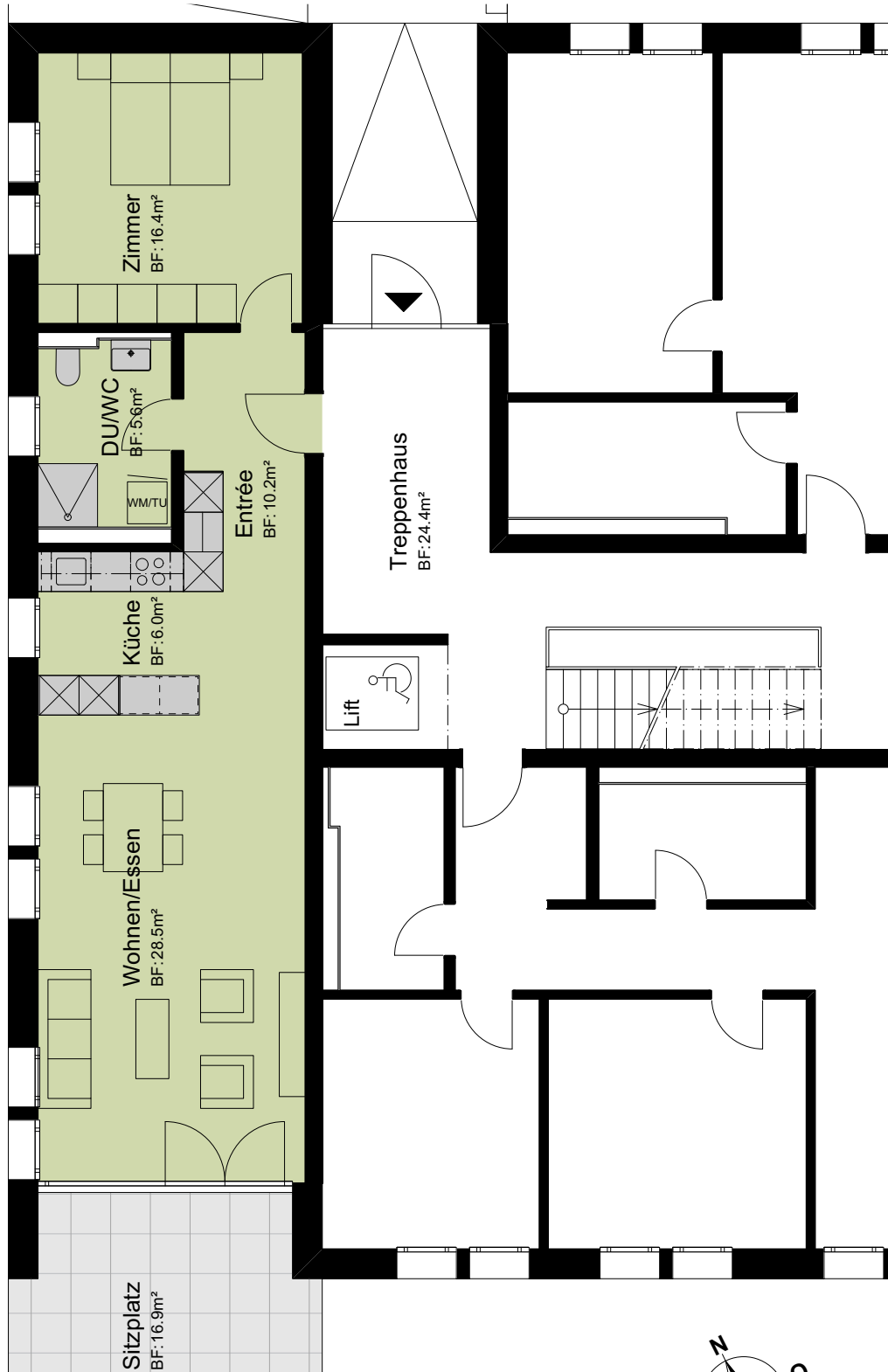


WHG 9
WHG 6
WHG 3
UG Links
UG Rechts

MEHRFAMILIENHAUS
BOESINGENSTRASSE
3177 LAUPEN
2.5 ZIMMER

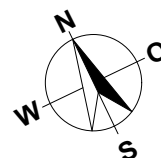
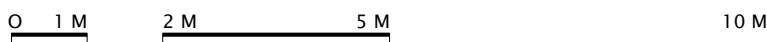
WOHNUNG: WHG 3, EG
 KELLER: 8.0 m²
 SITZPLATZ: 17.0 m²
 NETTOWOHNFLÄCHE: 67.0 m²



MASSTAB 1:100

MEHRFAMILIENHAUS
BOESINGENSTRASSE
3177 LAUPEN

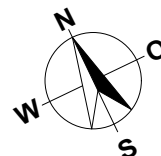
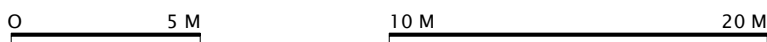
UNTERGESCHOSS RECHTS

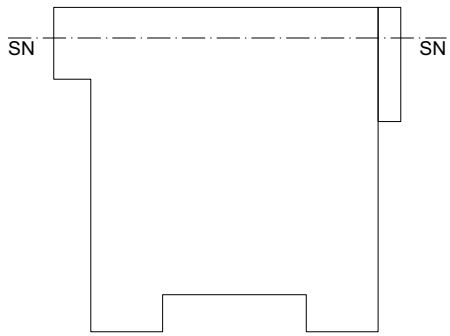


MASSTAB 1:100

MEHRFAMILIENHAUS
BOESINGENSTRASSE
3177 LAUPEN

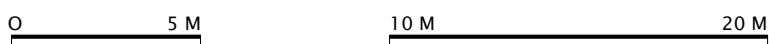
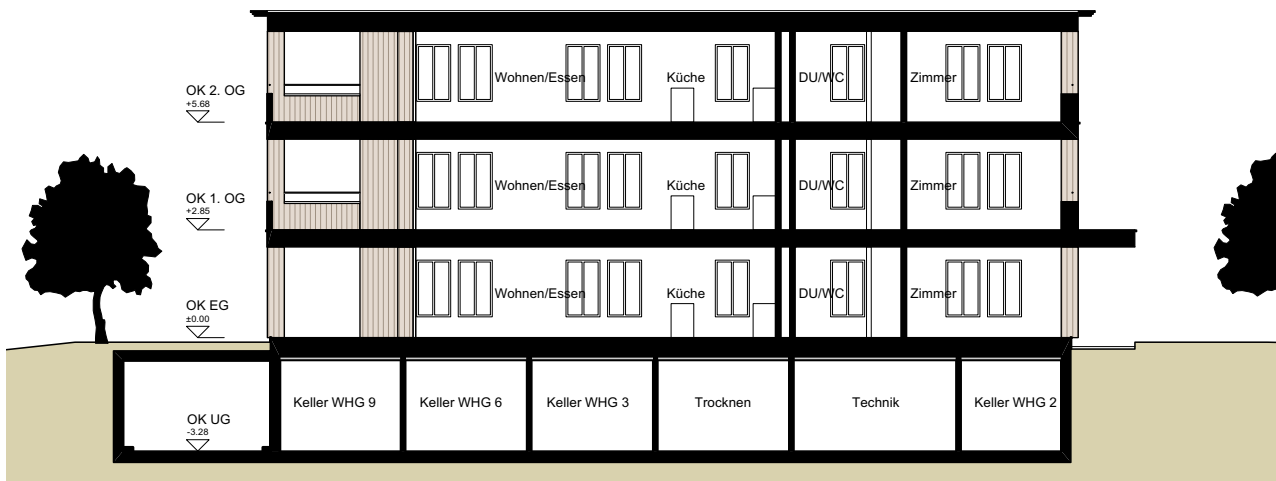
EINSTELLHALLE / KELLER



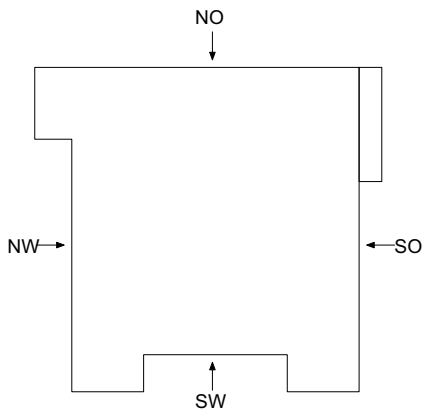


MEHRFAMILIENHAUS
BOESINGENSTRASSE
3177 LAUPEN

SCHNITT



MASSTAB 1:200



MEHRFAMILIENHAUS
BOESINGENSTRASSE
3177 LAUPEN

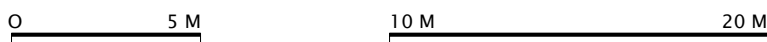
FASSADEN



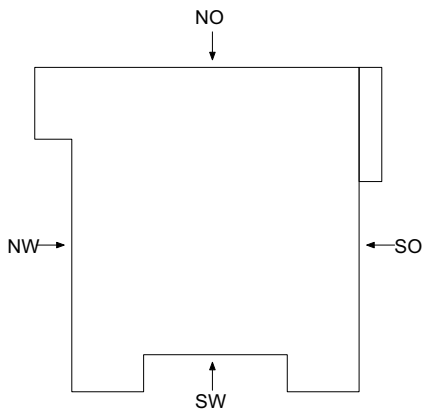
Nordwestfassade



Südwestfassade

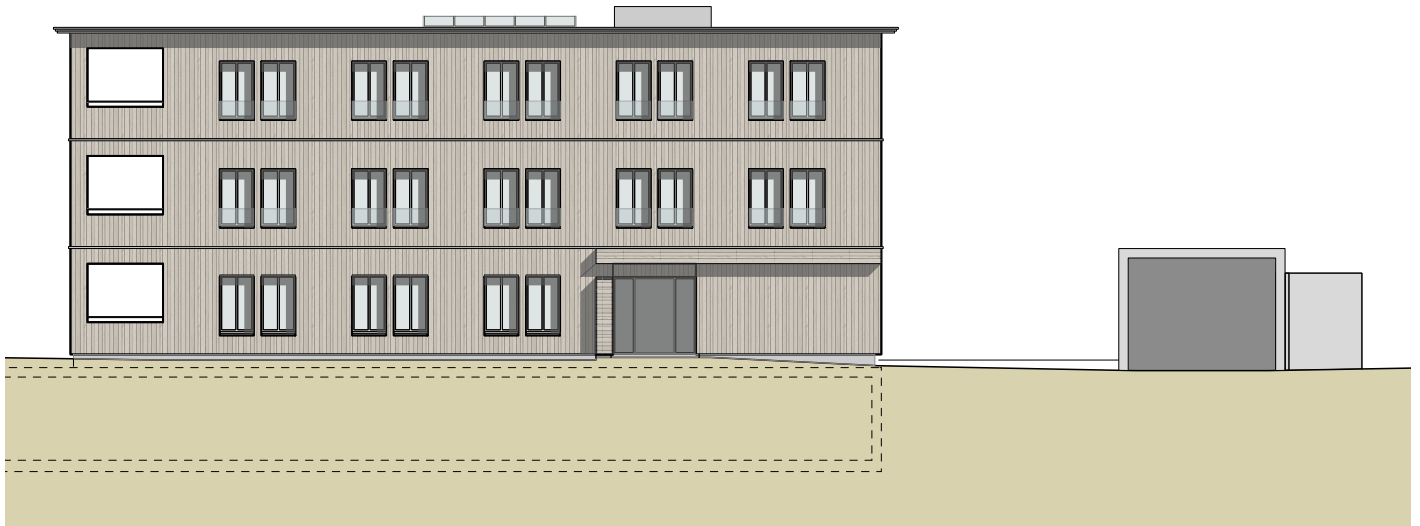


MASSTAB 1:200



MEHRFAMILIENHAUS
BOESINGENSTRASSE
3177 LAUPEN

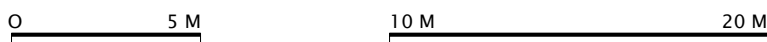
FASSADEN



Südostfassade



Nordostfassade



MASSTAB 1:200