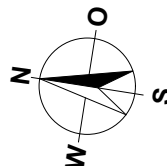
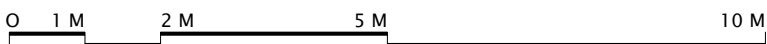
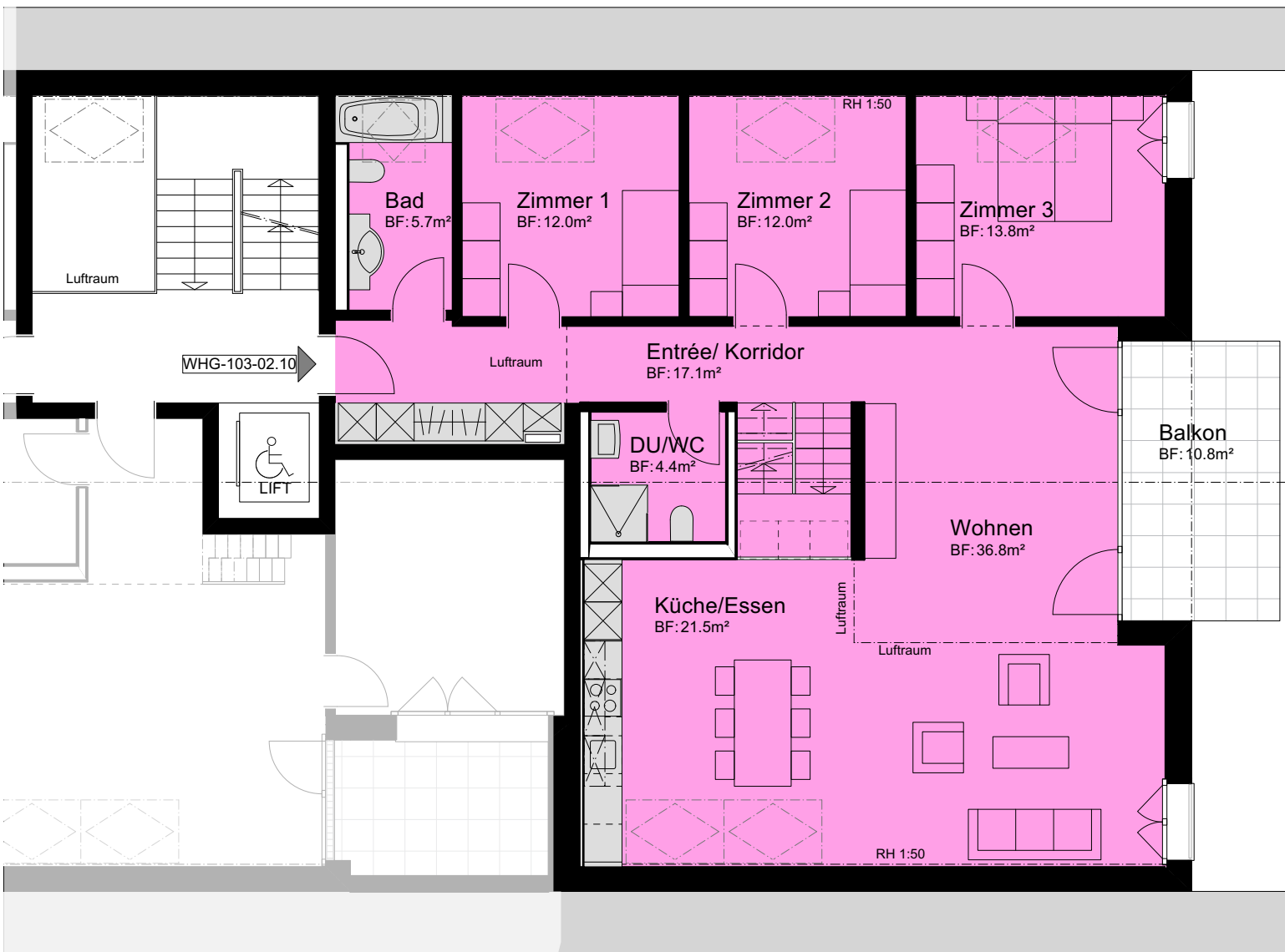
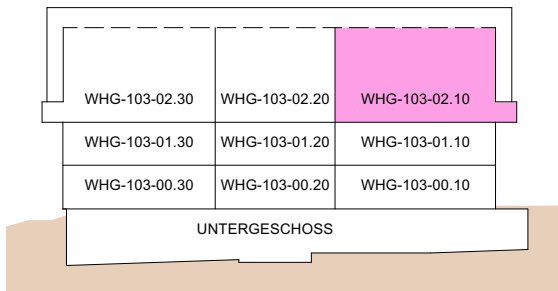


**MEHRFAMILIENHAUS  
ZILMATTSTRASSE 103  
3255 RAPPERSWIL (BE)  
4.5 ZIMMER**

**WOHNUNG:** WHG-103-02.10, Galerie  
**KELLER:** 16.5 m<sup>2</sup>  
**BALKON:** 11.0 m<sup>2</sup>  
**NETTOWOHNFLÄCHE DG:** 123.5 m<sup>2</sup>  
**NETTOWOHNFLÄCHE GALERIE:** 35.5 m<sup>2</sup>  
**NETTOWOHNFLÄCHE TOTAL:** 159.0 m<sup>2</sup>

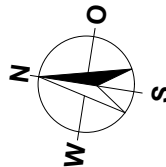
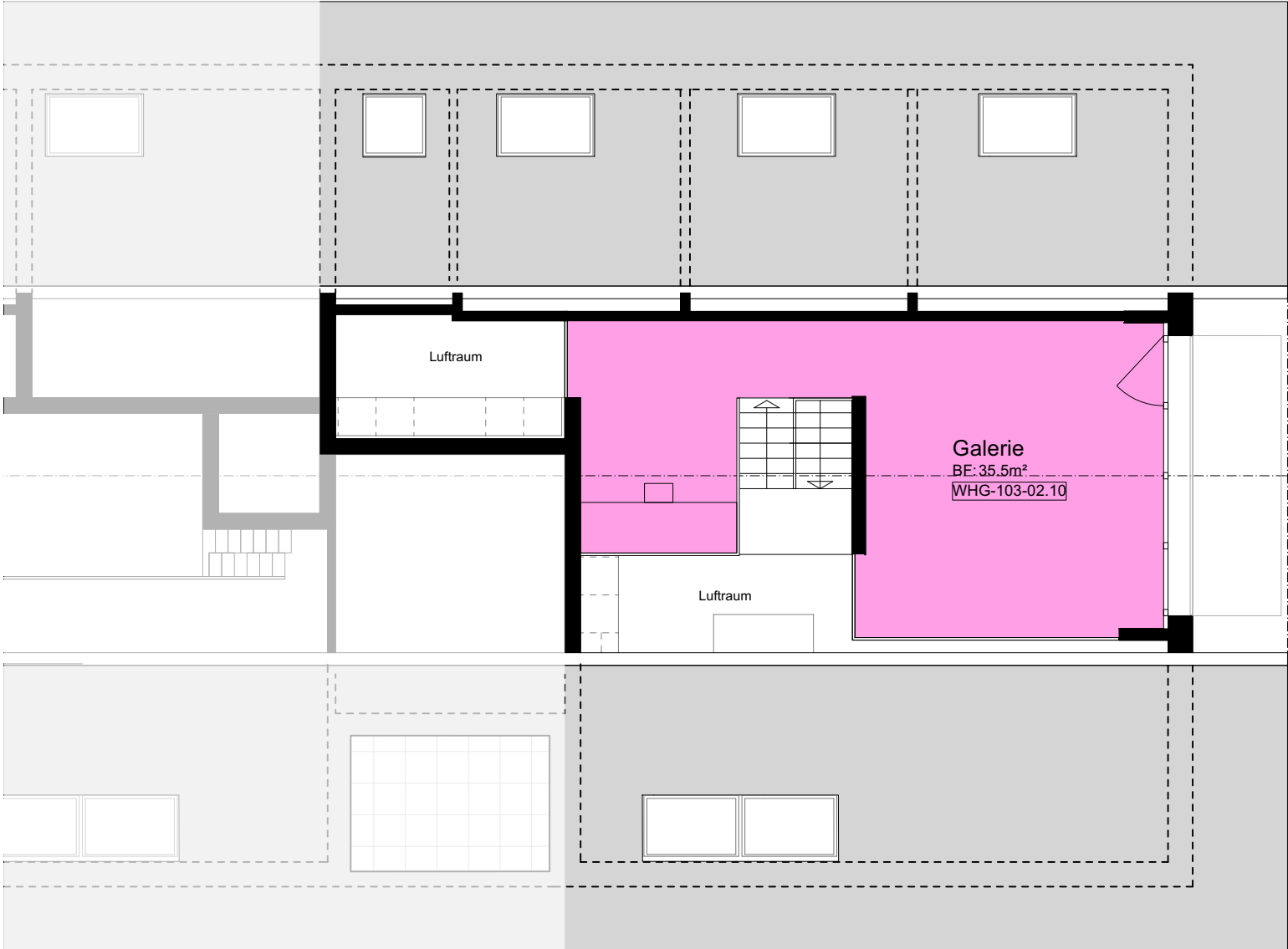


MASSTAB 1:100



**MEHRFAMILIENHAUS  
ZILMATTSTRASSE 103  
3255 RAPPERSWIL (BE)  
4.5 ZIMMER**

**WOHNUNG:** WHG-103-02.10, Galerie  
**KELLER:** 16.5 m<sup>2</sup>  
**BALKON:** 11.0 m<sup>2</sup>  
**NETTOWOHNFLÄCHE DG:** 123.5 m<sup>2</sup>  
**NETTOWOHNFLÄCHE GALERIE:** 35.5 m<sup>2</sup>  
**NETTOWOHNFLÄCHE TOTAL:** 159.0 m<sup>2</sup>

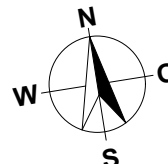


MASSTAB 1:100

WHG-103-02.30	WHG-103-02.20	WHG-103-02.10
WHG-103-01.30	WHG-103-01.20	WHG-103-01.10
WHG-103-00.30	WHG-103-00.20	WHG-103-00.10
UNTERGESCHOSS		

MEHRFAMILIENHAUS  
ZILMATTSTRASSE 103  
3255 RAPPERSWIL (BE)

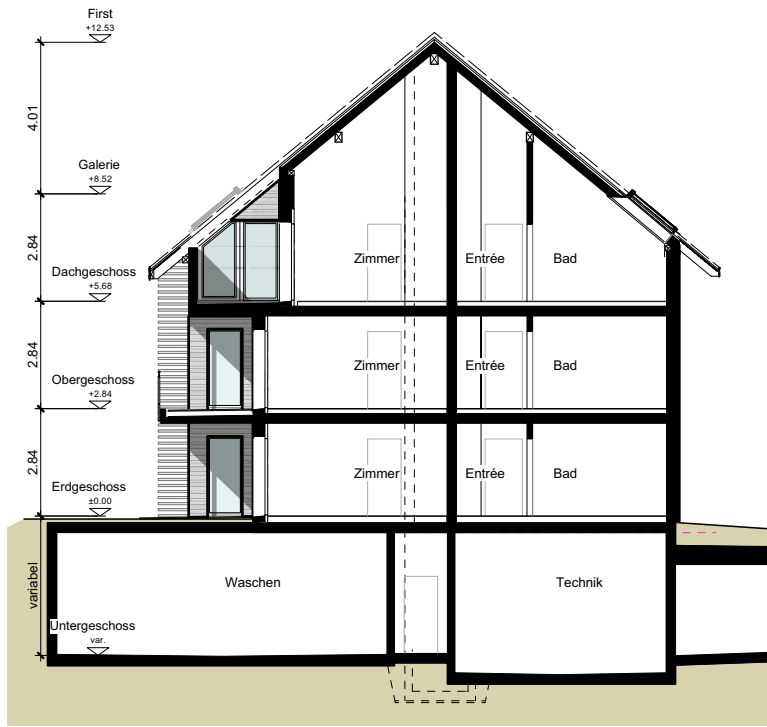
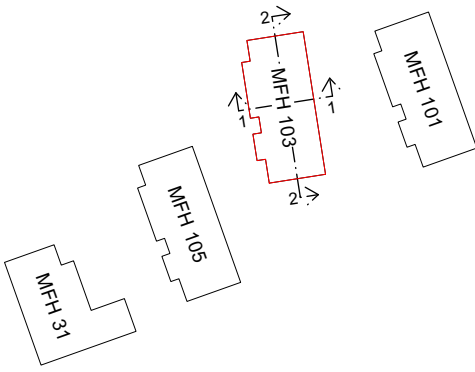
HAUS 103  
UNTERGESCHOSS



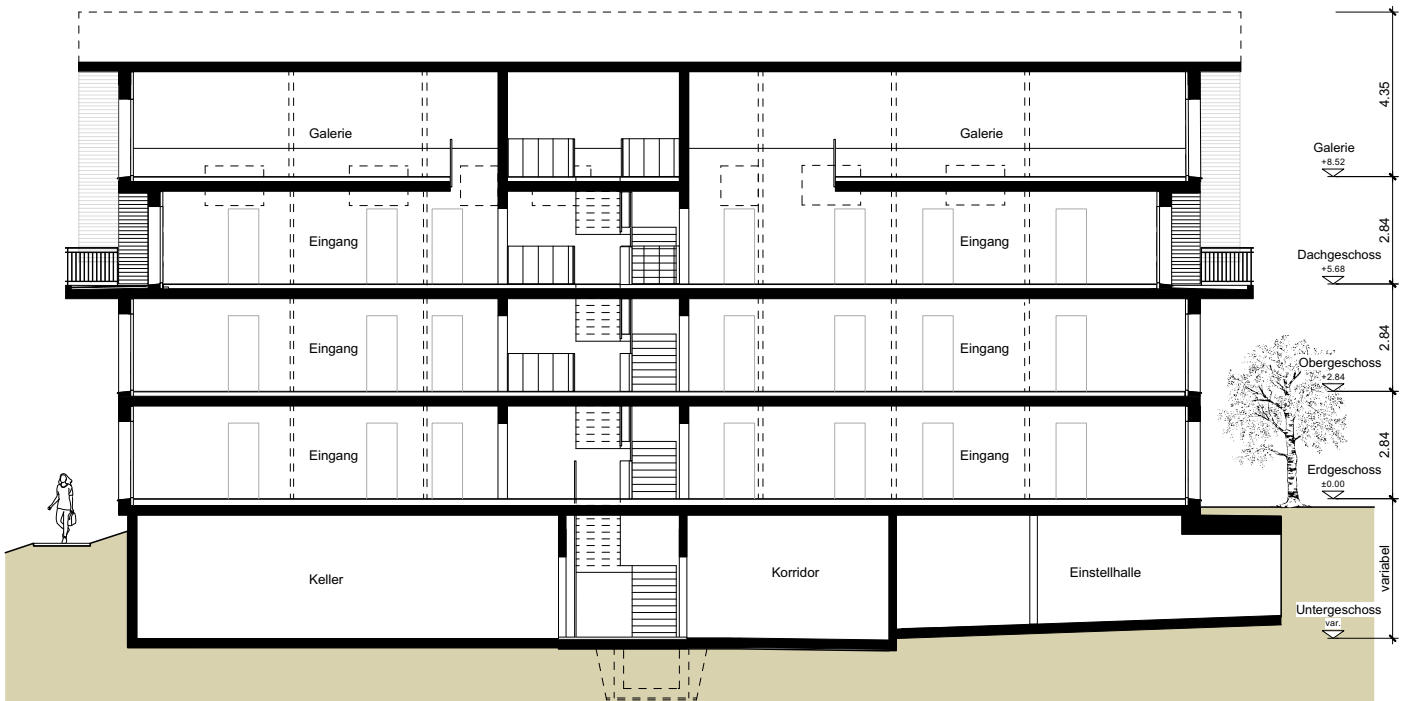
MASSTAB 1:150

MEHRFAMILIENHAUS  
ZILMATTSTRASSE 103  
3255 RAPPERSWIL (BE)

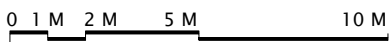
HAUS 103  
SCHNITTE



SCHNITT 1-1



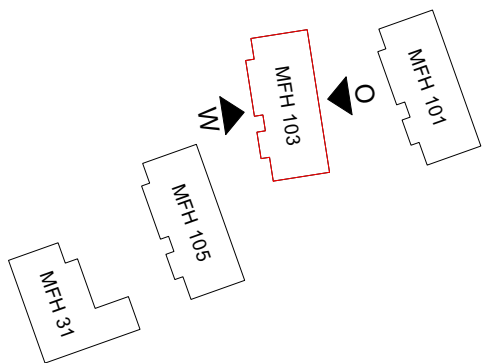
SCHNITT 2-2



MASSTAB 1:200

MEHRFAMILIENHAUS  
ZILMATTSTRASSE 103  
3255 RAPPERSWIL (BE)

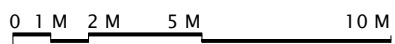
HAUS 103  
FASSADEN



OSTEN



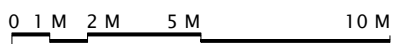
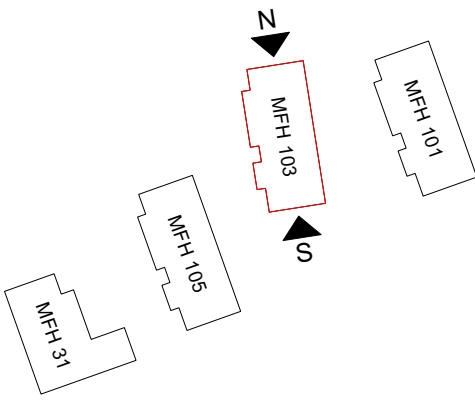
WESTEN



MASSTAB 1:200

MEHRFAMILIENHAUS  
ZILMATTSTRASSE 103  
3255 RAPPERSWIL (BE)

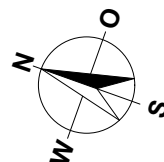
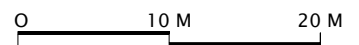
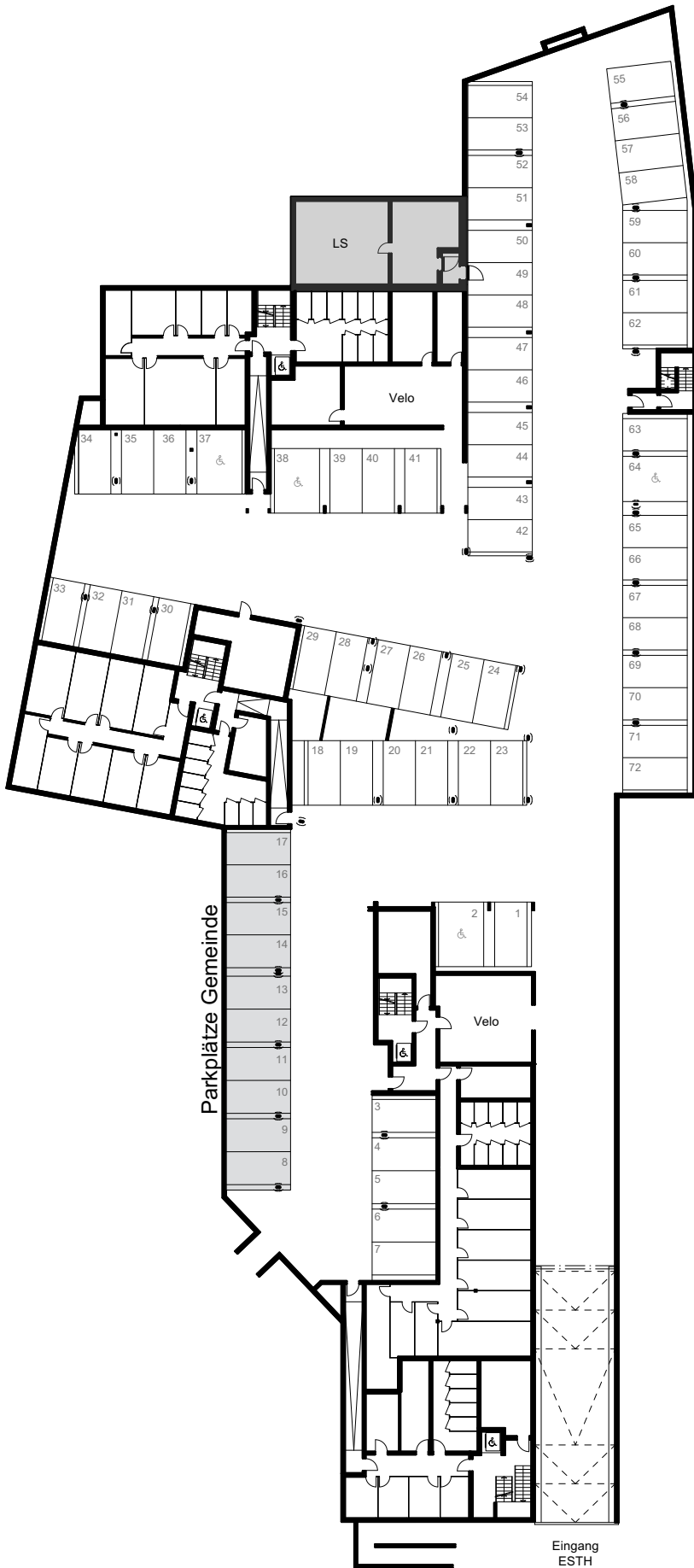
HAUS 103  
FASSADEN



MASSTAB 1:200

MEHRFAMILIENHÄUSER  
HAUPTSTRASSE 31  
ZILMATTSTRASSE 101, 103 UND 105  
3255 RAPPERSWIL (BE)

SITUATION / UNTERGESCHOSS / ESTH



MASSSTAB 1:500