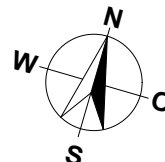
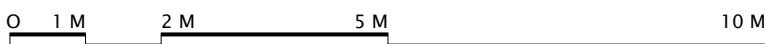


| | | |
|----|----------|-----------|
| | WHG A32 | WHG A31 |
| | WHG A22 | WHG A21 |
| | WHG A12 | WHG A11 |
| | WHG A02 | WHG A01 |
| EH | UG links | UG rechts |

3 MEHRFAMILIENHÄUSER
NEBIKERSTRASSE
6247 SCHÖTZ
3.5 ZIMMER

WOHNUNG: WHG A02, EG
 KELLER: 9.0 m²
 SITZPLATZ: 33.0 m²
 NETTOWOHNFLÄCHE: 105.0 m²

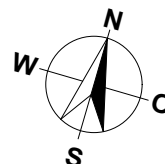
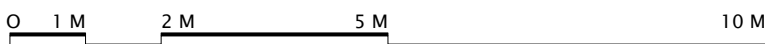
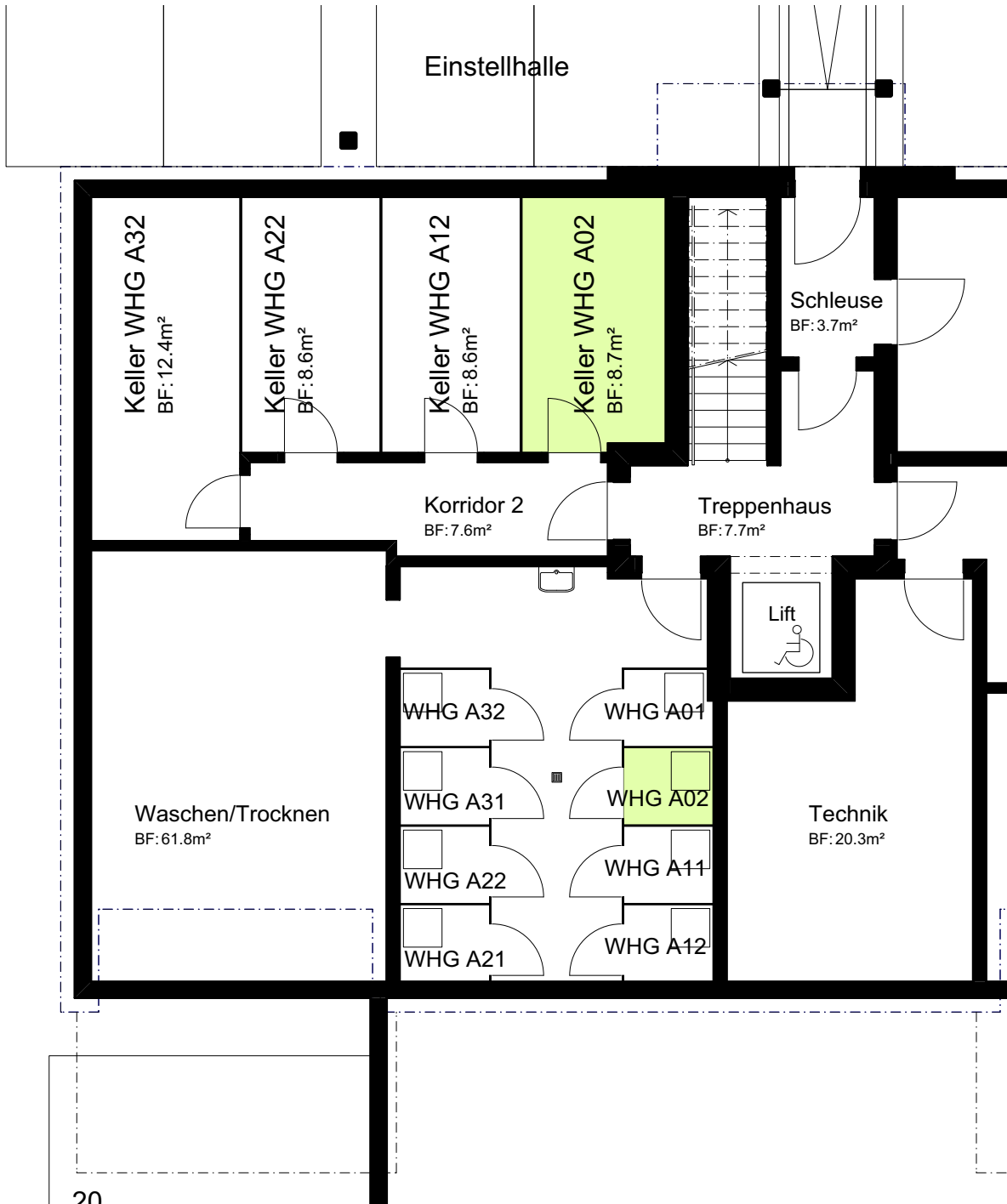


MASSTAB 1:100

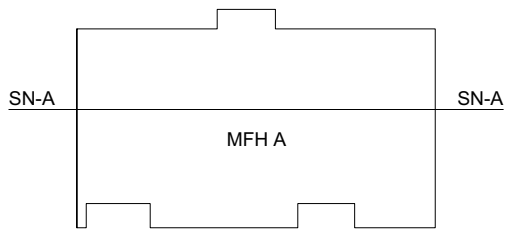
| | | |
|----|----------|-----------|
| | WHG A32 | WHG A31 |
| | WHG A22 | WHG A21 |
| | WHG A12 | WHG A11 |
| | WHG A02 | WHG A01 |
| EH | UG links | UG rechts |

3 MEHRFAMILIENHÄUSER
NEBIKERSTRASSE
6247 SCHÖTZ

UNTERGESCHOSS MFH A

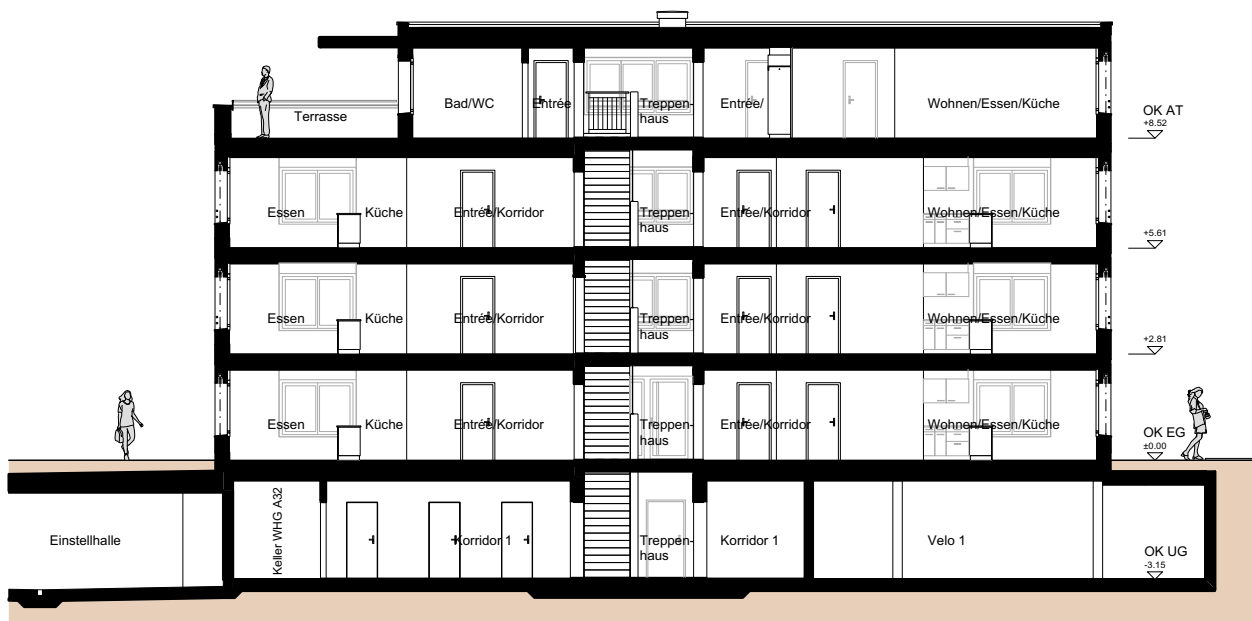


MASSTAB 1:100

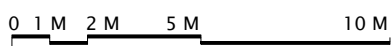


3 MEHRFAMILIENHÄUSER
NEBIKERSTRASSE
6247 SCHÖTZ

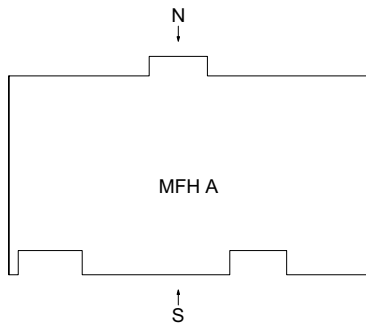
SCHNITT A-A



Schnitt A-A



MASSTAB 1:200

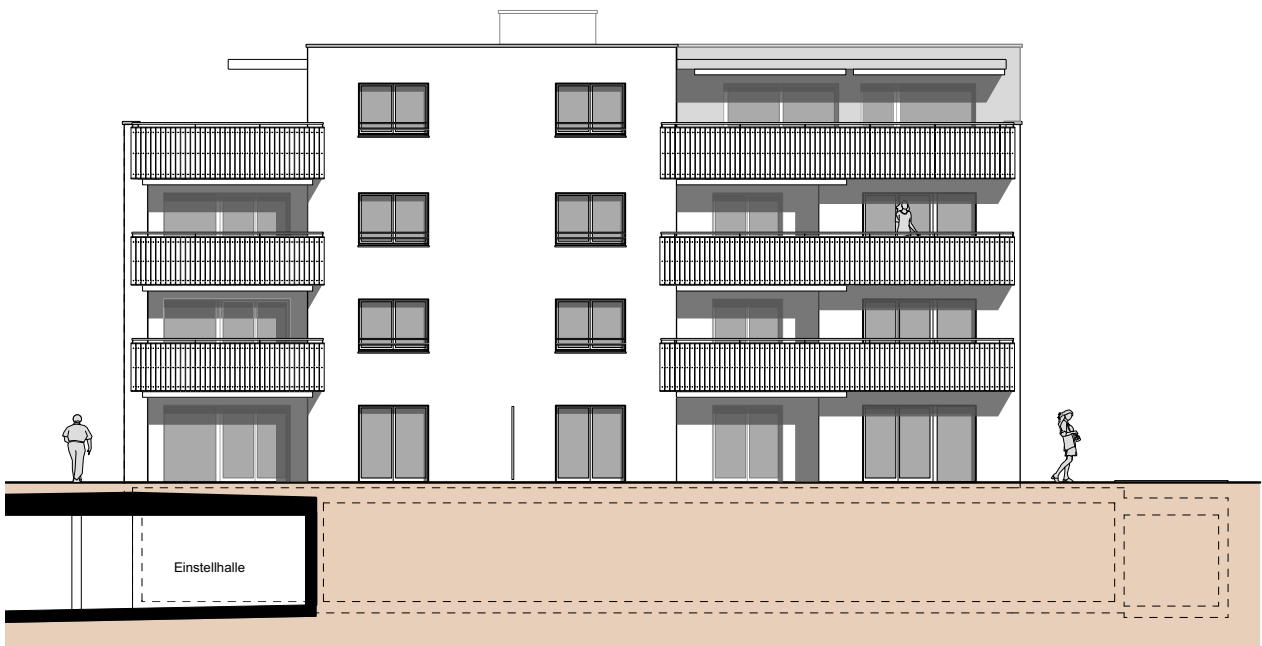


3 MEHRFAMILIENHÄUSER
NEBIKERSTRASSE
6247 SCHÖTZ

FASSADEN



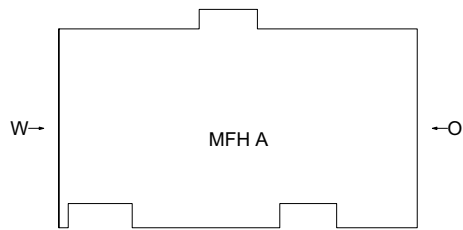
Nordfassade



Südfassade

0 1 M 2 M 5 M 10 M

MASSSTAB 1:200

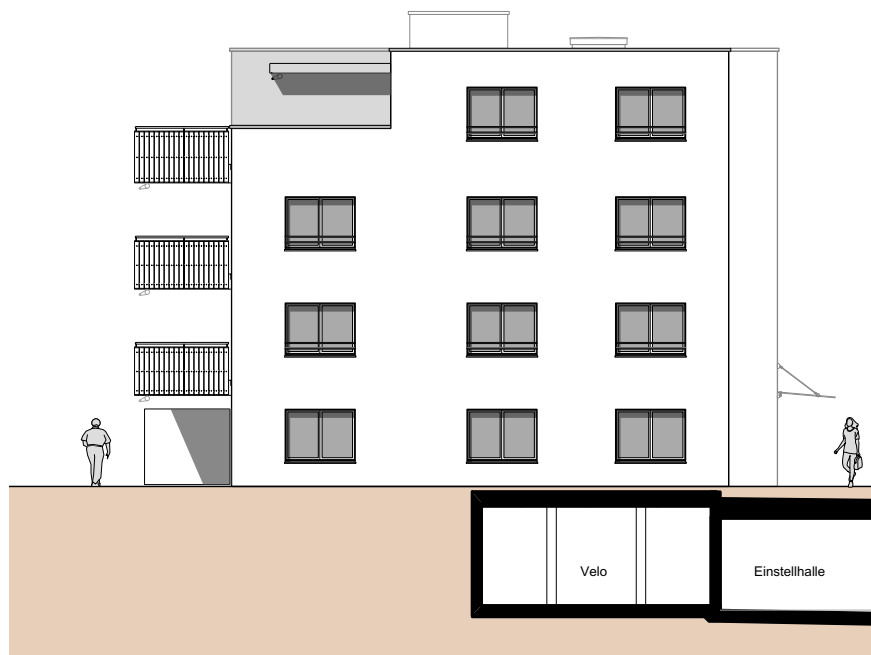


3 MEHRFAMILIENHÄUSER
NEBIKERSTRASSE
6247 SCHÖTZ

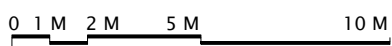
FASSADEN



Westfassade



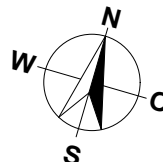
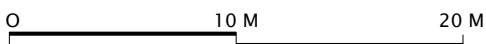
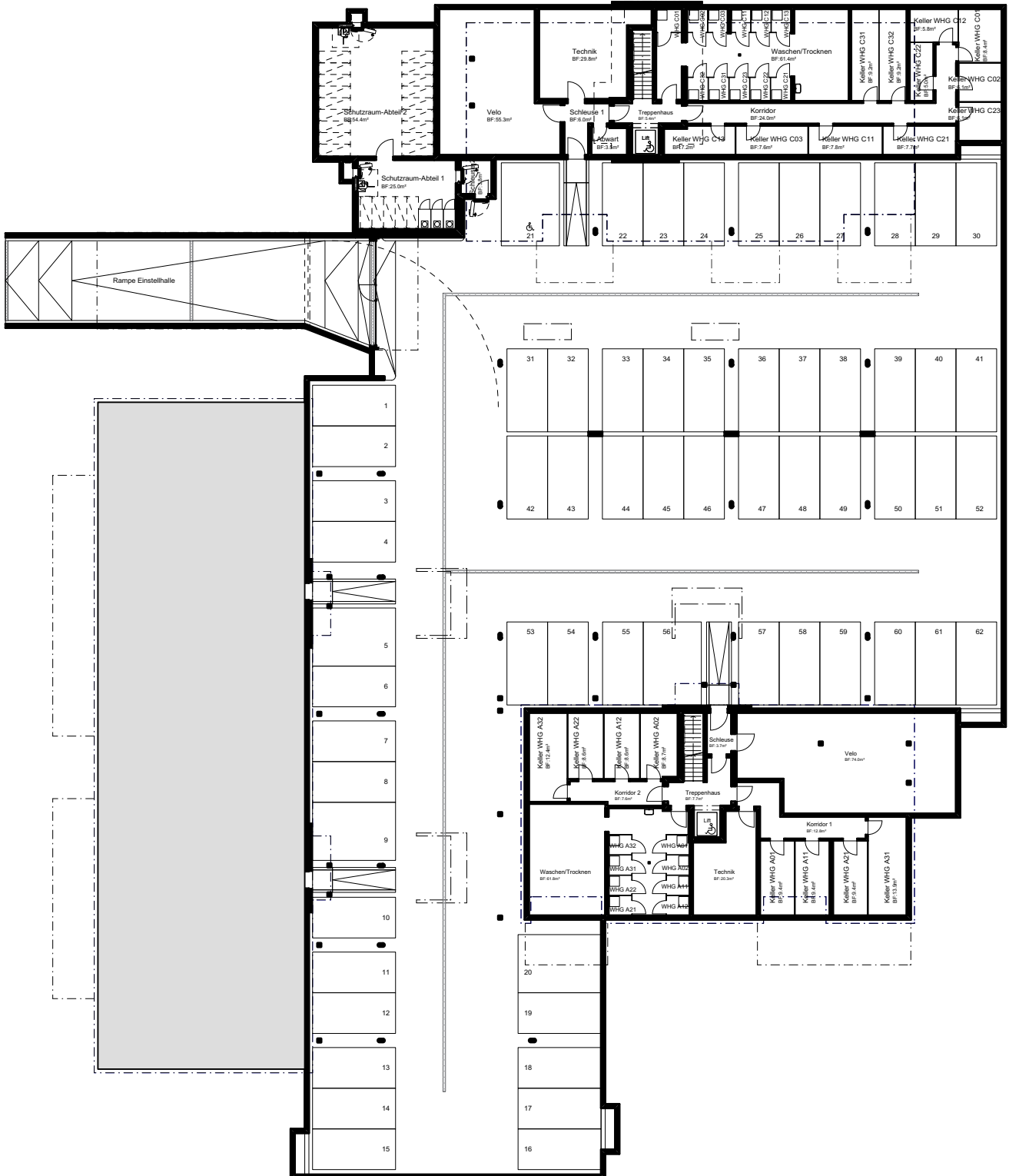
Ostfassade



MASSTAB 1:200

3 MEHRFAMILIENHÄUSER NEBIKERSTRASSE 6247 SCHÖTZ

EINSTELLHALLE



MASSTAB 1:350