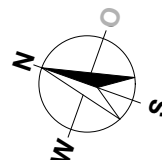
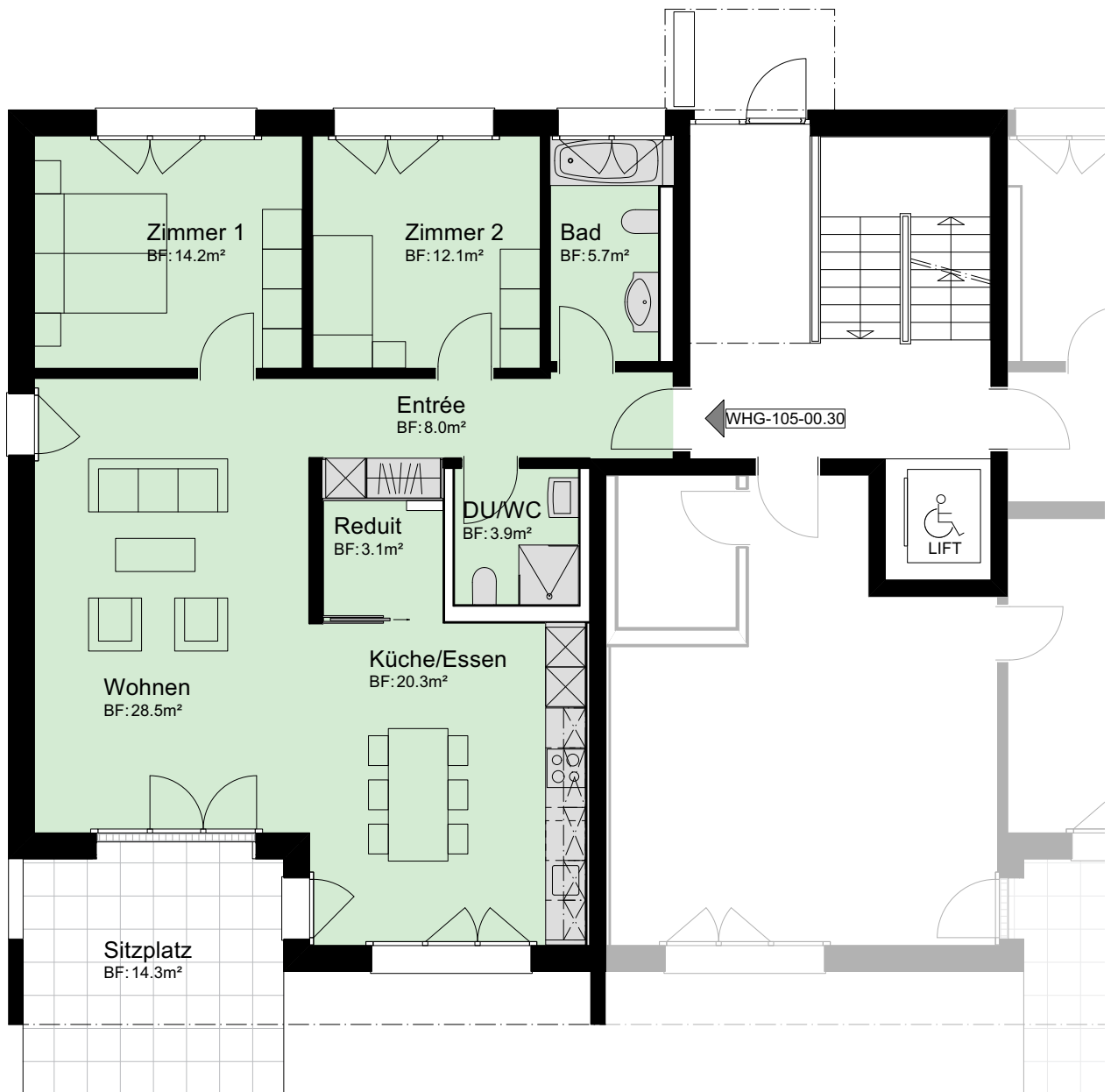
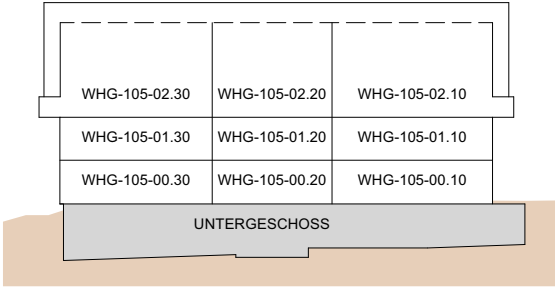


**MEHRFAMILIENHAUS
ZILMATTSTRASSE 105
3255 RAPPERSWIL (BE)
3.5 ZIMMER**

WOHNUNG: WHG-105-00.30, EG
KELLER: 13.5 m²
SITZPLATZ: 14.5 m²
NETTOWOHNFLÄCHE: 96.0 m²

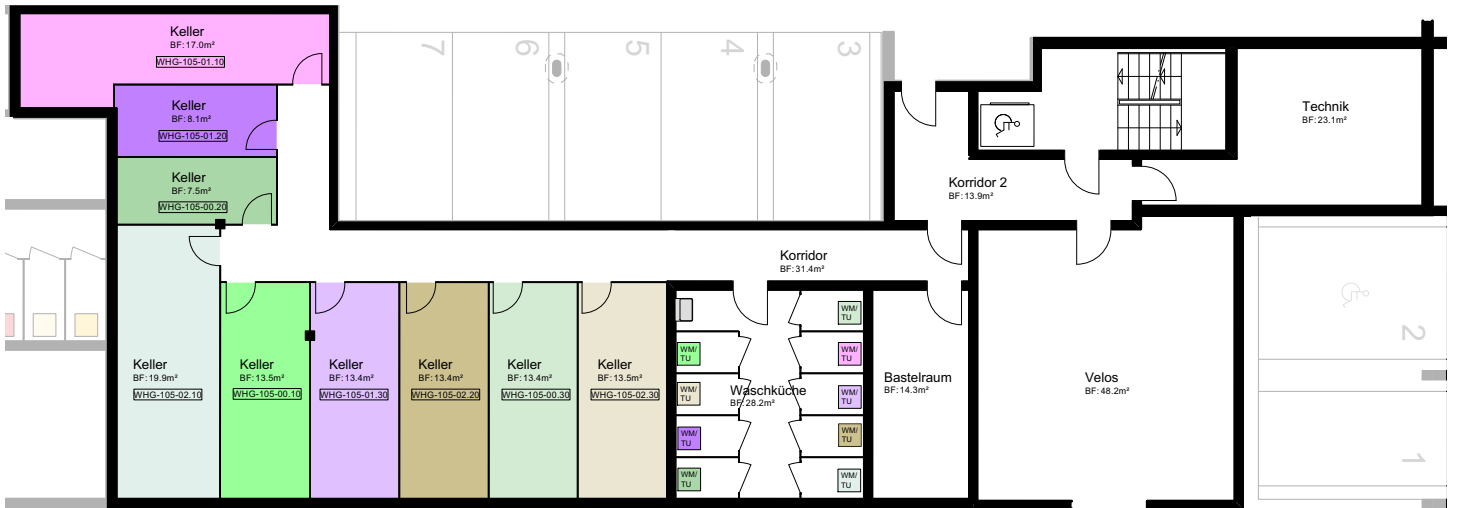


MASSTAB 1:100

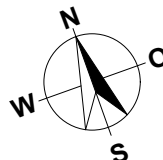


MEHRFAMILIENHAUS
ZILMATTSTRASSE 105
3255 RAPPERSWIL (BE)

HAUS 105
UNTERGESCHOSS



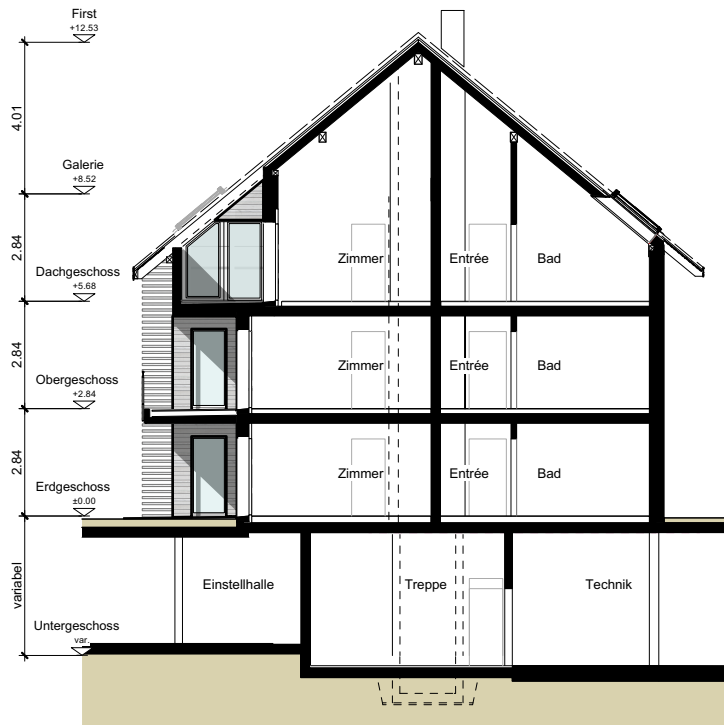
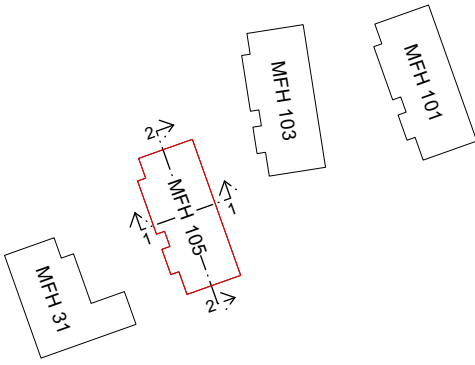
0 1 M 2 M 5 M 10 M



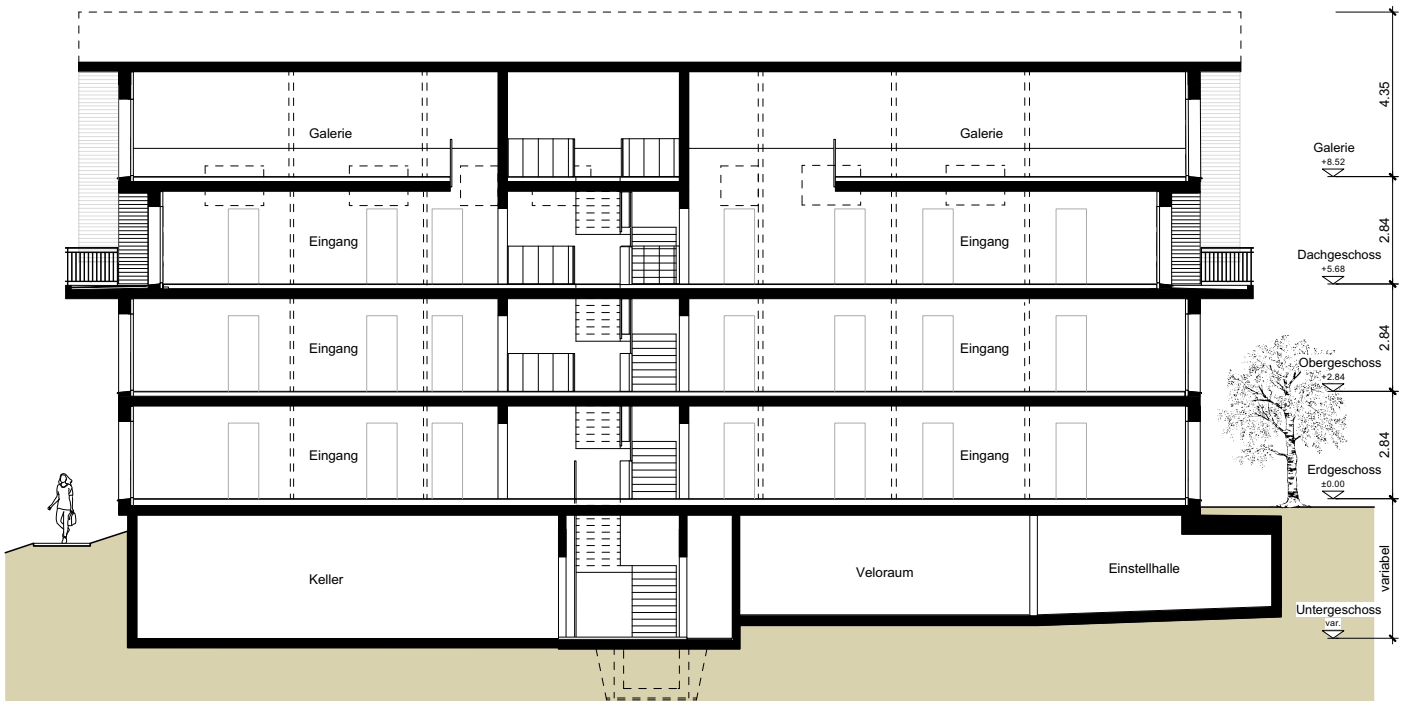
MASSTAB 1:200

MEHRFAMILIENHAUS
ZILMATTSTRASSE 105
3255 RAPPERSWIL (BE)

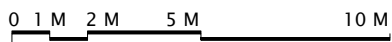
HAUS 105
SCHNITTE



SCHNITT 1-1



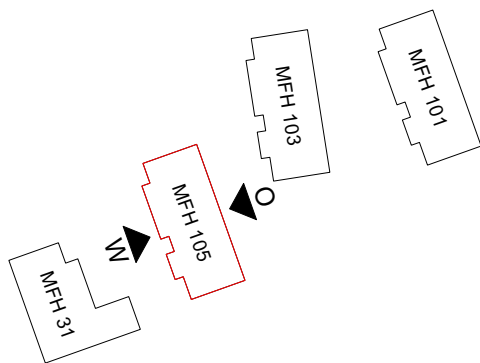
SCHNITT 2-2



MASSTAB 1:200

MEHRFAMILIENHAUS
ZILMATTSTRASSE 105
3255 RAPPERSWIL (BE)

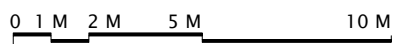
HAUS 105
FASSADEN



OSTEN



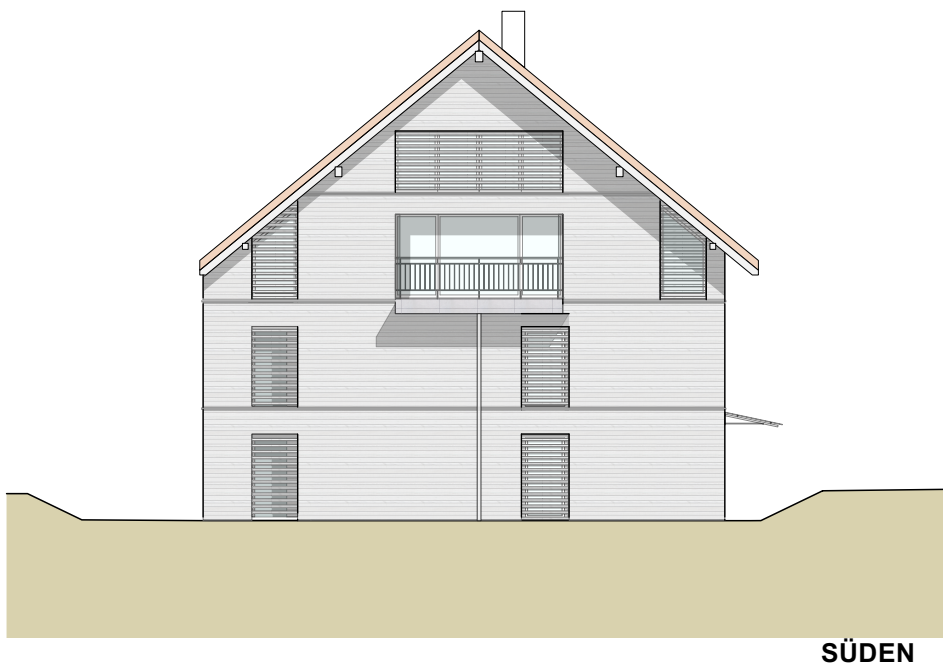
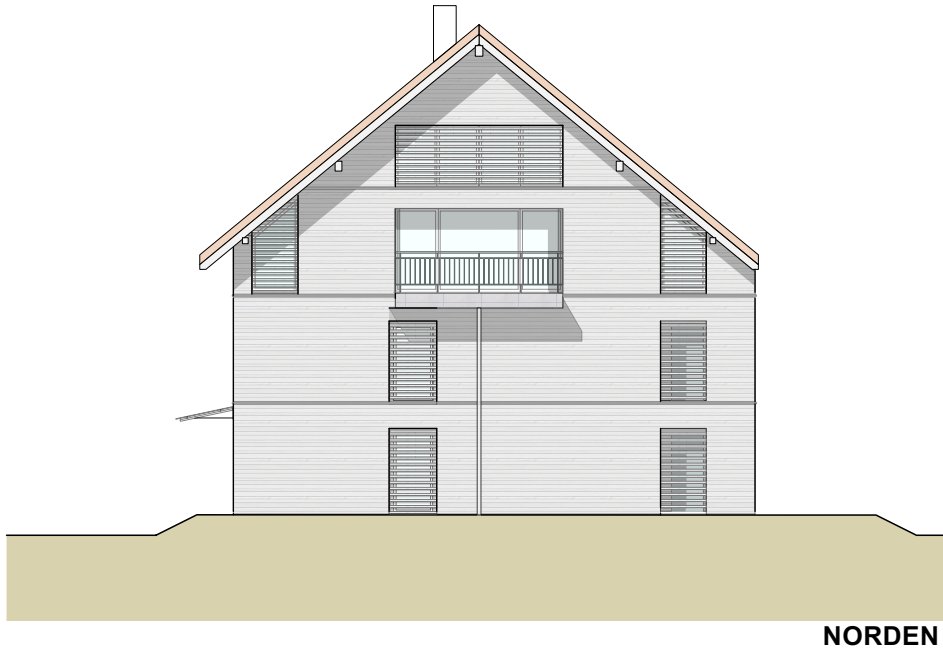
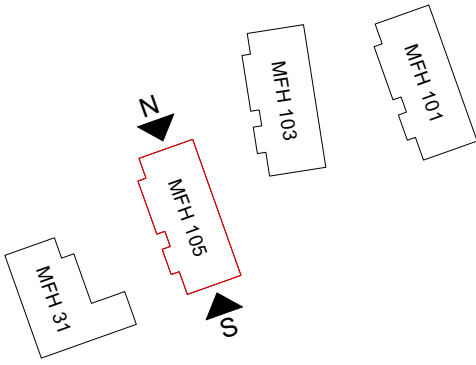
WESTEN



MASSTAB 1:200

MEHRFAMILIENHAUS
ZILMATTSTRASSE 105
3255 RAPPERSWIL (BE)

HAUS 105
FASSADEN

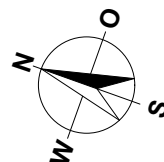
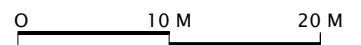


0 1 M 2 M 5 M 10 M

MASSTAB 1:200

MEHRFAMILIENHÄUSER
HAUPTSTRASSE 31
ZILMATTSTRASSE 101, 103 UND 105
3255 RAPPERSWIL (BE)

SITUATION / UNTERGESCHOSS / ESTH



MASSSTAB 1:500