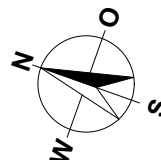
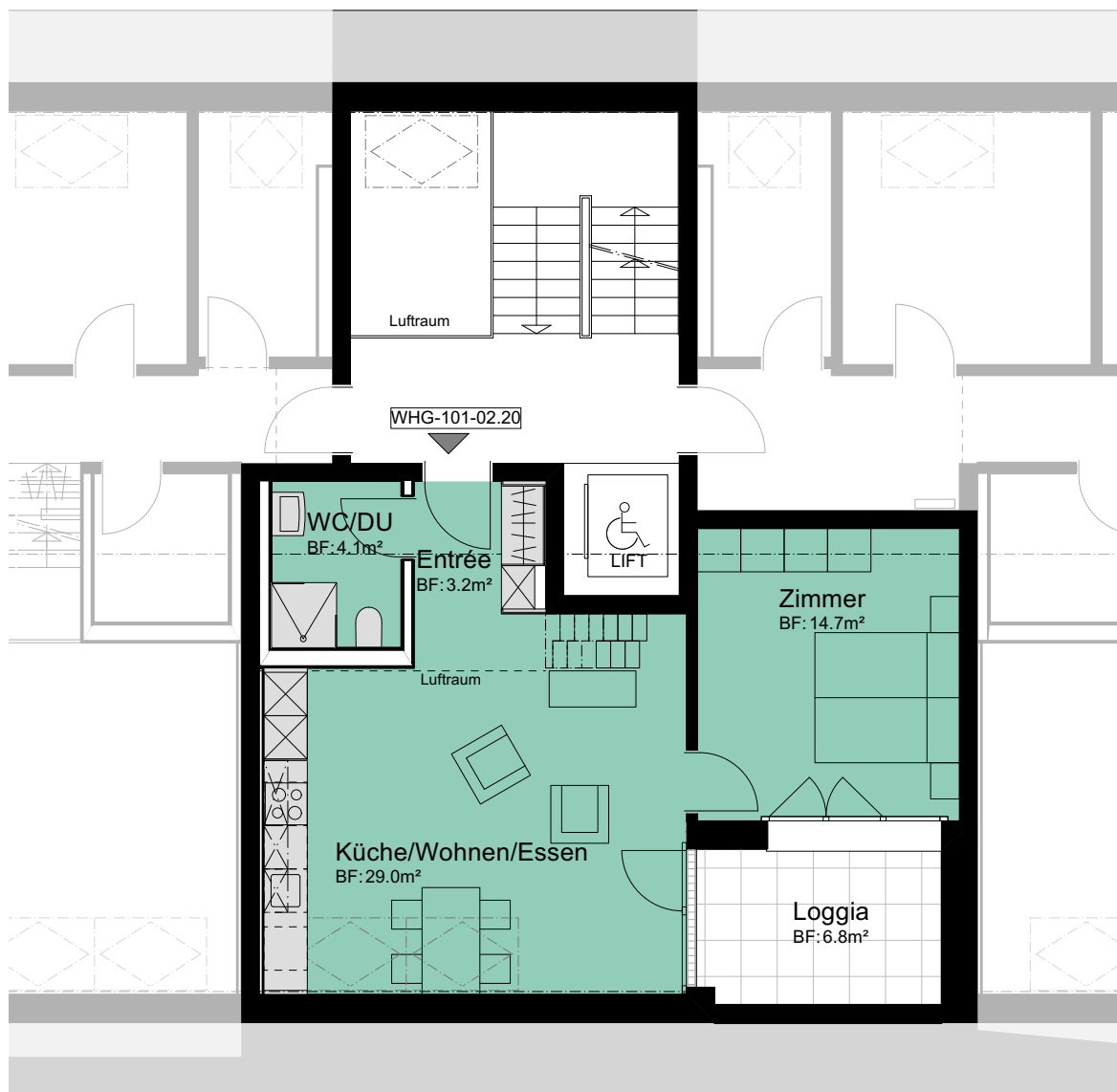
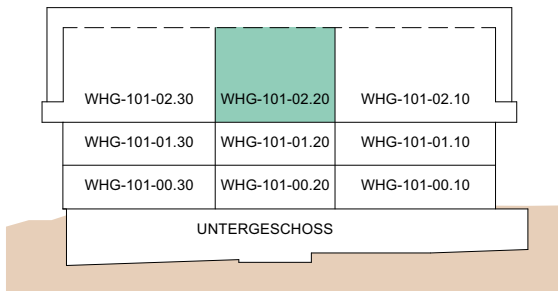


**MEHRFAMILIENHAUS  
ZILMATTSTRASSE 101  
3255 RAPPERSWIL (BE)  
2.5 ZIMMER**

**WOHNUNG:** WHG-101-02.20, OG  
**KELLER:** 7.0 m<sup>2</sup>  
**LOGGIA:** 7.0 m<sup>2</sup>  
**NETTOWOHNFLÄCHE DG:** 51.0 m<sup>2</sup>  
**NETTOWOHNFLÄCHE GALERIE:** 10.0 m<sup>2</sup>  
**NETTOWOHNFLÄCHE TOTAL:** 61.0 m<sup>2</sup>

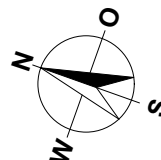
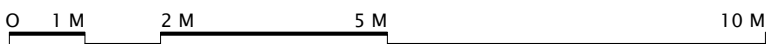
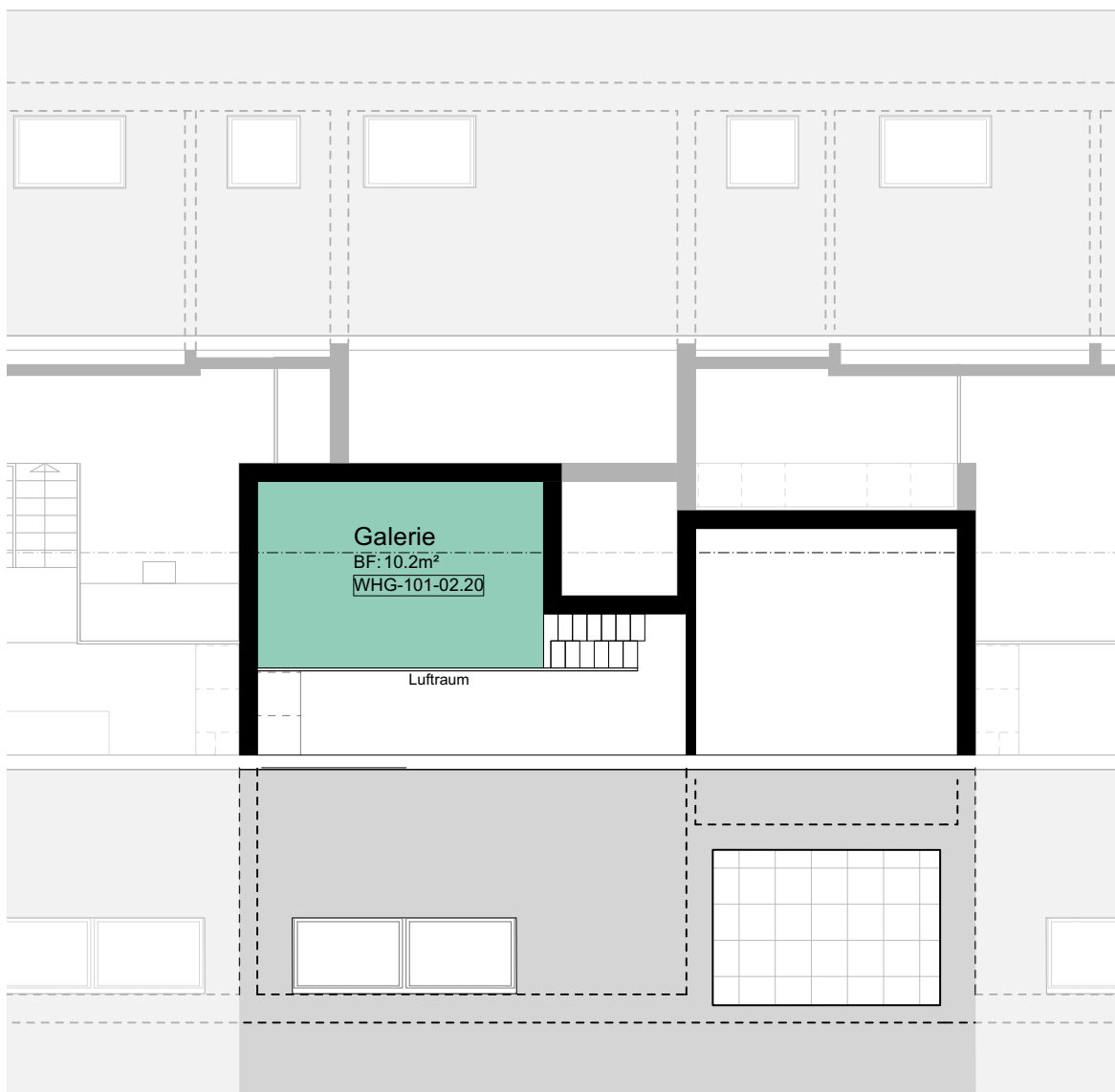


MASSSTAB 1:100

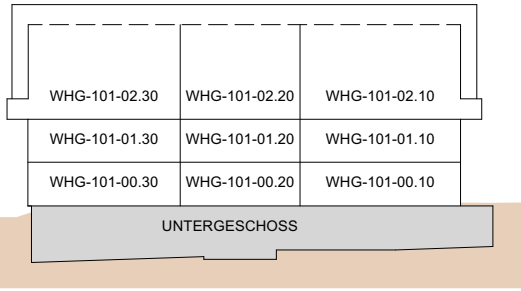


MEHRFAMILIENHAUS  
 ZILMATTSTRASSE 101  
 3255 RAPPERSWIL (BE)  
 2.5 ZIMMER

WOHNUNG: WHG-101-02.20, Galerie  
 KELLER: 7.0 m<sup>2</sup>  
 LOGGIA: 7.0 m<sup>2</sup>  
 NETTOWOHNFLÄCHE DG: 51.0 m<sup>2</sup>  
 NETTOWOHNFLÄCHE GALERIE: 10.0 m<sup>2</sup>  
 NETTOWOHNFLÄCHE TOTAL: 61.0 m<sup>2</sup>

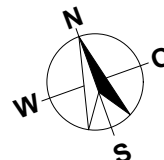
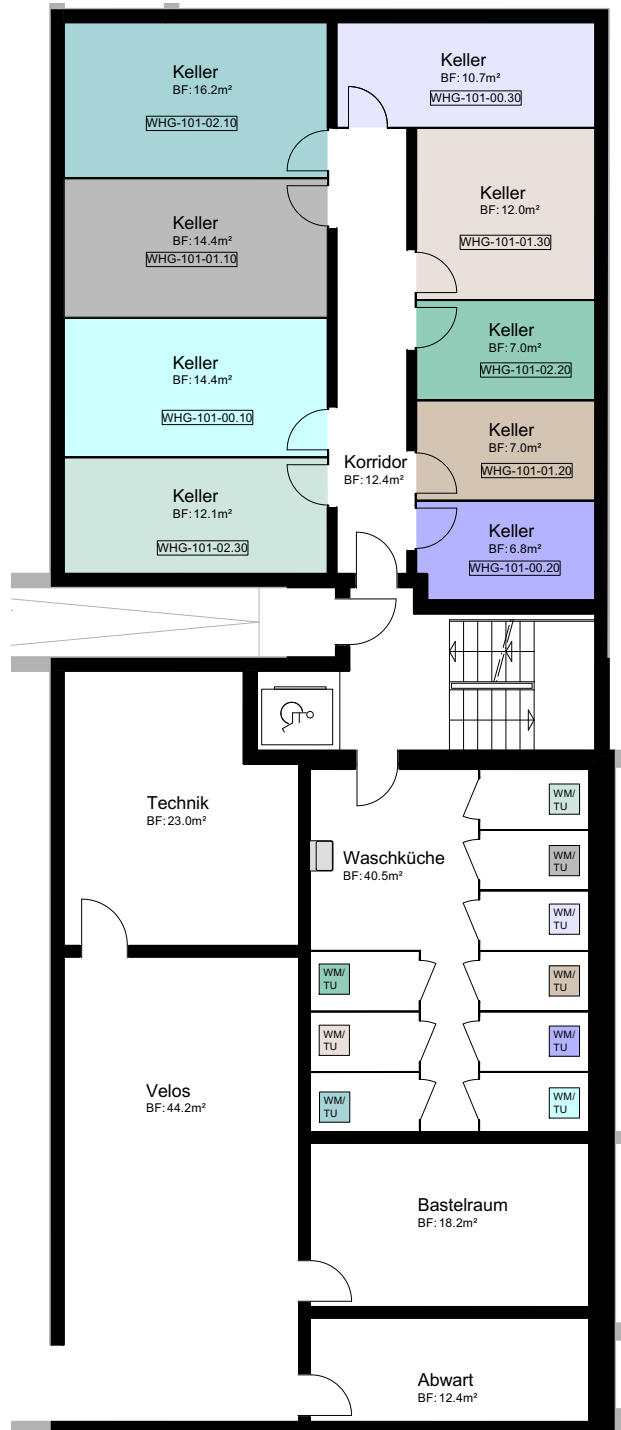


MASSTAB 1:100



MEHRFAMILIENHAUS  
ZILMATTSTRASSE 101  
3255 RAPPERSWIL (BE)

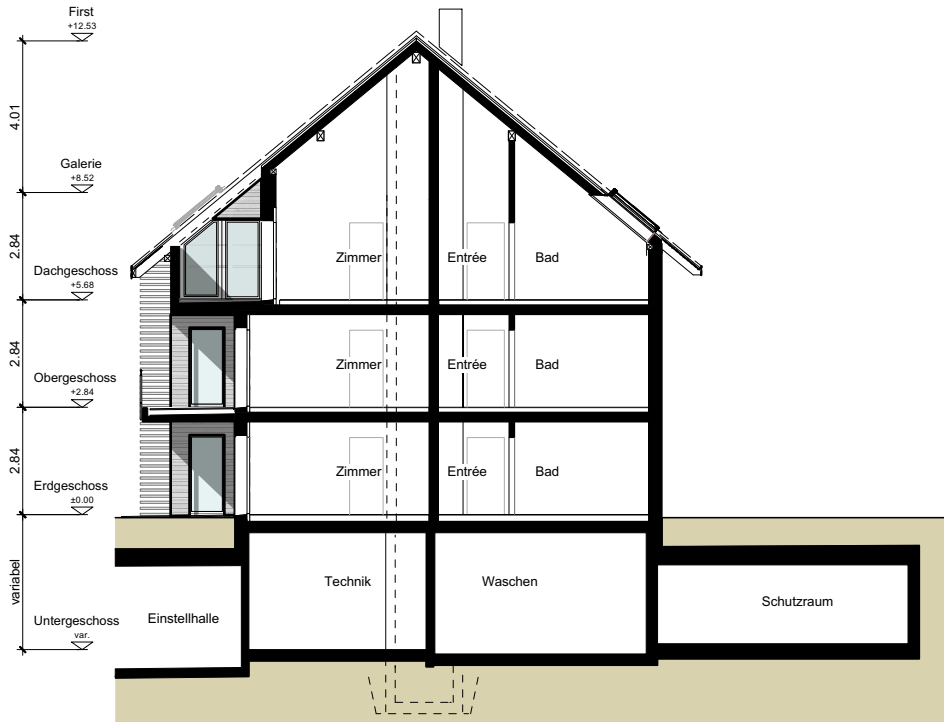
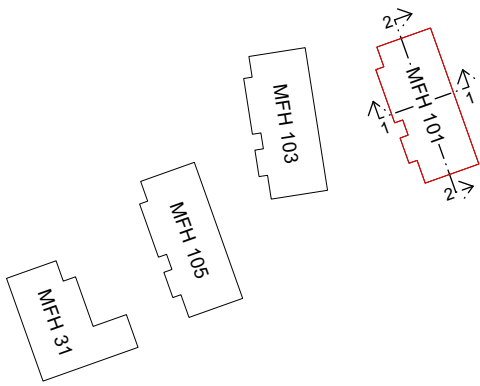
HAUS 101  
UNTERGESCHOSS



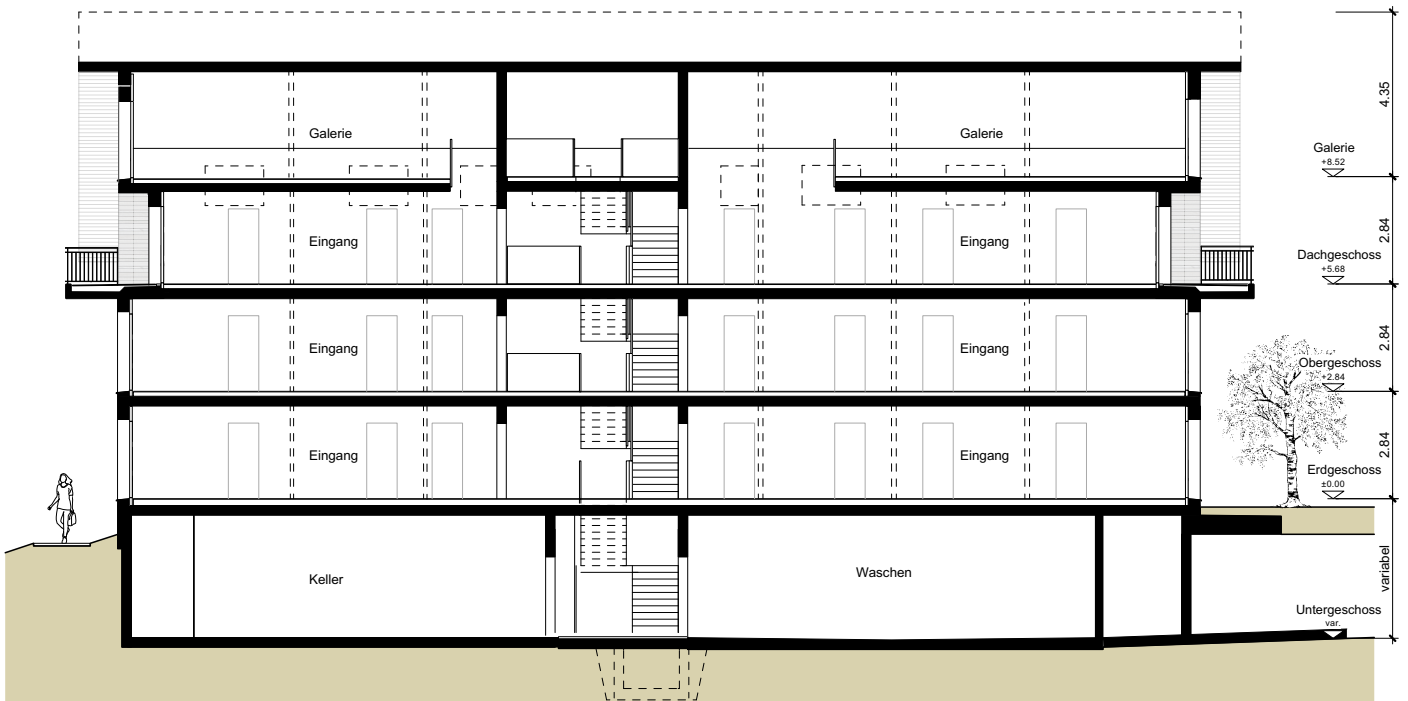
MASSTAB 1:150

MEHRFAMILIENHAUS  
ZILMATTSTRASSE 101  
3255 RAPPERSWIL (BE)

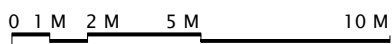
HAUS 101  
SCHNITTE



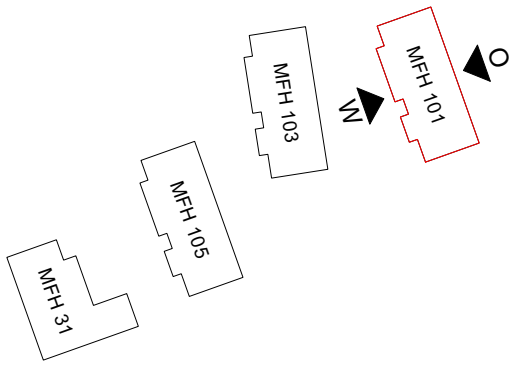
SCHNITT 1-1



SCHNITT 2-2



MASSTAB 1:200



MEHRFAMILIENHAUS  
 ZILMATTSTRASSE 101  
 3255 RAPPERSWIL (BE)

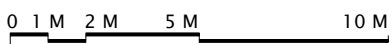
HAUS 101  
 FASSADEN



OSTEN



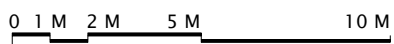
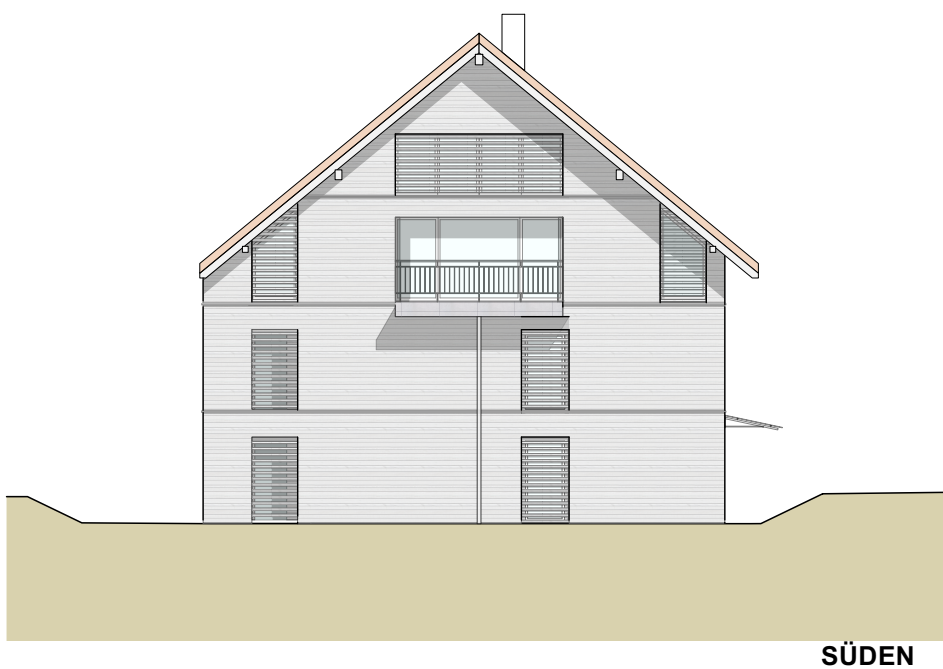
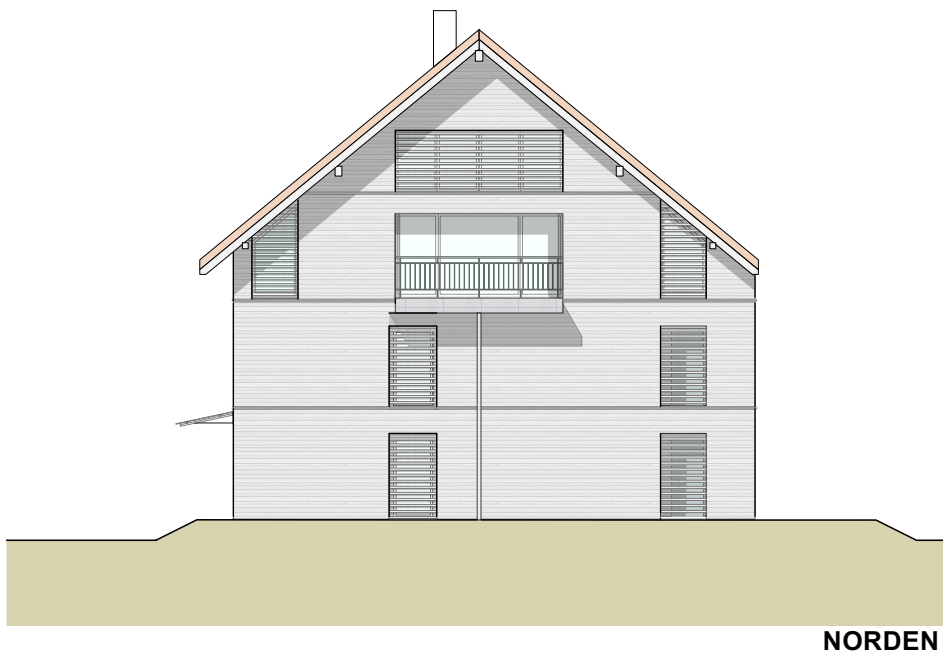
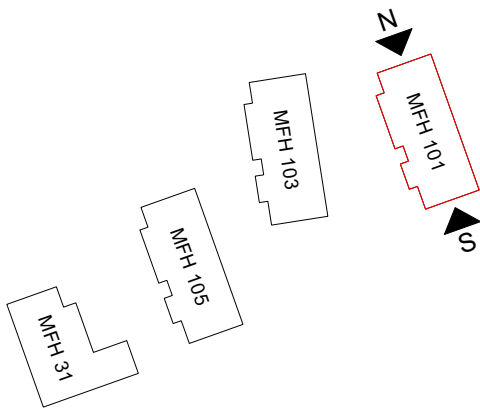
WESTEN



MASSTAB 1:200

MEHRFAMILIENHAUS  
ZILMATTSTRASSE 101  
3255 RAPPERSWIL (BE)

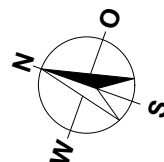
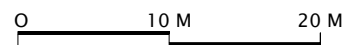
HAUS 101  
FASSADEN



MASSTAB 1:200

MEHRFAMILIENHÄUSER  
HAUPTSTRASSE 31  
ZILMATTSTRASSE 101, 103 UND 105  
3255 RAPPERSWIL (BE)

SITUATION / UNTERGESCHOSS / ESTH



MASSSTAB 1:500