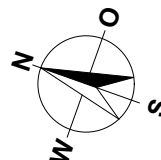
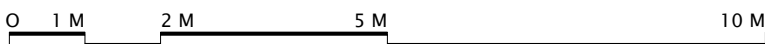
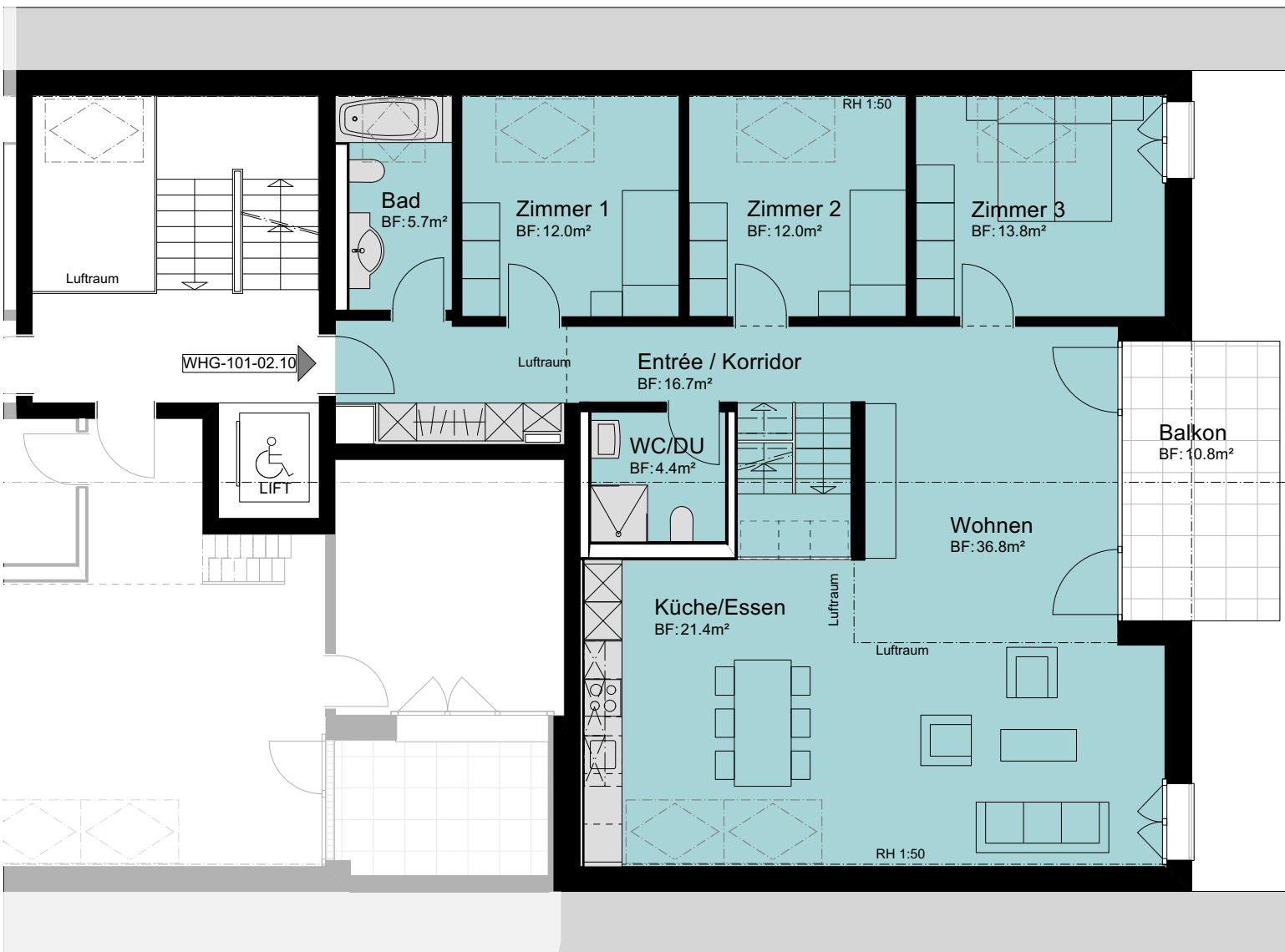
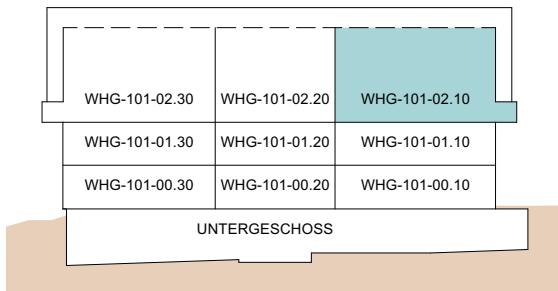


**MEHRFAMILIENHAUS
ZILMATTSTRASSE 101
3255 RAPPERSWIL (BE)
4.5 ZIMMER**

WOHNUNG: WHG-101-02.10, DG
KELLER: 16.0 m²
BALKON: 11.0 m²
NETTOWOHNFLÄCHE DG: 123.0 m²
NETTOWOHNFLÄCHE GALERIE: 35.5 m²
NETTOWOHNFLÄCHE TOTAL: 158.5 m²

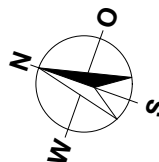
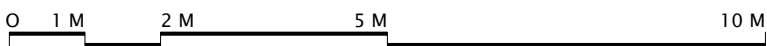
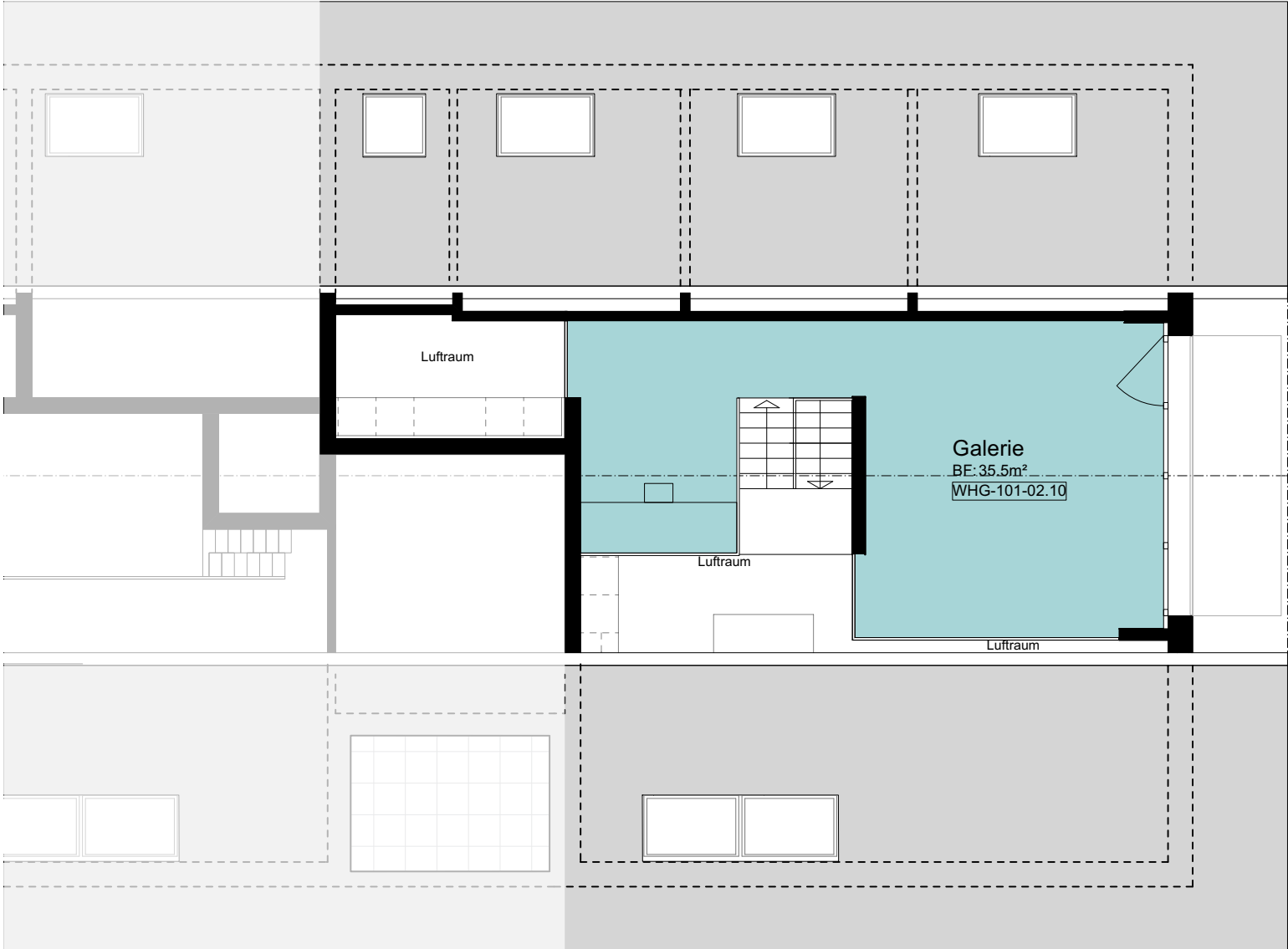


MASSTAB 1:100

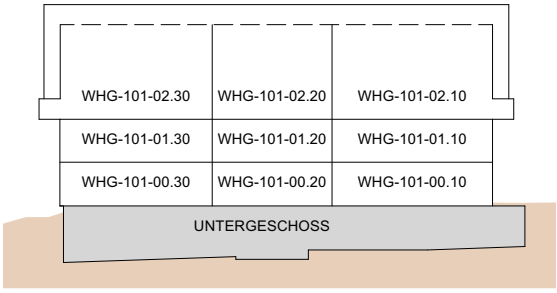


MEHRFAMILIENHAUS
 ZILMATTSTRASSE 101
 3255 RAPPERSWIL (BE)
 4.5 ZIMMER

WOHNUNG: WHG-101-02.10, Galerie
 KELLER: 16.0 m²
 BALKON: 11.0 m²
 NETTOWOHNFLÄCHE DG: 123.0 m²
 NETTOWOHNFLÄCHE GALERIE: 35.5 m²
 NETTOWOHNFLÄCHE TOTAL: 158.5 m²

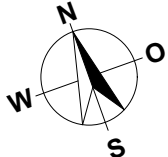
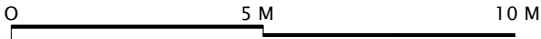
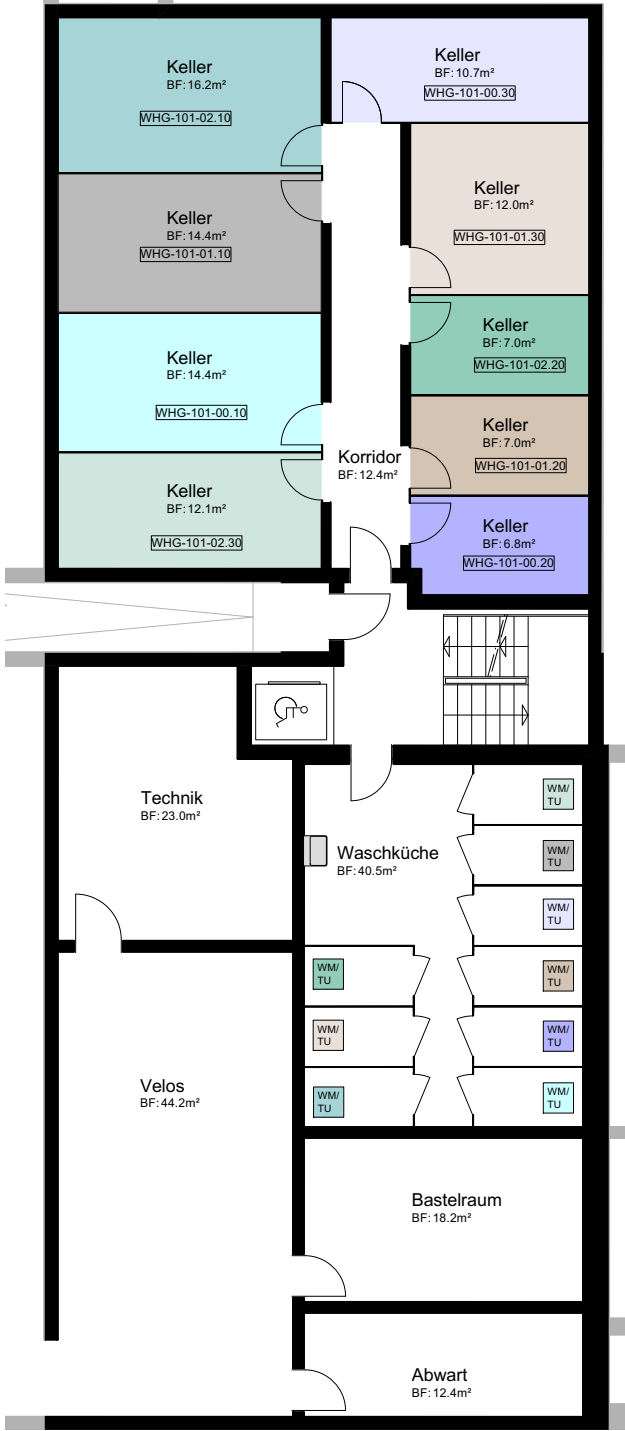


MASSTAB 1:100



MEHRFAMILIENHAUS
ZILMATTSTRASSE 101
3255 RAPPERSWIL (BE)

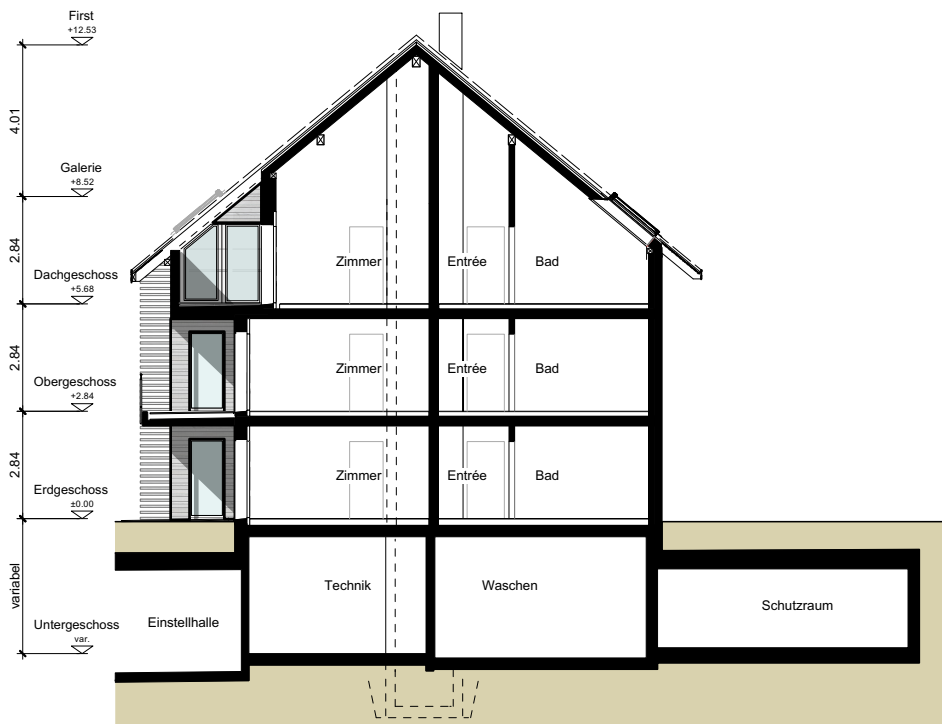
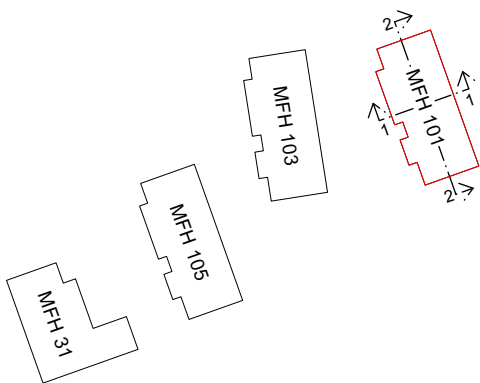
HAUS 101
UNTERGESCHOSS



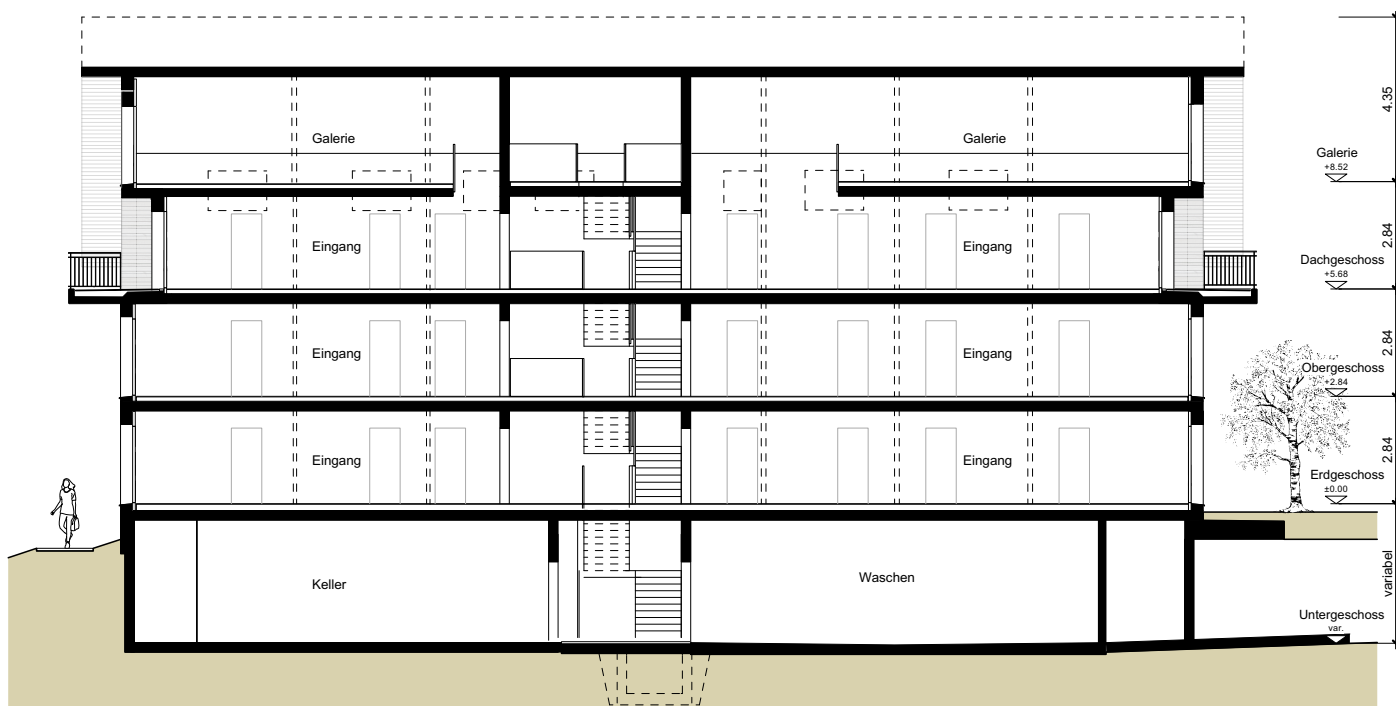
MASSTAB 1:150

MEHRFAMILIENHAUS
ZILMATTSTRASSE 101
3255 RAPPERSWIL (BE)

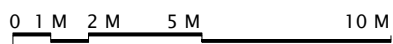
HAUS 101
SCHNITTE



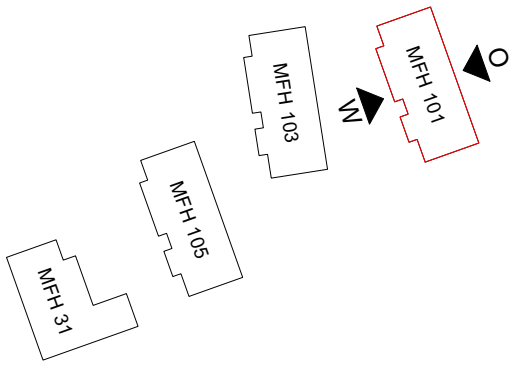
SCHNITT 1-1



SCHNITT 2-2



MASSTAB 1:200



MEHRFAMILIENHAUS
 ZILMATTSTRASSE 101
 3255 RAPPERSWIL (BE)

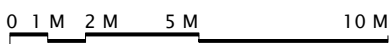
HAUS 101
 FASSADEN



OSTEN



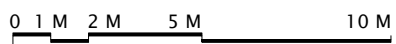
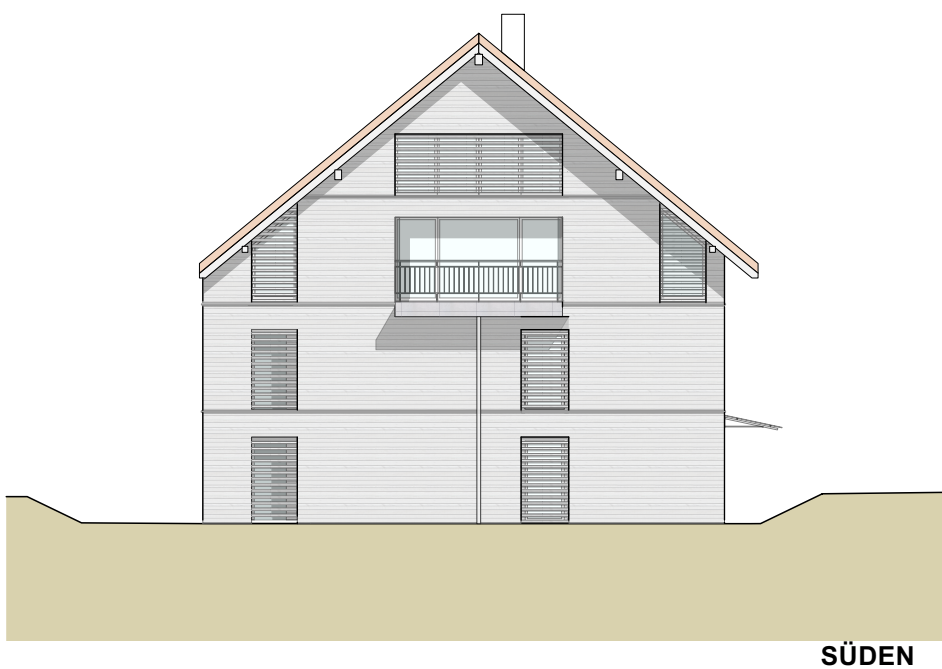
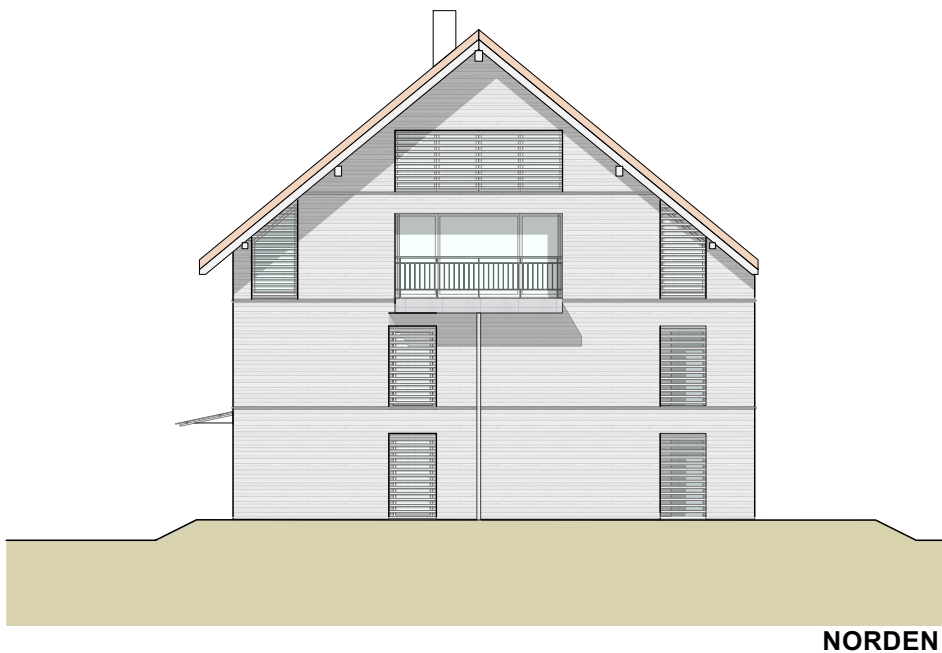
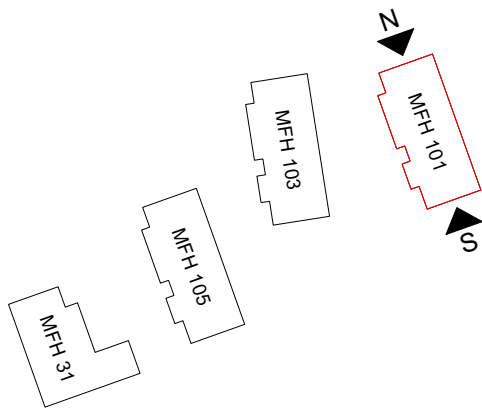
WESTEN



MASSTAB 1:200

MEHRFAMILIENHAUS
ZILMATTSTRASSE 101
3255 RAPPERSWIL (BE)

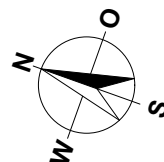
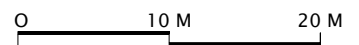
HAUS 101
FASSADEN



MASSTAB 1:200

MEHRFAMILIENHÄUSER
HAUPTSTRASSE 31
ZILMATTSTRASSE 101, 103 UND 105
3255 RAPPERSWIL (BE)

SITUATION / UNTERGESCHOSS / ESTH



MASSSTAB 1:500