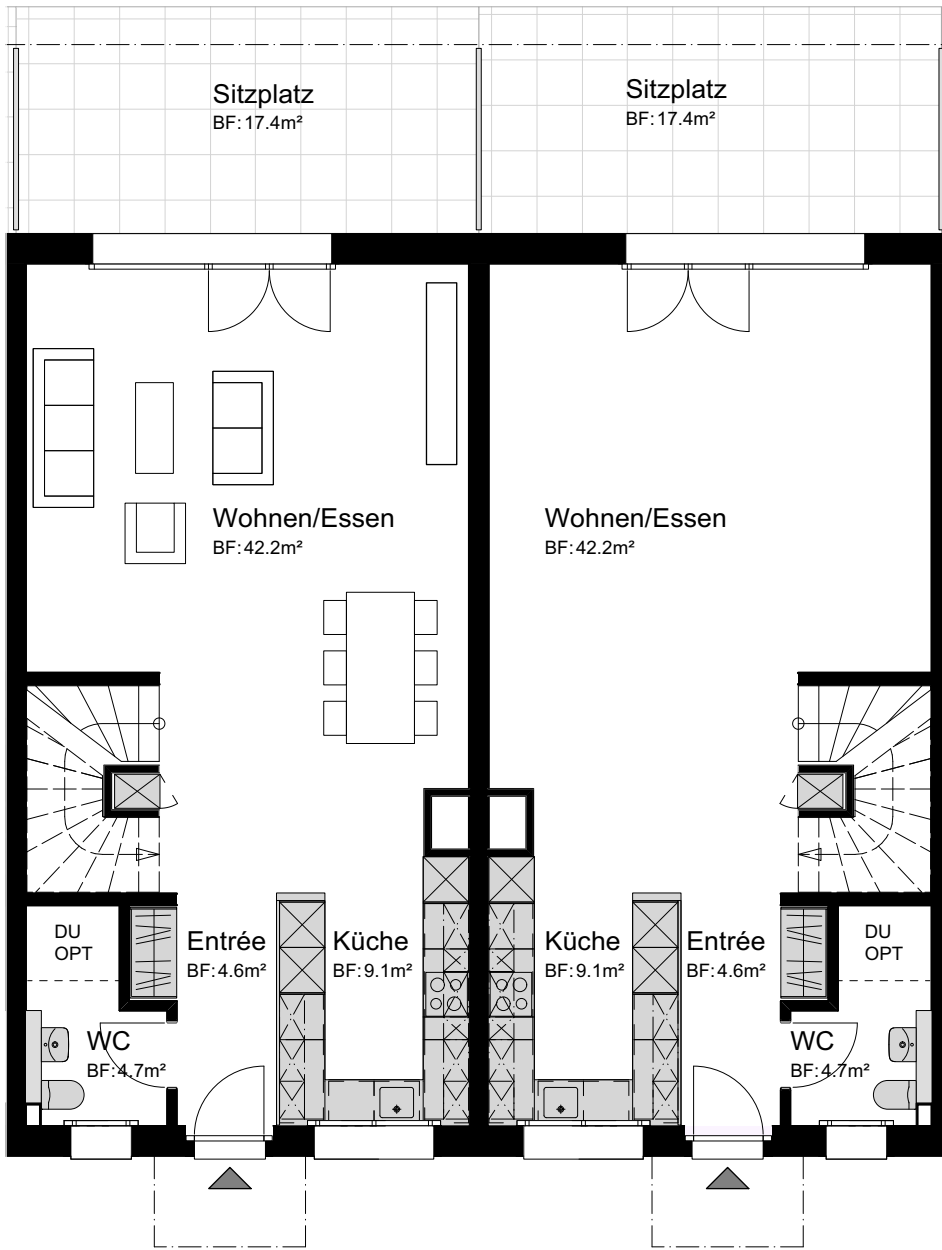
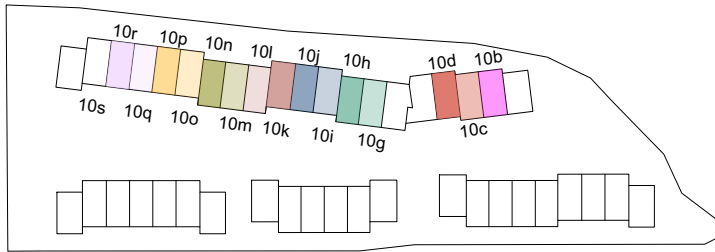


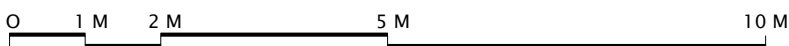
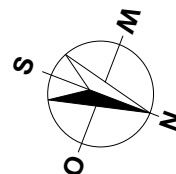
ÜBERBAUUNG  
WANNERSMATT  
3250 LYSS

ERDGESCHOSS  
REFH 10b bis 10d  
REFH 10g bis 10s  
Typ B



REFH 10r	REFH 10i
REFH 10p	REFH 10g
REFH 10m	REFH 10d
REFH 10k	REFH 10b

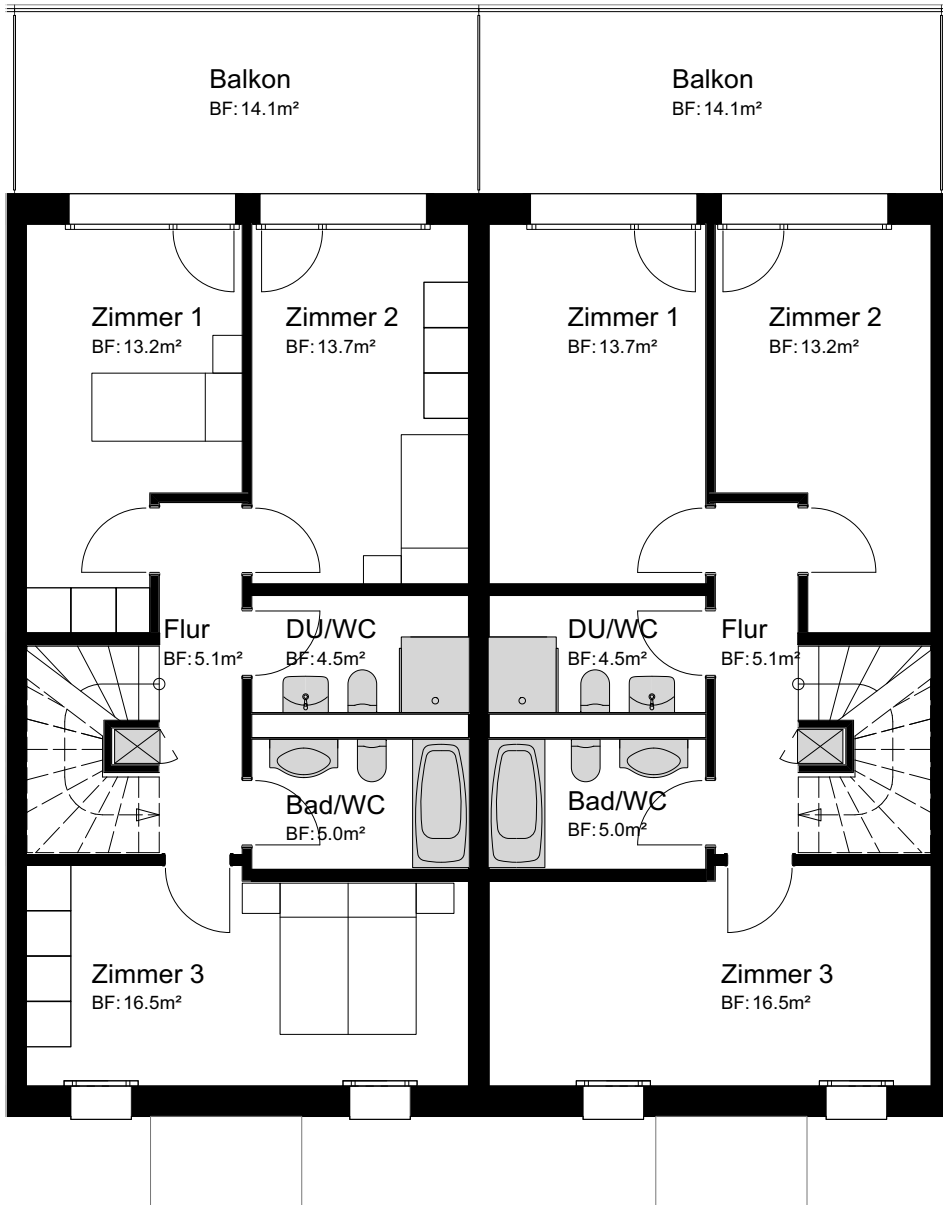
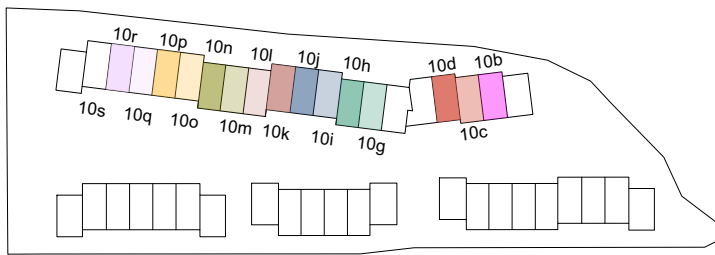
REFH 10q	REFH 10l
REFH 10s	REFH 10j
REFH 10o	REFH 10h
REFH 10n	REFH 10c



MASSSTAB 1:100

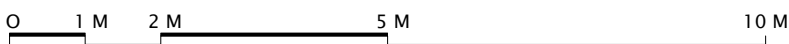
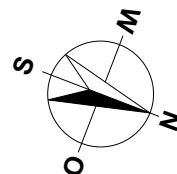
ÜBERBAUUNG  
WANNERSMATT  
3250 LYSS

OBERGESCHOSS  
REFH 10b bis 10d  
REFH 10g bis 10s  
Typ B



REFH 10r	REFH 10i
REFH 10p	REFH 10g
REFH 10m	REFH 10d
REFH 10k	REFH 10b

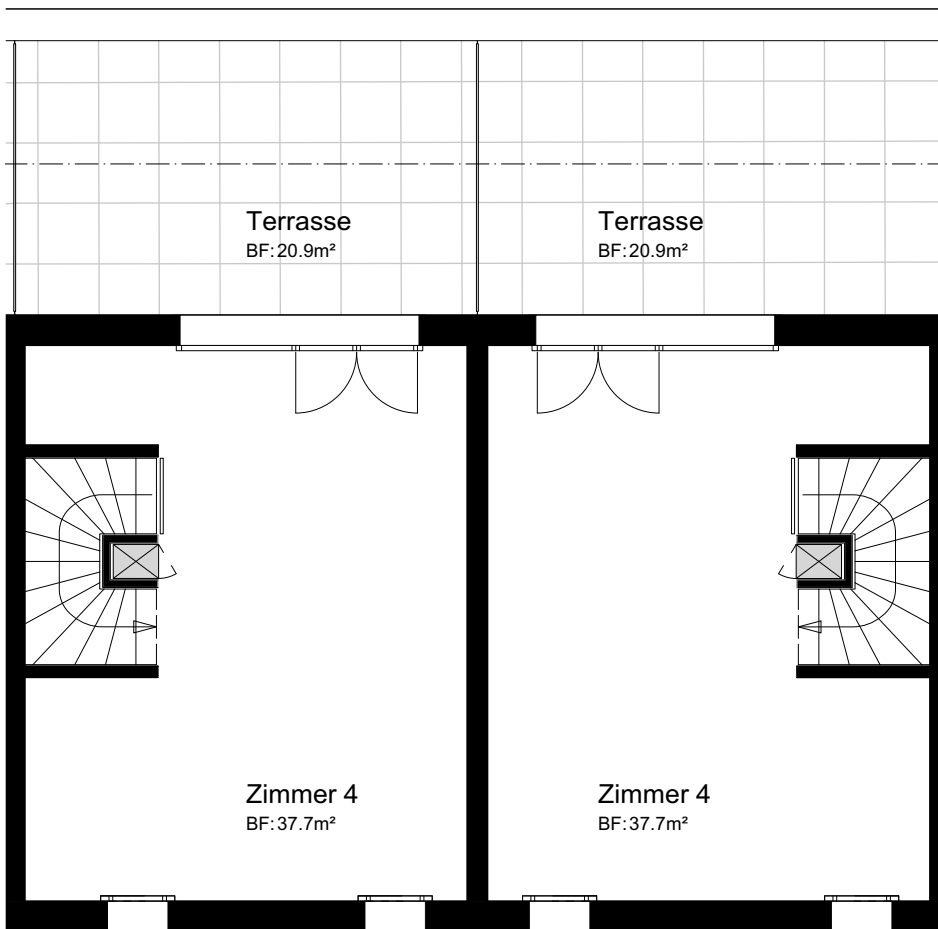
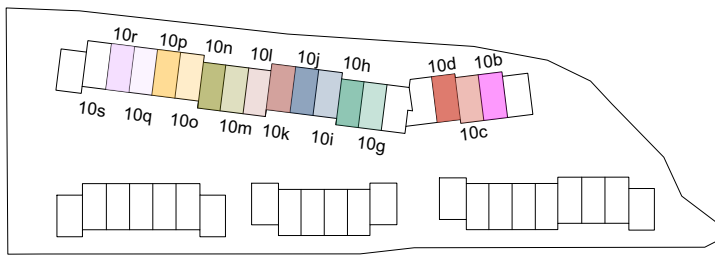
REFH 10q	REFH 10l
REFH 10s	REFH 10j
REFH 10o	REFH 10h
REFH 10n	REFH 10c



MASSSTAB 1:100

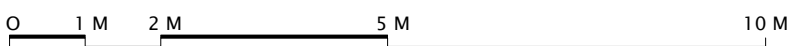
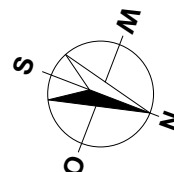
ÜBERBAUUNG  
WANNERSMATT  
3250 LYSS

ATTIKAGESCHOSS  
REFH 10b bis 10d  
REFH 10g bis 10s  
Typ B



REFH 10r	REFH 10i
REFH 10p	REFH 10g
REFH 10m	REFH 10d
REFH 10k	REFH 10b

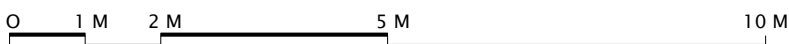
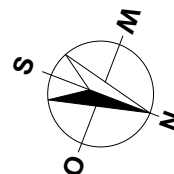
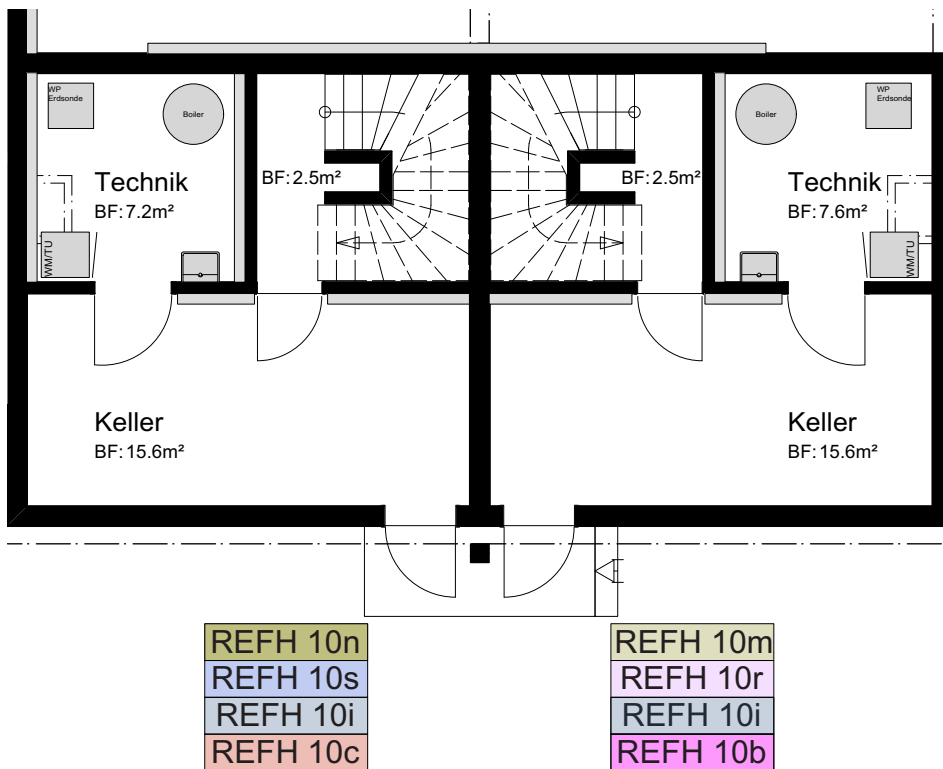
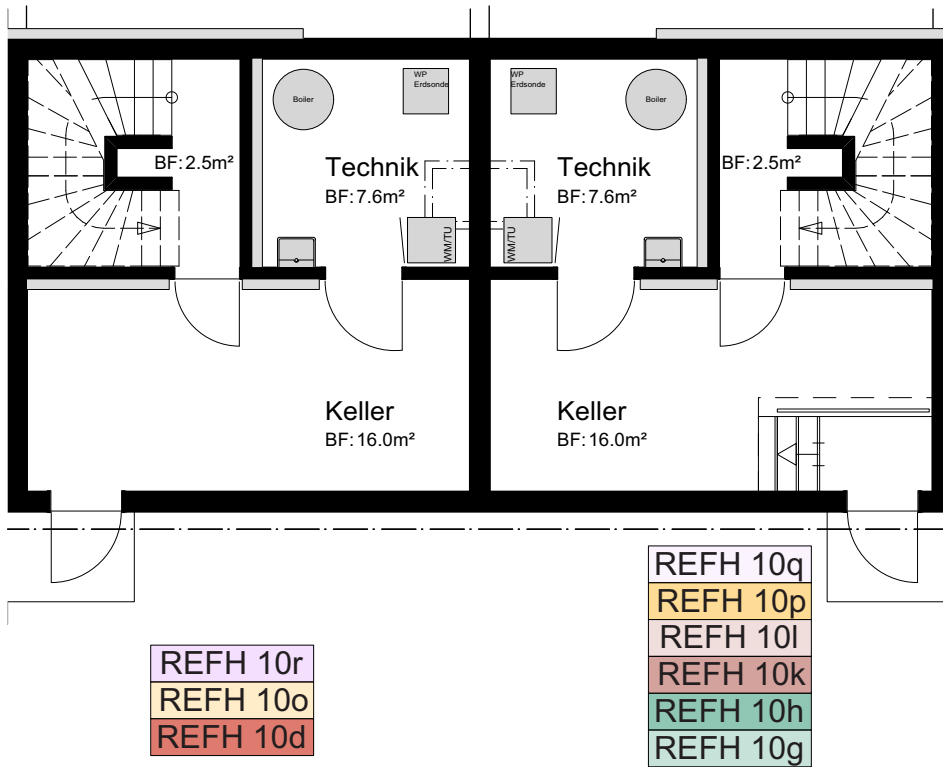
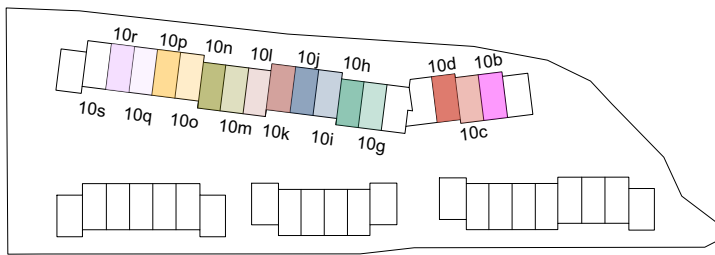
REFH 10q	REFH 10l
REFH 10s	REFH 10j
REFH 10o	REFH 10h
REFH 10n	REFH 10c



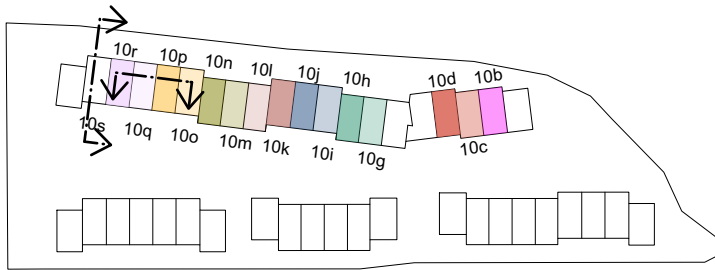
MASSSTAB 1:100

ÜBERBAUUNG  
WANNERSMATT  
3250 LYSS

UNTERGESCHOSS  
REFH 10b bis 10d  
REFH 10g bis 10s  
Typ B

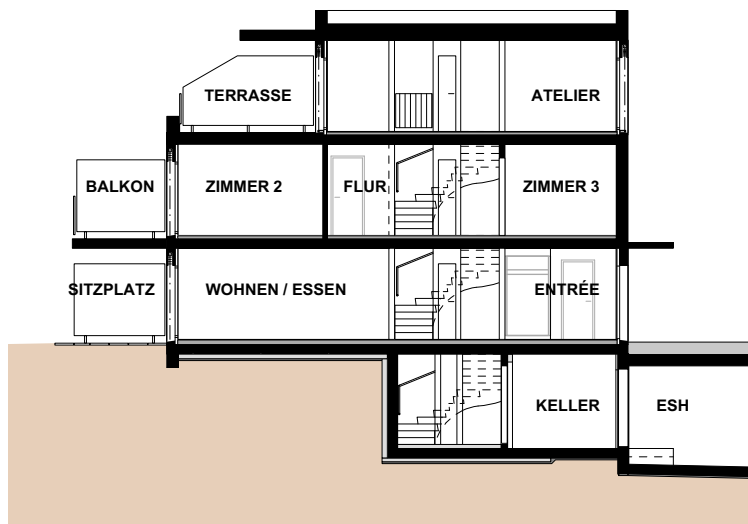
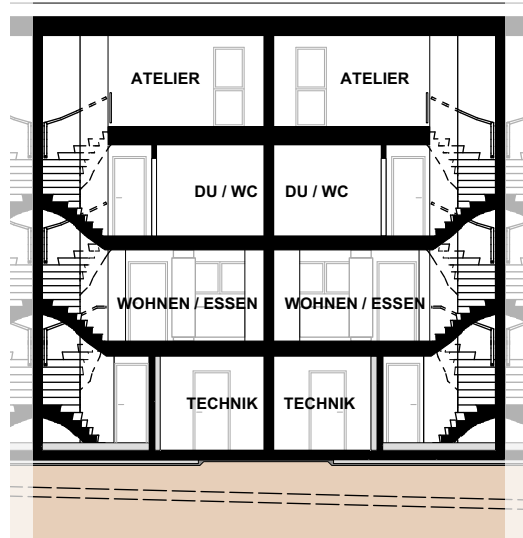


MASSSTAB 1:100



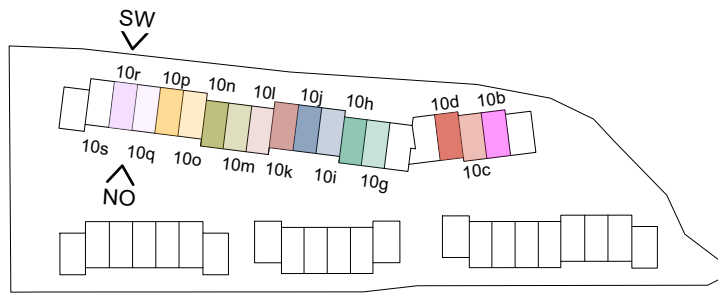
ÜBERBAUUNG  
WANNERSMATT  
3250 LYSS

SCHEMASCHNITTE  
REFH 10b bis 10d  
REFH 10g bis 10s  
Typ B



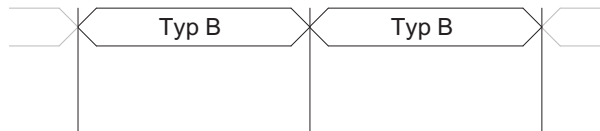
0 1 M 2 M 5 M 10 M

MASSSTAB 1:200

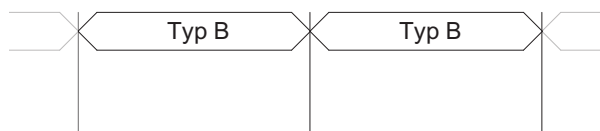


ÜBERBAUUNG  
WANNERSMATT  
3250 LYSS

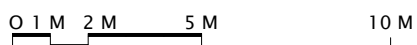
Fassaden  
**REFH 10b bis 10d**  
**REFH 10g bis 10s**  
**Typ B**



NORDOST



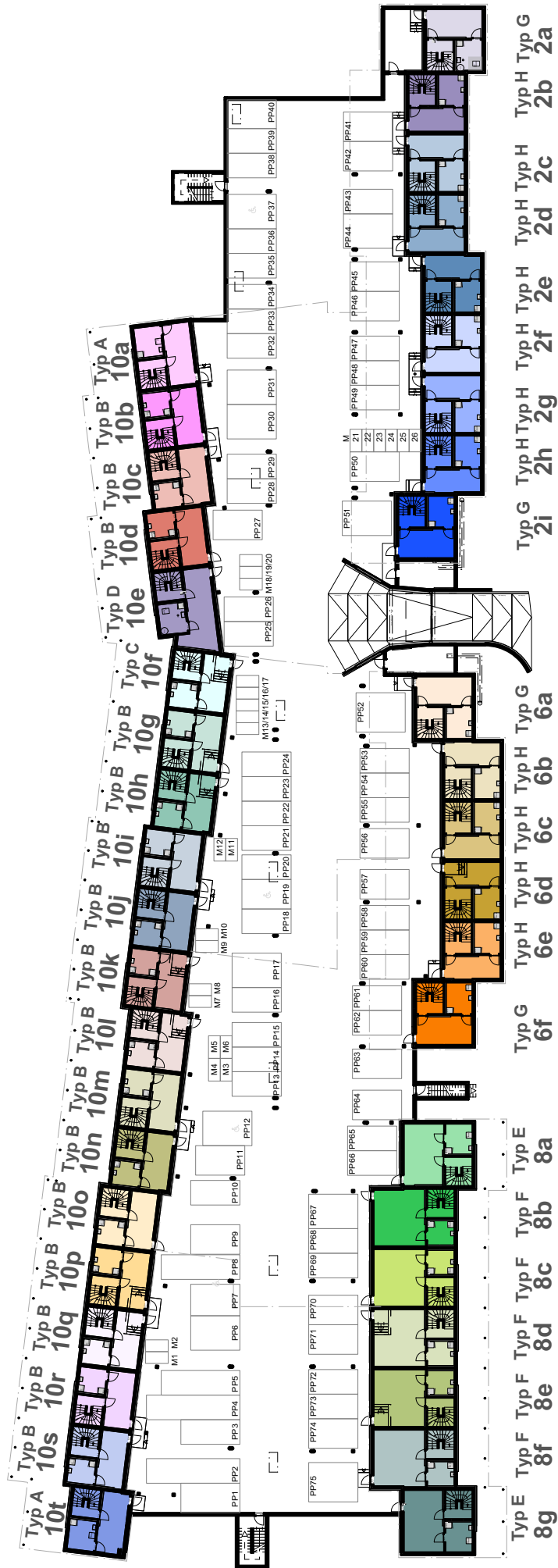
SÜDWEST



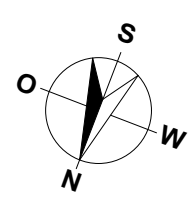
MASSSTAB 1:200

ÜBERBAUUNG  
WANNERSMATT  
3250 LYSS

Übersichtsplan  
Einstellhalle



Typ A 10s Typ B 10r Typ B 10q Typ B 10p Typ B 10o Typ B 10n Typ B 10m Typ B 10l Typ B 10k Typ B 10j Typ B 10i Typ B 10h Typ B 10g Typ B 10f Typ B 10e Typ B 10d Typ B 10c Typ B 10b Typ B 10a  
 Typ A 10t  
 Typ B 10s  
 Typ B 10r  
 Typ B 10q  
 Typ B 10p  
 Typ B 10o  
 Typ B 10n  
 Typ B 10m  
 Typ B 10l  
 Typ B 10k  
 Typ B 10j  
 Typ B 10i  
 Typ B 10h  
 Typ B 10g  
 Typ B 10f  
 Typ B 10e  
 Typ B 10d  
 Typ B 10c  
 Typ B 10b  
 Typ B 10a  
 Typ D 10e  
 Typ C 10f  
 Typ A 10s  
 Typ B 10r  
 Typ B 10q  
 Typ B 10p  
 Typ B 10o  
 Typ B 10n  
 Typ B 10m  
 Typ B 10l  
 Typ B 10k  
 Typ B 10j  
 Typ B 10i  
 Typ B 10h  
 Typ B 10g  
 Typ B 10f  
 Typ B 10e  
 Typ B 10d  
 Typ B 10c  
 Typ B 10b  
 Typ B 10a  
 Typ D 10e  
 Typ C 10f  
 Typ G 6f  
 Typ H 6e  
 Typ H 6d  
 Typ H 6c  
 Typ H 6b  
 Typ G 6a  
 Typ H 2i  
 Typ H 2h  
 Typ H 2g  
 Typ H 2f  
 Typ H 2e  
 Typ H 2d  
 Typ H 2c  
 Typ H 2b  
 Typ H 2a



MASSSTAB 1:600

